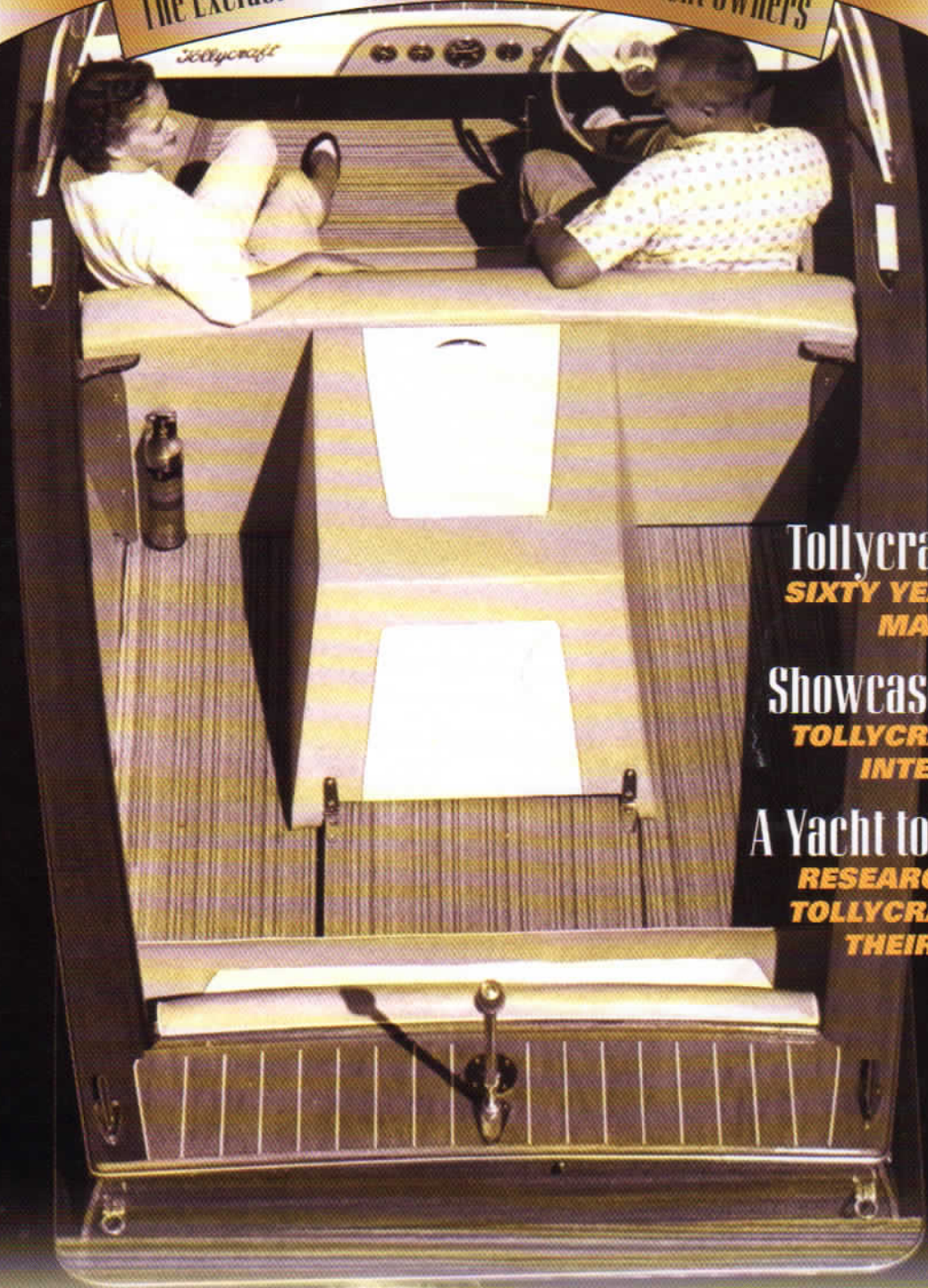


Tollycraft

1936

60th Anniversary Edition
The Exclusive Magazine for Tollycraft Yacht Owners

1996



Tollycraft Yachts
SIXTY YEARS IN THE
MAKING

Showcase Spotlight
TOLLYCRAFT'S NEW
INTERIORS

A Yacht to Appreciate
RESEARCH SHOWS
TOLLYCRAFTS HOLD
THEIR VALUE

YACHT SALES INTERNATIONAL



TOLLYCRAFT 48'
COCKPIT MOTOR YACHT



TOLLYCRAFT'S 57'
WALKAROUND



TOLLYCRAFT 65'
PILOTHOUSE MOTOR YACHT



TOLLYCRAFT 80'
PILOTHOUSE MOTOR YACHT

EXCEPTIONAL SERVICE.

Finding the right yacht for the right person is our ultimate goal at Yacht Sales International. Our centrally located headquarters overlooking Seattle's Lake Union is renowned for bringing the highest level of professional expertise and service to our valued customers.

Exceptional service is a YSI trade mark. Our commitment to excellence is reflected in our wide selection of meticulously maintained brokerage yachts. Our sales staff embodies the most professional people in the marine industry, dedicated to making your yacht purchase and ownership pleasurable. With a network of offices and affiliate dealers, we offer you an unparalleled opportunity to choose the best new or previously-owned luxury yacht to fit your boating lifestyle.

The most comfortable motor yacht you can go to sea in is a

Tollycraft. YSI represents the complete line of Tollycraft yachts, including the 57-foot WalkAround and the 80-foot Pilothouse Motor yacht.

Tollycraft's 57' is the first of the new generation of ABS Certified production yachts. Features include a large galley and dinette, and extended swim platform and a 125-square foot cockpit for fishing.

The new 80' Tollycraft is the first in the "Champagne Series" of large luxury yachts, soon to include an 88' and a 92'. The 80' is specifically designed for owners to navigate by themselves with an eye on simple operations and low annual maintenance, yet easily divided off for a crew if desired.

To insure an enjoyable yachting experience for our customers, YSI represents only the finest luxury yachts.

1220 Westlake Avenue North
Seattle, Washington USA
206/282-0052 • fax:206/283-2297

Tollycraft
Yachts

Old Traditions. New Standards.

Affiliate Dealer:
Oregon Yacht Sales, Portland • 503/285-5586
Offices also in:
Miami • Pompano Beach

Sixty Years in

We manufacture
**SASH-WINDOWS & FRAMES
KITCHEN CABINETS - STORE FIXTURES
DOORS AND DETAIL MILLWORK
BOATS**

Original Tollycraft employees stand in front of the new building built in 1952. From left to right; Clearance Brating, Les Baker, Dale Langhorst, R.M. "Tolly" Tollefson, and Lloyd Marsh.



the Making

Tollycraft Yachts celebrates its 60 years of boat building excellence and a history dedicated to quality and customer satisfaction.

*On the cover:
17-foot Inboard Plywood Runabout with fiberglass overlay, built in the late 1950s.*

NINETEEN NINETY-SIX MARKS A MAJOR MILESTONE AT TOLLYCRAFT YACHTS AS WE LOOK BACK ON A 60-YEAR TRADITION OF EXCELLENCE AND INNOVATION.

From the company's humble beginnings in 1936, when R.M. Tollefson launched his first wooden cruiser, Tollycraft has maintained a commitment to manufacturing and selling high quality, cruising motor yachts. "Listen to your customers, give them what they want and don't compromise your standards," Tollefson often said. ▶

This 17-foot Inboard Runabout—plywood with fiberglass overlay—was built in the late 1950s.





R.M. "Tolly" Tollefson, 1972

As a young man, Tollefson gained an appreciation for the fine wood runabouts that graced the waters of Crater Lake near his Medford, Oregon home. He retained his fondness for the nautical life while later operating a small lumber company in the early 1930s in Kelso, Washington. So much so, that he started producing several custom wood yachts for friends and himself. The first boat ever built was a 17-foot runabout with a Ford Model T direct drive engine.

When his lumber mill burned down, Tollefson turned his attention solely to his first love—building yachts. With a dedicated group of skilled woodworkers, Tollefson launched a complete line of wooden cruisers. During the next several years, "Tolly" Tollefson developed a close personal relationship with noted naval architect Ed Monk, Sr., and later with his son, R.E. "Ed" Monk, Jr. It was a perfect collaboration, the Monk team designing and engineering Tollycraft boats from hand-sketched plans furnished by Tollefson.

In 1952, Tollycraft started producing plywood boats up to 23 feet, utilizing fiberglass overlays. This innovative use of "plycore" placed Tollycraft on the cutting edge of the boat building industry, and by 1959, the company was building pleasureboats as large as 50 feet.

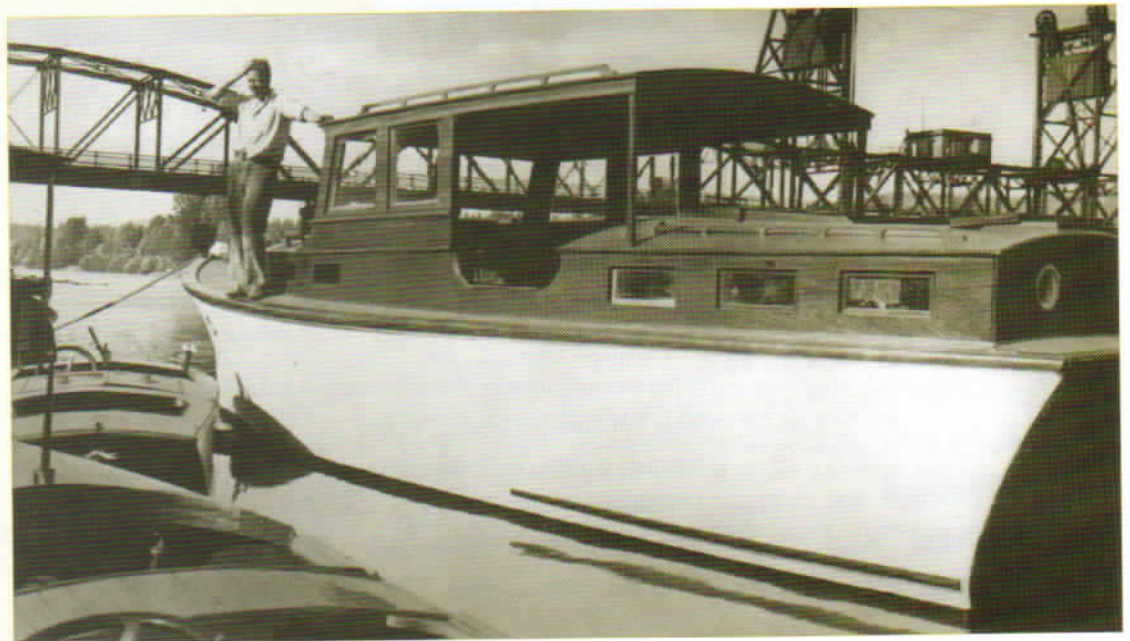
The boat builder began production of 16' and 28' molded fiberglass boats in 1963. Eventually, models were made available in 30', 34', 37', 40', 43', 48' and 61' lengths. Throughout its history, Tollycraft continued to introduce innovations into the pleasure boat market. The advent of the transom step and door, two-tone striping, unitized fiberglass construction and the Quadra-Lift™ hull were the type of progressive steps that made Tollycraft a \$20-million-a-year business with 250 employees by the 1980s.



23-foot Plywood Express, 1958.

"Tolly" stands on his own personal 36-foot wooden boat he built for himself in 1935.

The boat was constructed using 40-foot long clear-lumber planking and had varnished mahogany cabins.



In 1987, after being responsible for nearly 6,500 boats being built and distributed worldwide, Tollefson decided it was time to take a more relaxed role in the marine industry. Tolly sold the company he founded and directed for more than 50 years.

Tollycraft maintains Tollefson's commitment to excellence and innovation to this day. The company's motto "Old Traditions. New Standards." truly reflects Tollycraft's direction. They are setting new standards of excellence in the yacht building industry while maintaining a 60-year tradition of quality and integrity.

Today, the company manufactures five models, from the 45' Cockpit Motor Yacht to the 65' Pilothouse Motor Yacht, ranging in price from \$437,000 to \$1,480,000. Tollycraft also has several models in developmental stages, including the 50' Pilothouse Motor Yacht, the 74' Pilothouse Motor Yacht and the 80' Pilothouse Motor Yacht, ranging from \$750,000 to \$4,000,000.

Tollycraft's appeal to experienced boaters looking for seakindliness and quality construction is reaching out of its traditional northwest cruising grounds to the midwest and eastern parts of the country. There is now an extensive dealer network set up in those areas.

The company is currently undergoing a \$1.5 million expansion and renovation designed to support its position as the premier Northwest builder of quality yachts. Also planned is a 60,000 square foot plant on 3.5 acres on the Columbia River which will eventually employ 100 local craftsmen in the production of the 80 to 92-foot "Champagne Series" of yachts.

As Tollycraft enters its sixth decade as the premiere builder of quality yachts, they would like to thank Tollycraft owners; past, present and future, for their confidence in Tollycraft — the finest seagoing yacht you can own.

24-foot Plywood Express with fiberglass top built in the late 1950s.

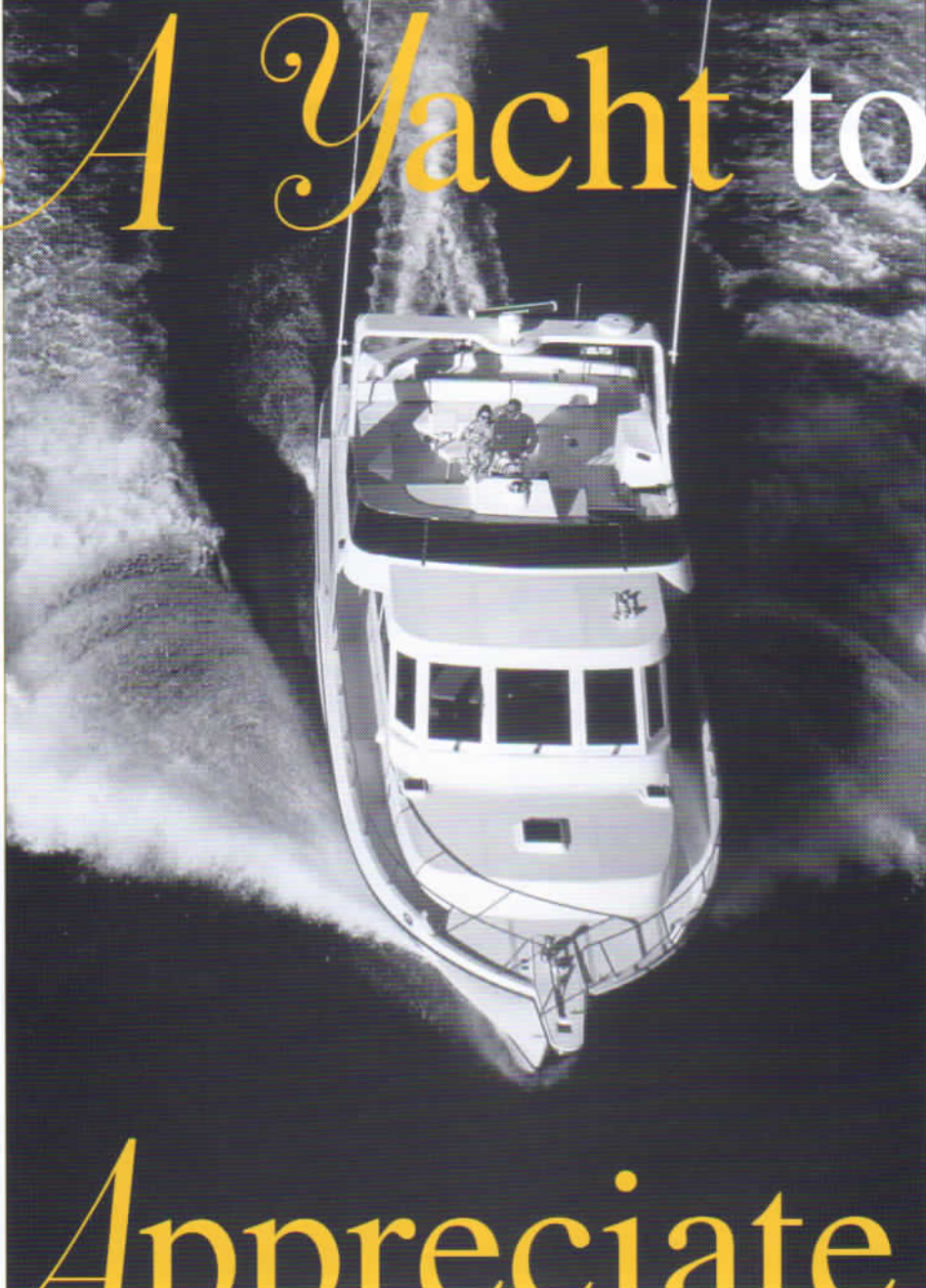


R.M. "Tolly" Tollefson, (second from left); and brother L. A. Tollefson, (third from left); Sales Manager for Tollycraft, stand with Tollycraft dealers and business associates at the Seattle Boat Show in the late 1960s.



L.A. Tollefson (Tolly's brother) poses with a model at a boat show in the late 1950s.

A Yacht to Appreciate



Tollycrafts hold their value.

While yacht owners rarely see their purchase as an investment, Tollycraft represents one of the few yacht lines that can actually appreciate in value. An intensive study of used boat prices and interviews with yacht brokers shows Tollycrafts consistently retain 60% to 93% of their original retail value.

The research shows what many brokers will tell you: that Tollycrafts hold their value better than any other yacht. In many cases, Tollycrafts actually sell several years later for more than their original cost.

"As an investment, it's better than the stock market," claims Jack Gallus of Oregon Yacht Sales, the affiliate Tollycraft dealer in Portland, Oregon. Gallus has made buying and selling Tollycrafts a profitable hobby over the last 20 years. "There's nothing on the west coast market that's as good in

terms of resale value," Gallus said, speaking from the perspective of overseeing a firm that represents more than 200 brokerage boats.

Gallus cites current brokerage prices to back his claims. The 1977 26' Tollycraft Sedan, for example, now sells close to its original \$25,000 price tag, on the low end, and for up to \$35,000 on the high end. A 30' 1977 Tollycraft that originally sold for \$43,000 now brings anywhere from \$35,000 to \$45,000.

In 1985, Gallus paid \$215,000 for a new 43' Tollycraft. He turned around and sold it for \$229,000 in 1986, a 6.5% appreciation hike. "Today, 11 years later, that same 1985 43' Tollycraft goes for \$195,000 to \$225,000," explains Gallus. A 1991 40' Tollycraft Sportfisher that Gallus bought new for \$265,000 sold later for \$295,000. "Now the market is at \$265,000 on the low end to \$385,000 at the high end," Gallus said.

This analysis of the market is shared by Chuck Hovey of Chuck Hovey Yachts in Newport Beach, California. "The resale value for a Tollycraft is unbelievable," Hovey states. He cites an example of a 1989 61' Tollycraft that he recently brokered for a "gentleman who decided he wanted to purchase a larger yacht." The yacht sold in the "high eights" which was more than his original purchase price in 1993. "He seemed very pleased," Hovey observed.

A longtime broker and dealer in the Newport area, Hovey says the 61s, which were introduced in 1987, consistently sell at a price equal to or higher than their original purchase cost.

A review of prices printed for ten different popular yacht lines in the 1994 Winter/Spring BUC Used Boat Price Guide further supports Tollycraft's reputation for holding values. The BUC Guide, with price listings for over 300,000 used pleasure boats from 15,000 brokerages, is the most widely used guide in the industry.

The review covers the applicable years from 1980 to 1994 for various models of the 40', 44', 45' and 48' Tollycrafts. In almost every case, Tollycraft led the pack in terms of holding its value. For example, a 1990 44' Tollycraft with twin diesels shows a low price of \$212,000 and a high of \$233,000. The average of \$222,500 places the 44' at 86% of its \$260,000 original selling price. The nearest competitor, a 45' east coast yacht, retained 81% of its value. The remainder of 1990 yachts compared in this study retained just over half of their original retail values.

Similar results are found when comparing the values of the 1985 48' Cockpit Motor Yacht and the 1987 61' Tollycraft Motor Yacht with other yachts. The 48' holds 83% of its value compared to only 60% for its nearest east coast competitor and the 61' maintains 93% of its original value compared to 91% for its nearest competitor.

A number of factors influence the selling price of a used yacht. These factors include local competitive conditions, the actual physical condition of the hull, engine and equipment on the yacht, and weather conditions where the boat is located.

The fact that most Tollycrafts are located in the northwest also improves their value. Northwest weather conditions discourage year-round use and prevent the kind of sun damage to gelcoat that often occurs in the warmer climates of Florida and Southern California. For this reason, BUC recommends adding 15% to the cost of powerboats located in the northwest.

Tollycraft's desirability on the boating market revolves around a proven reputation for quality construction and seaworthiness. Tollycrafts are well known for their double chine QuadraLift™ hulls which provide stability, speed and effortless planing. A 15-year transferable hull warranty—the most comprehensive warranty in the industry—provides owners with further confidence.

"Experienced boaters who really want to cruise long range will choose a Tollycraft," says Chuck Hovey. Quality construction, solid engineering and excellent sea capabilities make Tollycraft "a yacht that is designed to cruise up and down the coast," Hovey adds.

Jack Gallus agrees with Hovey's assessment. He also credits the yacht's "classic" style and strong backing from local Tollycraft clubs for its continued popularity. "Everybody wants to be a Tollycraft owner," he said "because they know it's a quality yacht."

The limited production of many Tollycraft models also plays a role in its value retention, according to brokers. Scarcity, combined with a reputation for quality, are the primary reasons Tollycraft enjoys high resale value on the east coast, according to broker Mark Dekema of Yacht Sales International in Miami.

"There's really no comparison in terms of seaworthiness and stability," Dekema says, adding that Tollycraft is gaining increasing popularity among east coast boaters. "They are proving their love for Tollycraft by keeping their yachts longer than the 2 to 3 year average, and by paying premium prices for pre-owned Tollycrafts", Dekema explains. He cites as an example a 1992 57' Tollycraft Motor Yacht that just recently sold for close to its original price. Yacht Sales International is also brokering a 1990 44' Tolly and 1993 55' Tolly for close to the original retail cost.

"It's a good quality yacht," said Dekema. "Tollycraft definitely places among the top three production yachts on the east coast."

Oregon Yachts Sales



Tollycraft Yachts
New & Brokerage
15'-150'

Business: (503) 629-0717

**Residence/FAX:
(503) 690-0824**

Cellular (503) 799-5028

Pager: (503) 795-5147

**864 NE Tomahawk Isle Dr.
Suite 103
Portland, OR 97217**

Dealer Focus

On Team Tollycraft



Aboard the new 57' Tollycraft from left to right; Lauran Lee, Glenn Musselwhite and Andy Harwell.

Team Tollycraft is kicking off its effort to service yacht buyers and owners in the Gulf states of Florida, Louisiana, Alabama and Texas. Based in Naples, Florida, the brand new Tollycraft dealer is committed to "taking care of future and current Tollycraft owners," says team member Lauran Lee. "We will give them the service they deserve."

The four-person Team Tollycraft includes Andy Harwell, Glenn Musselwhite and Lauran Lee. The team is geared up to represent both the full line of new Tollycrafts 45' and above, as well as pre-owned Tollycrafts.

Lee said Tollycraft's shallow drafts—ranging from 36" on the 40'

Sport Sedan to 48" on the 65' Pilothouse Motor Yacht—make the yachts ideal for cruising the shallow waters of the Gulf and Bahamas. "Tollycraft is being very well received here," Lee commented. Lee said the team is "getting a lot of positive feedback" from current and potential Tollycraft owners regarding the quality and seaworthiness of the yacht.

Team Tollycraft is located at the 60-slip Turners Marina, an ideal midpoint for Gulf cruisers. The facility has a full service department, 60-ton and 20-ton lifts, fuel and auxiliary marine services.

For information, contact Team Tollycraft at 895 10th Street South, Naples, Florida 33940, (941) 262-5544 or fax (941) 262-6693.

Yacht Deliveries

Since 1965.

West Coast, Alaska, Mexico, Panama,
Expert Picking Weather,
Bar Crossings

Captain Mike Maurice
503/694-5267



Tollycraft Magazine brings you exclusive coverage of the designers, builders and owners of Tollycraft yachts—the world's most glorious yachts!

Reserve your personal, complimentary copy today!

Name _____

Address _____

City _____ State _____ Zip _____

Phone(s) _____

Send subscription requests to: Tollycraft Magazine
700 N. Hayden Island Dr., Suite 315
Portland, Oregon 97217

Boat Presently Owned _____

I Plan to Purchase a Boat in: 3 mos. 6 mos. 12 mos.

Interested in _____

Size _____ Price Range _____

Comments _____



Introducing

the Exclusive

Gulf Coast

Tollycraft Dealer

Sales/Full Service Yard/ 60 Ton Lift

TEAM
Tollycraft
AMERICA'S GULF COAST TOLLYCRAFT DEALER



895 Tenth Street South
Naples, Florida 33940

941-262-5544

Fax: 941-262-6693

Your East Coast Tolly Connection...



SPACIOUSNESS AND TRADITIONAL DESIGN KEYNOTE THE TOLLYCRAFT 65'. THE HUGE SUNDECK HAS A WET BAR AND SINK ADJOINING A FLYBRIDGE THAT CAN SEAT SEVEN PLUS HELMSMAN AND MATE. THERE'S A 180 SQ. FT. COCKPIT WITH DOUBLE-ENTRY DOORS LEADING INTO A SALON WITH FORMAL DINING AREA, WET BAR, ENTERTAINMENT CENTER WITH TV, VCR AND STEREO WITH CASSETTE AND CD PLAYER AND AN L-SHAPED LOUNGE. BELOW, YOU FIND A MASTER STATEROOM WITH TUB/SHOWER, QUEENSIZE BERTH, TV AND TWO HANGING WARDROBES. THE LOW PROFILE, LOW CENTER OF GRAVITY AND DOUBLE-CHINED QUADRALIFT™ HULL OFFER AS MUCH COMFORT OFFSHORE AS THE LUXURIES INSIDE.



TOLLYCRAFT'S 45' COCKPIT MOTOR YACHT IS A CLASSIC OF ITS KIND. OFFERING TOLLY'S NEW LAYOUT FORWARD, THE 45' INCLUDES QUEEN-SIZED SLEEPING QUARTERS, HEAD WITH TELEPHONE, SHOWER, LARGE GALLEY AND BIG-WINDOWED SALON, GIVING THE OWNER COMMANDING VIEWS AND EXCEPTIONAL COMFORT.



TOLLYCRAFT'S 57' WALK-AROUND IS THE FIRST OF THE NEW GENERATION OF ABS CERTIFIED PRODUCTION YACHTS. FEATURES INCLUDE A LARGE GALLEY AND DINETTE, AN EXTENDED SWIM PLATFORM AND A 125-SQUARE FOOT COCKPIT FOR FISHING.



YACHT SALES INTERNATIONAL
2 LOCATIONS TO SERVE YOU

Miami Beach
Miami Beach Marina
300 Alton Road, Suite 305
Miami Beach, FL 33137
305-534-3226

Pompano Beach
Sands Harbor Marina
101 N. Riverside Drive, Suite 206
Pompano Beach, FL 33062
305-943-7799

Showcase Spotlight



Enjoy our high-tech helm with the user-friendly electronic layout. • A complete entertainment center faces our curved sofa • Handle dock lines with ease from our roomy and convenient deckspace.

57' Walk Around

With just a glance, the new features of the Tolly Walk Around are apparent. Foremost among these is the wide deckspace that gives the boat its name and makes it much easier to handle dock lines, particularly if just one couple is running the boat. In addition to being roomy and convenient, the deck also provides a safe pathway for curious children. Another of the notable profile features is an extended swim platform which provides a comfortable boarding and docking area.

The pilothouse contains a high-tech instrument console with a user-friendly electronic layout. The galley and dinette are conveniently located on the same level with easy access to the foredeck and flybridge. A curved sofa in the salon faces a complete entertainment center and wet bar. Generous sliding windows allow in ample daylight and fresh breezes.

The master stateroom has large storage areas and the ensuite facilities have separate toilet, washroom and shower areas. Two guest cabins share the forward space and an additional head. Interior features include Avonite solid-surface countertops, woven Berber carpeting, and white ash, teak, or painted wood interiors created by Pokela Design. Themed selections include "American Traditional", "Lush Pastel", "Safari", "Manhattan Contemporary" and "Tropical Heat". The well-developed option list includes items for both comfort and convenience, but the extensive standard equipment aboard is more than enough to provide a safe and pleasant cruise.

L.O.A. (w/o pulpit)	57'0"
Beam	17'3"
Draft	3'6"
Dry Weight	58,000 lbs.
Fuel Capacity	1,200 gal.
Water Capacity	280 gal.
Power	Options, Twin 665hp to 820hp

Showcase Spot

65' Tollycraft Pilot House



You begin to understand the concept of spaciousness the moment you step on board the 65' Tollycraft Pilot House Motor Yacht.

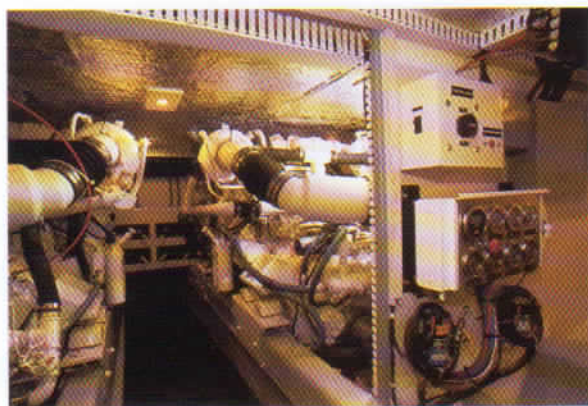
The refined Tollycraft style is evident throughout. The luxurious master stateroom features private heads with bath and shower, a queensize berth, television and two cedar-lined hanging closets. Amidships is a guest stateroom with upper and lower bunks. A forward stateroom includes queensize berth, wardrobe, dresser, lockers and head with shower.

On the main level, sliding doors lead to a large salon with plenty of room for entertaining. There's a formal dining area, L-shaped lounge, wet bar, entertainment center with television, VCR and stereo with cassette and CD player. Forward of the salon, a well-equipped galley leads to the pilothouse where a raised lounge and table, wrap-around instrument console and helm chair make cruising an absolute pleasure.

The huge sundeck topside features a dinghy davit as standard equipment as well as a wet bar and sink adjoining a flybridge with seating for seven plus helmsman and mate.

Five completely new standard interiors are available in the 65' Pilot House Motor Yacht, along with hand-finished woods of ash or teak, as well as painted interiors. Add any of the available options or specify your favorite custom equipment selection.

The result is a spacious yacht that's perfect for you.



Length (w/o pulpit) _____	65'2"
Beam _____	17'11"
Draft _____	48"
Dry Weight _____	68,000 lbs.
Fuel Capacity _____	1,170 gallons
Water Capacity _____	365 gallons
Power _____	Options, Twin 665hp to 820hp

Light House Motor Yacht



Daylight streams through double sliding doors leading to the 65' Tollycraft Pilothouse Motor Yacht's stunning salon with plenty of room for entertaining.

Everything a host needs is present.

A luxurious master stateroom features private heads with bath and shower.

Tolly's wrap-around instrument console and helm chair make cruising a pleasure.

Five completely new standard interiors are now available with ash, teak, or painted woods.



AYB

ATLANTIC
YACHT
BROKERS

Atlantic Yacht Brokers

is pleased to announce their appointment as the

Mid-Atlantic

Tollycraft
Yachts

Dealer.

804-428-9000

Norm Schaeffler Gene Meekins
932 Laskin Rd., Virginia Beach, VA 23451

IMMEDIATE DELIVERY!

Step Up to Tollycraft Quality Today



**Tollycraft 65' Pilothouse Motor Yacht
(No Waiting)**



**Tollycraft 45' Cockpit Motor Yacht
(No Waiting)**



Serving the West Coast Yachtsman for Over 30 Years.

Chuck Hovey • Brian Hovey
Rita Jacques • John Meade

Lido Yacht Anchorage, 717 Lido Park Drive, Suite A
Newport Beach, California 92663

714-675-8092

Lido Peninsula Marine Center: Fax: 714-673-1037

Steamboat Marine, Inc.

Shear^{dba}

YACHT SALES

**YOUR FLORIDA
TOLLYCRAFT
DEALER**



65' Tollycraft Pilothouse Motor Yacht



Tollycraft's 57' WalkAround



48' Tollycraft Cockpit Motor Yacht



*Introducing the New 50' Tollycraft
Pilothouse Motor Yacht—Fall 1996.*



45' Tollycraft Cockpit Motor Yacht

Motor Yacht Specialist for 18 Years.

Our New Location at:
Frenchman's Marina
2700 Donald Ross Road
Palm Beach Gardens, FL 33410

Phone: (407) 624-5285
(407) 624-2112
Fax: (407) 624-1877

See opposite page for garment descriptions and prices.



CALL TOLL FREE: 1-800-424-9272
Monday-Friday, 8am-5:30pm PST
FAX: (206) 881-5638 anytime

Sunrise Design Tollycraft Apparel
15500 NE 90th St.
Redmond, Washington 98052

Tollycraft[®]
APPAREL



SHIP TO:

DATE _____ CITY _____ STATE _____ ZIP _____
 NAME _____
 STREET ADDRESS _____
 Signature _____

PAYMENT METHOD:

Master Card Check*
 Visa Money Order*

*Payable to Sunrise Design

Expiration Date
 [] [] [] [] [] [] [] [] [] [] [] [] [] [] [] [] [] [] [] [] [] []

DESCRIPTORS:

- TRI-COLORED 1/4 ZIP PULLOVER SWEAT**, 55/45 poly cotton pique knit fleece. Contrasting panels of solid fleece surround the salt & pepper fleece body. Side seam pockets. COLORS: Salt & pepper/Navy/White. Salt & pepper/Red/White. SIZES: M-XL Retail \$54.00 (BAC Apparel).
- NYLON FLEECE LINED JACKET**, Supplex nylon shell with Durepel finish. Nylon filled sleeves. COLORS: Black with jade fleece lining. Jade with navy fleece lining. SIZES: S-XXL Retail \$89.00 XXXL and TALLS available at 10% upcharge (Pacific N.W. Sportswear).
- INTERLOCK POLO SHIRT**, 100% combed cotton interlock knit. Two button fully flussed placket. Knit collar & cuffs. Woodtone buttons & extended tail. COLORS: White, Navy, Black. SIZES: S-XXL Retail \$39.00 XXXL & TALLS available at 10% upcharge (Outer Banks).
- TWILL CAP**, 60/40 poly cotton, 6-panel construction with seamed front. COLORS: White, Navy, Black. SIZES: Adjustable. Retail \$12.00
- SALT & PEPPER CREW NECK SWEAT**, 55/45 poly cotton pique knit fleece. Contrasting tri-color rib knit on collar, cuffs and waistband. COLORS: Salt & pepper with navy/white/gray, Salt & pepper with black/white/gray, Salt & pepper with red/white/gray. SIZES: M-XXL Retail \$44.00 (BAC Apparel).
- 1/2 ZIP PULLOVER**, Pique knit fleece sweatshirt. 80/20 poly cotton. Solid color body with contrast tipping stripe on the collar, cuffs and waistband. Two in-seam pockets. COLORS: Navy/Canvas Canvas/Navy SIZES: M-XL Retail \$59.00 (BAC Apparel).
- 1/2 ZIP PULLOVER PALOMINO JACKET**, 70/20/10 cotton poly and flax. Ultra-suede lined collar and elbow patches. Two side seamed pockets. Rib cuff and bottom. COLOR: Natural. SIZES: S-XXL Retail \$89.00 (Sunrise Design).
- DENIM SHIRT**, 100% cotton. Buttondown collar and two chest pockets. Shirt tail bottom. COLOR: Bleached Blue. SIZES: S-XXL Retail \$42.00 (Sunrise Design).
- OTTOMAN CORDUROY KNIT SWEAT**, 80/20 cotton poly fleece sweatshirt. Lycra rib collar, cuffs and waistband. Horizontal rib texture. COLORS: Navy, White, Black, Sea teal. SIZES: M-XXL Retail \$29.00 (Jerzees).
- SUPER HEAVY WEIGHT COTTON T-SHIRT**, 100% cotton. Coverseamed neck and armholes. Double needle bottom hem. COLORS: White, Navy, Ash. SIZES: S-XXL Retail \$20.00 (Fruit of the Loom).
- POWER RIB HENLEY**, 100% cotton jersey. Horizontal rib texture finish. Three woodtone buttons. COLOR: White. SIZES: M-XXL Retail \$22.00 (Oneita).
- HEAVY WEIGHT COTTON DELUXE LONGSLEEVE MOCK TURTLENECK**, 100% cotton jersey. Coverseamed neck. Double needle bottom hem. COLORS: White, Navy. SIZES: M-XXL Retail \$25.00 (Anvil Knitwear).
- TRI-COLORED VERTICLE PIECED POLO**, 100% combed cotton pique knit. Cleaned finished bottom hem with side vents. Hemmed sleeves and horizontal buttons. COLOR: Navy/Red/White. SIZES: S-XXL Retail \$42.00 (Munsingwear).

STYLE #	DESCRIPTION	COLORS	S	M	L	XL	XXL	TOTAL QUANTITY	COST EACH	TOTAL AMOUNT
1. TA 101	TRI-COLORED PULLOVER	NAVY RED	—	—	—	—	—			
2. TA 102	NYLON FLEECE JACKET	JADE BLACK	—	—	—	—	—			
3. TA 103	INTERLOCK POLO	WHITE NAVY BLACK	—	—	—	—	—			
4. TA 104	TWILL CAP	WHITE NAVY BLACK	—	—	—	—	—			
5. TA 105	SALT & PEPPER CREW NECK	RED NAVY BLACK	—	—	—	—	—			
6. TA 106	PULLOVER PIQUE KNIT SWEAT SHIRT	NAVY CANVAS	—	—	—	—	—			
7. TA 107	PALOMINO JACKET	NATURAL	—	—	—	—	—			
8. TA 108	DENIM JACKET	DENIM	—	—	—	—	—			
9. TA 109	OTTOMAN CORDUROY SWEAT SHIRT	WHITE SEA TEAL NAVY BLACK	—	—	—	—	—			
10. TA 110	SUPER COTTON T-SHIRT	WHITE ASH NAVY	—	—	—	—	—			
11. TA 111	POWER RIB HENLEY	WHITE	—	—	—	—	—			
12. TA 112	MOCK TURTLE NECK	WHITE NAVY	—	—	—	—	—			
13. TA 113	TRI-COLORED POLO	AS PICTURED	—	—	—	—	—			

Total _____
 Shipping & Handling _____
 Subtotal _____
 Washington Residents Only
 Add 8.2% Sales Tax _____
Grand Total _____

SHIPPING & HANDLING

Merchandise Price	Rate
\$25.00 to \$49.99	\$6.50
\$50.00 to \$99.00	\$7.95
\$100 to \$250.00	\$9.50
\$250.00 to \$350.00	\$14.50
\$351.00 and up	Free

All orders and inquiries call
TOLL FREE 1-800-424-9272
 Mon.-Fri., 8am to 5:30pm
 FAX: (206) 881-5638 anytime

MAIL TO:
 Sunrise Design Tollcraft Apparel
 15500 N.E. 90th St.
 Redmond, WA. 98052

Allow 3-4 Weeks For Delivery

Built for Speed



While hitting an 8.3 second quarter mile at 161 mph on a midwest drag strip, Norm Schlicklin doesn't exactly have time to slow down and smell the roses. Schlicklin can only focus on the race as he revs his 1955 Chevy 500 cubic inch powered drag car toward the finish line.

When his vision starts to blur and his head snaps back against the roar of four 250 horsepower Merc's while racing aboard a 32' Shadow Catamaran at speeds of 107 mph through Canada's 1,000 islands.....Schlicklin can only think of the moment.

"It's just plain fun,0" says the retired Ohio fast food executive of his appetite for fast speeds.

About three years ago, Schlicklin decided to slow down and step back from his world of auto and offshore powerboat racing long enough to buy a 61' Tollycraft for cruising the east coast and Florida Keys.

An experienced yachtsman, Schlicklin had spent many years navigating a 45' Bayliner on the Ohio River. Now he wanted to find a seaworthy yacht capable of speed and comfort while long distance cruising. After an exhaustive search "looking at tons of boats" Schlicklin fell in love with a 1986 61' Tollycraft represented by Bernie Campbell of Shear Yacht Sales.



The yacht was moored on the St. Claire River near Lake Erie where she enjoyed her status as the first "big Tolly" on the Great Lakes. Assisted by his highly able Captain Edward Woodson, Schlicklin embarked on a month-long, 2,300 mile cruise through the Great Lakes and their canal system, down the Hudson River to New York and Atlantic City to its final destination at Marina Bay in Fort Lauderdale, Florida. The journey took them through more than locks on the Oswego and Erie Canals.

In Florida, Schlicklin put the Tollycraft through a massive remodel. The remodel included installation of new appliances, lighting, carpeting, gauges and the latest in electronic technology. Explaining that "I enjoy a good sound system" Schlicklin arranged for installation of state-of-the-art audio visual systems. A laserplot system also allows Schlicklin to monitor navigation of the yacht from televisions located in the staterooms and flybridge.

Schlicklin is especially proud of his flybridge where two custom teak cabinets accentuate a wet bar, icemaker, stainless steel gas grill, refrigerator and "rope lit" bottle cabinet.

In some ways, Schlicklin's remodeling project is almost too suc-

cessful. "I now get at least one inquiry a month from individuals wanting to buy it," he laughs.

After spending two years renovating the yacht, Schlicklin now travels back and forth to Florida from his Cincinnati home, spending the majority of his retirement time living and cruising aboard the Tollycraft. In the last seven months, Schlicklin and Woodson chalked up 8,000 cruising miles to coastal ports in South Carolina and their favorite destination, the Florida Keys.

While Schlicklin slowed down his life enough to take such lengthy cruises, speed is still important. The duo consistently cruise the 61' at 20.7 knots at 1950 rpms. "That's fast for a 61' motor yacht," said Captain Woodson. "It comes off the water like a speed boat," he said, adding "you don't get spray off the bow like you do with a lot of yachts."

Part of Schlicklin's cruising itinerary includes taking advantage of his floating "mini" mega-yacht to view offshore powerboat races. In 1992, the NON-CENT\$ served as the mother ship for the crew of 32' Shadow Catamaran raced by his friend, Dr. J. Merola in the World's Cup Offshore Power Boat Race in Key West, Florida. The race boat made an impressive run, finishing third in its class.

Schlicklin accompanies his good friend on practice runs but usually does not actually participate in the races. An exception occurred three years ago when he rode shotgun in Dr. Merola's catamaran in the annual offshore poker run sponsored by the Canadian Power Boat Association. The five-hour race took them up to speeds of 107 mph through the 1,000 islands on the borders of New York and Canada.

On land and water, the 50-year-old Schlicklin takes time to pursue his love for speed. From his home base in Cincinnati, Schlicklin revs up his other pride and joy—a '55 fiberglass Chevy drag car—for "nostalgic" drag races locally and in Indianapolis and Columbus.

The races, sponsored by the National Hot Rod Association and International Hot Rod Association, spotlight 1960 or earlier vintage cars. The idea is to have fun and enjoy the company of other nostalgic racers, says Schlicklin. While there is no prize money involved, there is definitely some serious speed, reaching up to 161 mph or higher.

"We are racing cars that everyone had at one time," Schlicklin observes. "The fans and spectators really enjoy seeing these cars go that fast."

Now that renovation is complete on his yacht, Schlicklin plans to spend more time pursuing his car racing hobby. However, that doesn't mean he'll slow down on cruising aboard the Tolly.

"My Tolly performs and is equipped with everything I want while providing comfort and convenience for my lady friends," says Schlicklin. "I especially like the fact that it is a good seaworthy boat" and of course "that it's fast for its size."

TOLLYCRAFT PARTS!

YOUR SOURCE FOR REPLACEMENT PARTS FOR
ALL 1990 & OLDER TOLLYCRAFTS
(UP TO 44')

- UNDERWATER GEAR
- HULLSIDE VENTS
- GUNWALE TRIM
- PAINTS & GELCOAT
- VENTURI & TANKS
- MISCELLANEOUS ITEMS
- WOODEN DOORS
- ALUMINUM DOORS
- HINGES
- SLIDERS

Authorized by Tollycraft Acquisition Corporation



RESOURCES INTERNATIONAL
INCORPORATED OF WASHINGTON

P.O. Box 902, Castle Rock, WA 98611-9647
Phone: 360-274-9852 • Fax: 360-274-9151
Contact: Gordon Graham

Old traditions. New standards. And now Northern Lights.

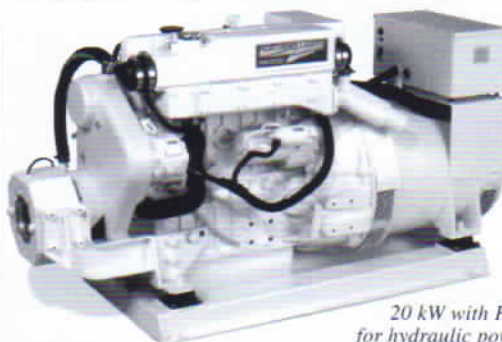
Tollycraft is setting new standards of excellence. As part of this corporate commitment they have chosen to make Northern Lights generator sets an available option.

From the 45' motor yacht to the Champagne Series mega yachts, your new

Tollycraft can have reliable Northern Lights power.

Your guests will appreciate the comfort a quiet Northern Lights set provides. You will enjoy the service support of our international dealers.

Are you devoted to your present Tolly and considering a repower? Send for a free **Tolly Repower Information Kit**. Call 1-800-762-0165 or fax (206) 782-5455.



20 kW with PTO
for hydraulic power.



What great yachts
have in common.

Summer on the Straits of Georgia

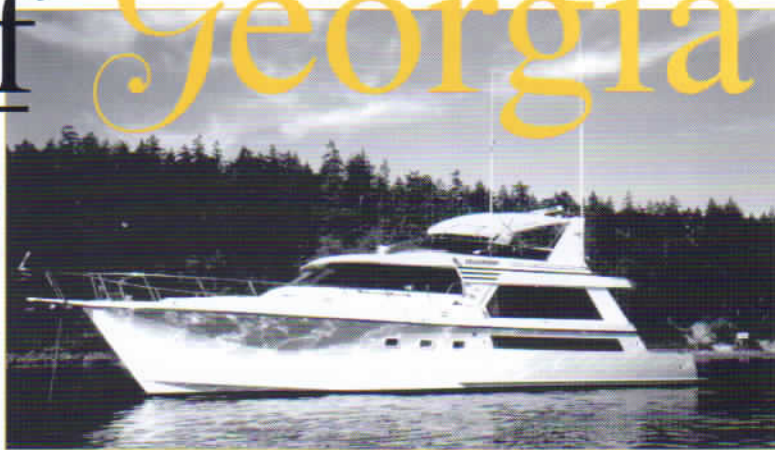
Boating on the crest of giant whirlpools, fishing for pink salmon in Campbell River, enjoying the breathtaking beauty of Vancouver and the quaint, revitalized harbor town of Nanaimo are just some of the adventures auto executive Dick Hannah enjoyed this summer aboard his 57' Tollycraft Cockpit Motor Yacht.

Hannah and his wife, Marilyn, cruised the Straits of Georgia to various destinations along Vancouver Island and mainland Canada. Their trip included memorable stays at the foot of the Empress Hotel in Victoria and the beautiful Sydney Yacht Club. They also tested their navigational skills on a foggy traverse across the Straits of Juan De Fuca and a challenging high tide passage through Dodd Narrows enroute to Nanaimo.

While the weather was "not so great," Hannah said they enjoyed some truly memorable experiences while cruising with friends and family throughout Canada.

Perhaps their most memorable was boating through the narrow channels and majestic fjords near Dent Island in Northern Canada. The couple moored their Tolly at Big Bay and took a guided tour aboard a Boston Whaler to explore giant whirlpools on Dent and Erin rapids. The dangerous whirlpools have earned a reputation for swallowing and sinking 50' fishing boats. Occurring at maximum run-off, the whirlpools "well up from nowhere," enthuses Hannah. The guide gave the Hannah's plenty of thrills as they maneuvered the Boston Whaler on the edge of the whirlpools.

The Hannahs also enjoyed their stay with the Royal Vancouver Yacht Club at Coal Harbor, located on English Bay by Vancouver's famous Stanley Park. A Portland,



Oregon Acura dealer, Hannah spent his time in Vancouver attending a national Acura dealer meeting. The couple welcomed several of the dealers aboard their aptly named yacht "Dealership" for a special cruise up to the headwaters of English Bay.

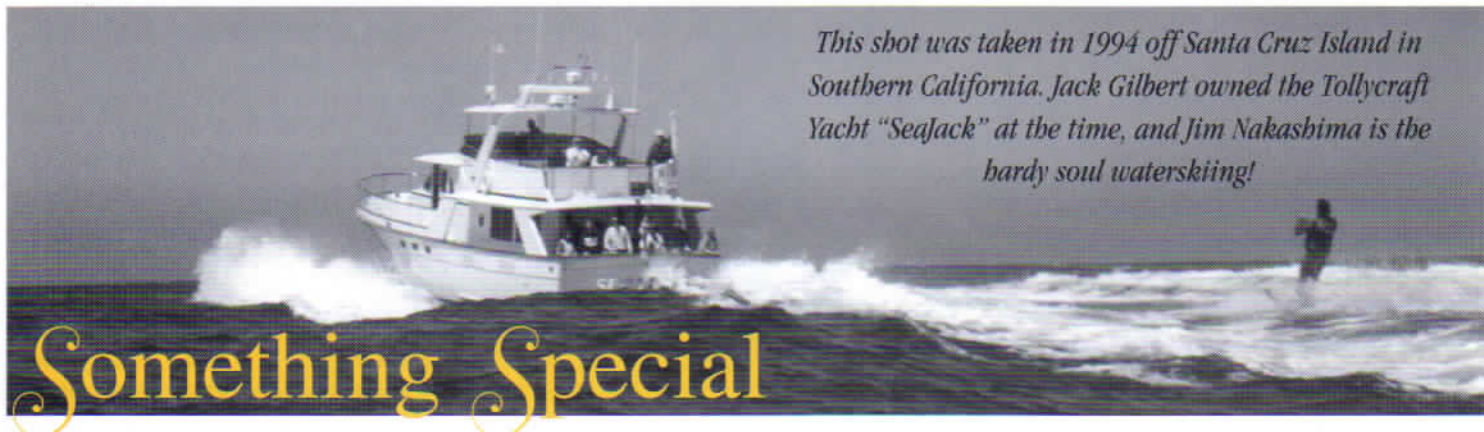
The layout and design of the 57' made the trip even more pleasurable. In Campbell River, the famed *Salmon Capital of the World*, the Hannah's made full use of the 57's 125-square-foot cockpit by reeling in 16 salmon. The spaciousness of the widebody design made the trip comfortable, even in adverse weather. "The big salon on the 57' is really great," Hannah remarked. "It was designed for a live-aboard....so it's not cramped at all."

Hannah was also impressed with the quiet power of his 820 hp MAN engines. Cruising at speeds of 15-17 knots, the 57' "got us to our destinations *fast*." He said the yacht performed well in a variety of conditions including 40-knot winds enroute to Campbell River.

The Hannah's finally found favorable weather as they headed towards home on the ocean waters from Port Angeles to Westport. "The weather was absolutely beautiful," said Hannah of the sunny ending to his nautical excursion.



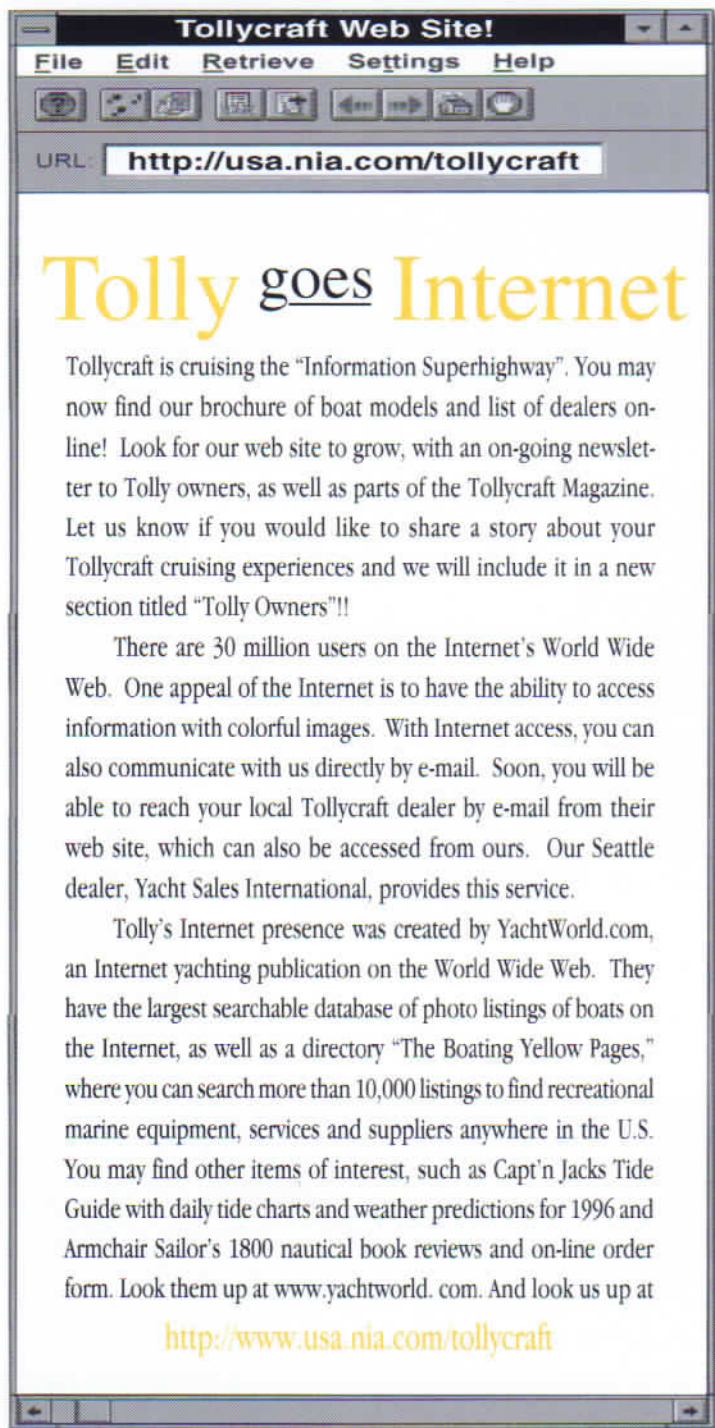
This shot was taken in 1994 off Santa Cruz Island in Southern California. Jack Gilbert owned the Tollycraft Yacht "SeaJack" at the time, and Jim Nakashima is the hardy soul waterskiing!



Something Special

Jollycraft BOATING CLUB

a message from the Commodore



Tolly goes Internet

Tollycraft is cruising the "Information Superhighway". You may now find our brochure of boat models and list of dealers online! Look for our web site to grow, with an on-going newsletter to Tolly owners, as well as parts of the Tollycraft Magazine. Let us know if you would like to share a story about your Tollycraft cruising experiences and we will include it in a new section titled "Tolly Owners"!!

There are 30 million users on the Internet's World Wide Web. One appeal of the Internet is to have the ability to access information with colorful images. With Internet access, you can also communicate with us directly by e-mail. Soon, you will be able to reach your local Tollycraft dealer by e-mail from their web site, which can also be accessed from ours. Our Seattle dealer, Yacht Sales International, provides this service.

Tolly's Internet presence was created by YachtWorld.com, an Internet yachting publication on the World Wide Web. They have the largest searchable database of photo listings of boats on the Internet, as well as a directory "The Boating Yellow Pages," where you can search more than 10,000 listings to find recreational marine equipment, services and suppliers anywhere in the U.S. You may find other items of interest, such as Capt'n Jacks Tide Guide with daily tide charts and weather predictions for 1996 and Armchair Sailor's 1800 nautical book reviews and on-line order form. Look them up at www.yachtworld.com. And look us up at

<http://www.usa.nia.com/tollycraft>

Greetings to everyone! 1995 was a great year including a fabulous 1995 Tollycraft Rendezvous. Held at the Port Orchard Marina in Port Orchard, Washington, we had 90 Tollycrafts in attendance. Thanks to everyone who helped make the 1995 Rendezvous a great and well represented success.

The Ninth Annual Tollycraft Rendezvous is planned for June 28 - 30, 1996 again at the Port Orchard Marina in Port Orchard. The entire open moorage area at the marina will be reserved for the Tollycraft Rendezvous and the banquet will be held at the Port Orchard Yacht Club. We will feature, by special request, the return of Arel Thomas as the entertainment. There will be surprises, prizes, keepsakes and more.

While last year's Rendezvous is going to be hard to beat, all the officers believe that it can be done with all of our planning and your cooperation. Your continued support through membership and dues makes all the difference. We are growing, which means bigger and better get-togethers for all of us.

Mark your calendars for the 1997 Rendezvous, scheduled June 26, 27 and 28, departing on the 29th. The Tollycraft Boating Club will be coordinating the event with the Canadian Tollycraft Cruising Club, to be held at Roche Harbor. The 1997 Rendezvous should top them all. Mark your calendar, pay your dues and make your reservations.

Your 1995/1996 Board consists of:

George Haskins	Commodore
Howard Glazer	Vice Commodore
Don Jenkins	Rear Commodore
Steve Pigott	Treasurer
Pam Ellard	Secretary
Tom Gendreau	Trustee (New Position)
Doug Filer	Trustee (New Position)
Dave Ellard	Past Commodore

The Advisory Committee consists of:

Leo Collar	Yacht Sales International
David Nanson	Tollycraft Yachts
R.M. "Tolly" Tollefson	

A special thanks to Yacht Sales International, Tollycraft Yachts and N.C. Machinery.

Remember your 1996 Tollycraft Boating Club dues are owing. We need your support for this coming year. Mail dues to Steve Pigott, Rt. 1, Box 2256A, Lopez Island, WA, 98261.

Jollycraft BOATING CLUB MEMBERSHIP APPLICATION

Name _____ Spouse Name _____

Address _____ City/State/Zip _____ Phone(s) _____

Boat Name _____ Length _____ Year _____ Style _____

Hull # _____ Moored at _____ Owned Since _____

New memberships are \$36 for the first year, \$24 for each additional year. Please send application with check payable to: Tollycraft Boating Club, c/o Steve Pigott, Treasurer, Route 1, Box 2256A, Lopez Island, WA, 98261. We will send your burgee and membership roster upon receipt of your membership.

✉ Note to members: It is important that you update us on your ownership status to prevent deletion from the mailing list.

Message from the Top

TOLLYCRAFT CELEBRATES SIX DECADES

Tollycraft is just completing its \$1.5 million renovation on the Kelso plant. We laid 160,000 feet of new roofing and we are adding a 12,000 square foot assembly bay to handle our increased production needs. This renovation will propel Tollycraft Yachts into the next century and enable us to achieve our production goals and keep us moving forward as leaders in the market.

Tollycraft Yachts has announced the design and production of a new 50' Pilothouse Motor Yacht, as well as the new Champagne Series. In late August, we will introduce a smaller pilothouse version. These new yachts will project "a timeless look" that reflects more the American style of boat building as opposed to the "flash and dash" of Euro-style boat builders.

In addition to these new and exciting models, the company is moving forward with the expansion of its dealer network. Team Tollycraft has joined us on the west coast of Florida with four locations, one in Naples and three more to come. We look forward to them joining the Tollycraft team and providing us with the coverage on the East Coast that the market is demanding.

We are eagerly anticipating the upcoming Seattle and Miami Boat Shows where Tollycraft Yachts will unveil the newest products for our customers. This includes what we feel to be the finest Tollycrafts ever produced, leading us into the 60th year of the company's history. We believe all Tollycraft owners, past, present and future, will be proud to have a vessel produced by a company with 60 years of traditions and exacting standards. We look forward to producing our customers' yachts, servicing them in an efficient and proper manner and having them part of the Tollycraft family.

As part of meeting customer demands we have added key management staff. This includes our new Warranty and Service Manager, as well as several new production supervisory personnel. Additionally, we are expanding and improving our management information systems in an effort to focus on better servicing our customers, producing the yachts they desire, and delivering product to them in a timely manner.

Tollycraft Yachts is focused on creating a year full of growth, innovation and success in 1996.

Tolly
D.R. Cooley
President, Tollycraft Yachts

Tollycraft Magazine is published quarterly by Tollycraft Yachts, 2200 Clinton Avenue, Kelso, Washington 98626, 360/423-5160, fax 360/423-2607. Reproduction in whole or in part is strictly prohibited. For advertising rates and information, call Washburn, Johnson & Associates at 503/283-1140, fax 503/283-1146.



TOLLY UNIVERSITY

Last September was back to school at Tollycraft. Our first "Tollycraft University" session brought dealers, engineers, supervisors and vendors together at the Kelso, Washington plant for two days of hands-on education. From the engines to the hull, deck and flybridge, we walked through the finer points of how Tollycraft constructs stronger, safer boats for our customers. We

believe this information is especially important for our dealers who must be familiar with the inner workings of our yachts to effectively sell them. We want our dealers to represent our company in the most professional way possible.

The first of these quarterly seminars was a huge success. We had a total of 26 brokers representing seven states across the country, including Florida, Virginia, California and Washington.

BOAT SHOWS

Tollycraft sponsors four major boat shows each year, as well as participating in our dealers' local shows. SuperYachts Northwest in-the-water show held in Kirkland Washington, immediately followed Tollycraft University. This show, represented by Yacht Sales International, proved to be a

Higher Standard creating a

big success, closing a sale on a 57' Tollycraft Walkaround. Another eager buyer hopped a cab to our Kelso plant to get a preview of the new 65' under construction.

Tollycraft took a premiere position on the end of the VIP dock this year at the Ft. Lauderdale International Boat Show. It was a huge success! Tolly was well represented by six dealers (Atlantic Yacht Brokers from Virginia, Shear Yacht Sales from Palm Beach Gardens, Yacht Sales International from Seattle and Miami, Team Tollycraft from Naples, and Chuck Hovey Yachts from Newport Beach) with four yachts; two 45-footers, one 48-foot and one 65-foot. The response was phenomenal, with the sale of four yachts, and over a dozen serious leads. Show goers were in agreement "These are the nicest Tollys ever seen."

The response followed suit at the St. Petersburg and Tampa shows, indicating people are really excited about how the product is coming along and some of the changes we've made. The new Tollycrafts reinforce what Tolly has always been known for; old-world craftsmanship combined with leading-edge technology.

Wishing you oceans of peace, happiness and prosperity for 1996.

David Nanson
Sales Manager, Tollycraft Yachts

SIT IN THE LAP OF LUXURY.



Shown: Sofa unit with under-seat storage, modular to pass through 17" companionways.

For marine furnishings, look for custom design, modular construction, practicality and a sea of beautiful fabrics and leathers.

You'll find all that at Barrett — with the size, comfort and quality you'd expect for your home, adapted for your pleasure craft.

From the first consultation through final installation, Barrett's attention to detail ensures your custom

furnishings will be a durable and lasting enhancement.

Barrett enjoys a reputation for attention to detail across their product line. From marine canvas and upholstery, to their unique patented Lexan® enclosure technology.

Call today for a free consultation and estimate. You'll be sitting pretty.



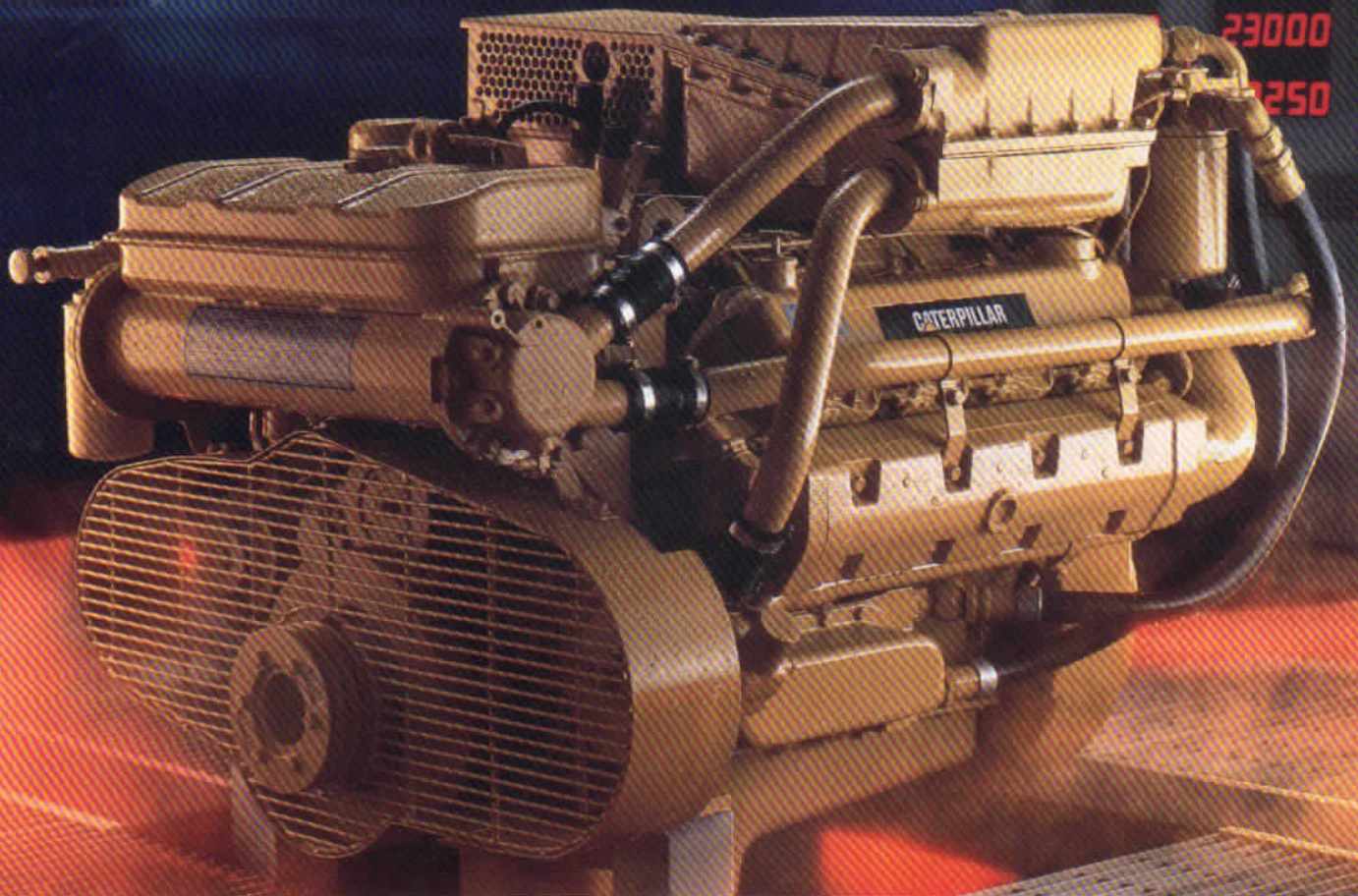
BARRETT

Marine Upholstery, Canvas & Lexan Enclosures

206-282-2800 or 800-282-5740

We scald, throttle and torture our engines so they won't die on you.

09000 03060
23000
2250



At Caterpillar, we freely admit to abusing our marine engines. In fact, we're downright proud of it.

Because by subjecting our engines to the hostile conditions simulated in our test labs, we have tangible proof they can survive any kind of beating our customers might dish out.

Take the Cat thermal cycle test. We heat our 3208 Engine to scalding - then quickly cool it down to the surrounding air temperature. Repeated 4,000 times, it's a sure fire test of an engine's ability to withstand thermal stress.

Then there's our durability test. For thousands of hours, our engines are run under full load conditions at elevated temperatures. Proof they can live through the

kind of grueling workout no pleasure craft could ever duplicate.

These are just two of the hundreds of torture tests our engines must endure before they meet our approval. It's our way of assuring you that when you purchase a Cat® Marine Engine, you're getting the most reliable engine money can buy.

And that's something we put to the test everyday.

For your free brochure on the full spectrum of Cat® Marine Engines, call 1-800-321-7332 (U.S.A. or Canada).

