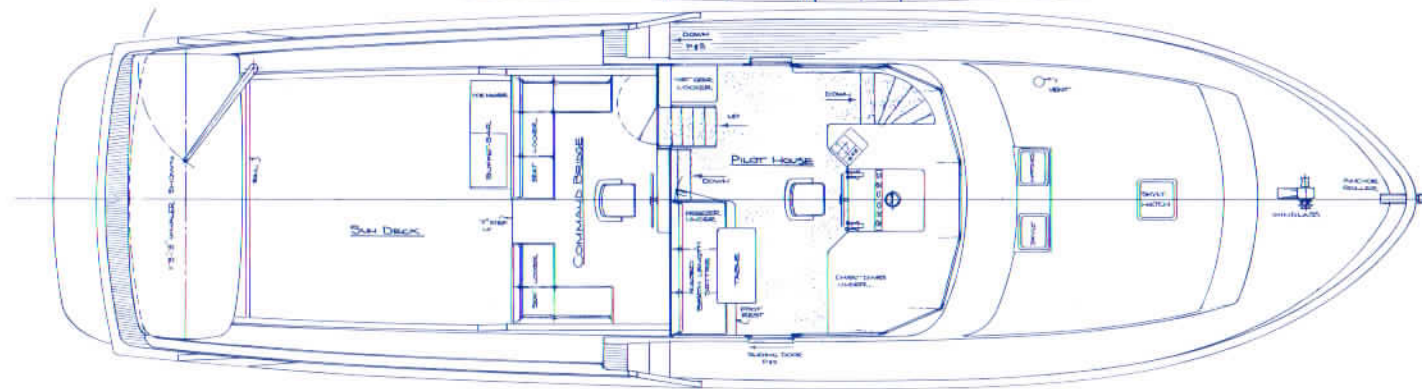
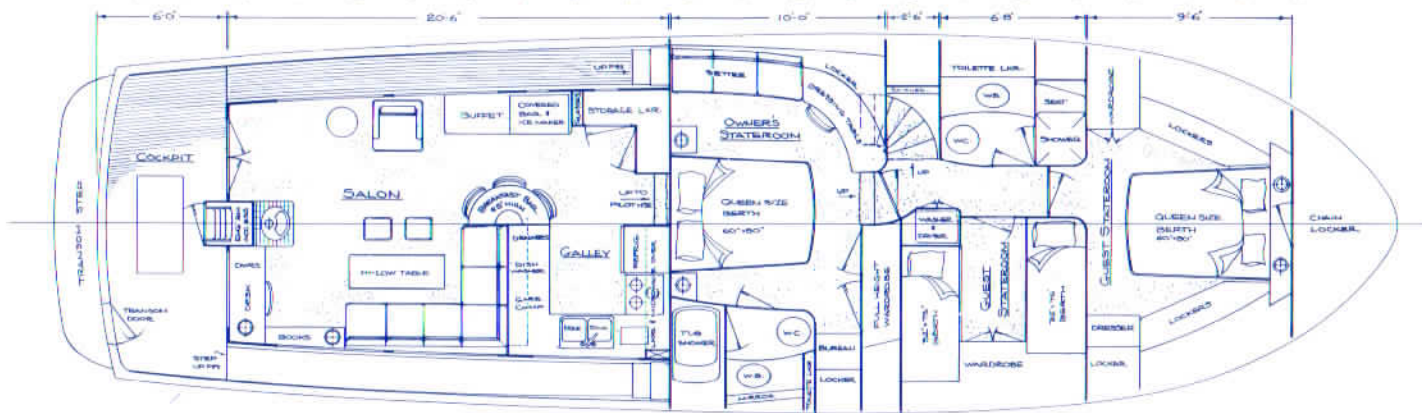




61' Motor Yacht

Tollycraft
LUXURY PLEASURE CRUISERS 1984



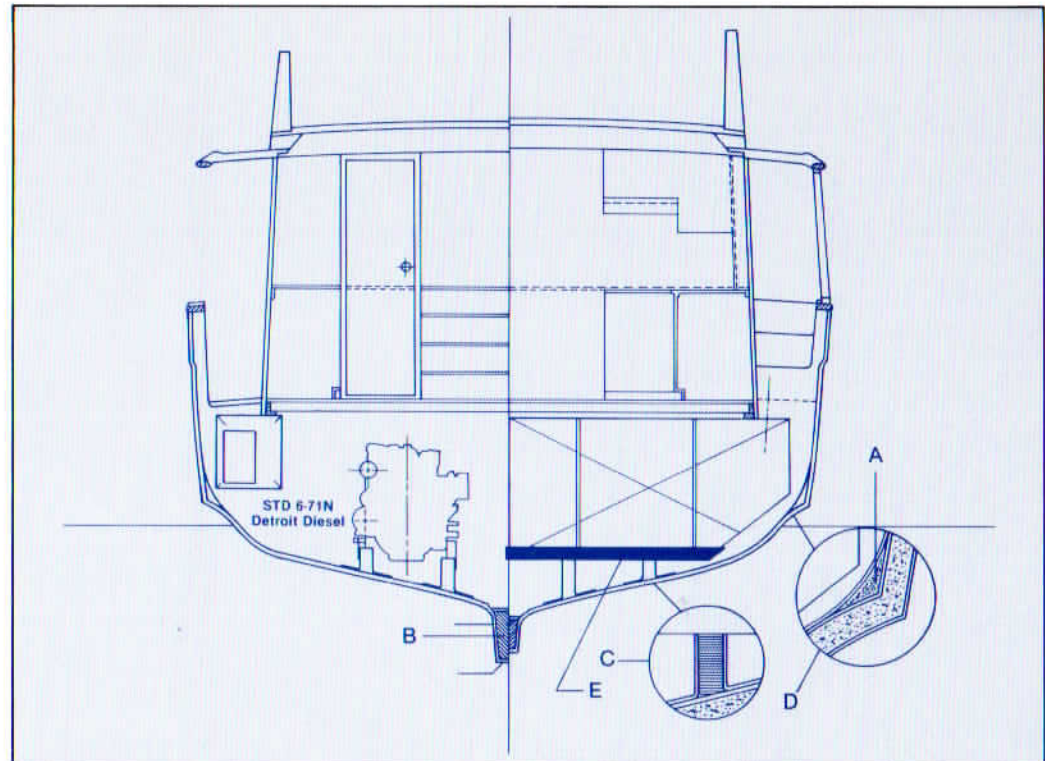
61' Motor Yacht

Unquestionably, one of the finest yachts available today is the new Tollycraft 61'. Here is a truly magnificent craft whose beauty is more than "skin deep".

Her handsome lines blend perfectly with the functional design of the spacious sun-deck and wide side-decks. The highly polished look of elegance is overwhelmingly evident, reassuring its owner that here is craftsmanship without compromise.

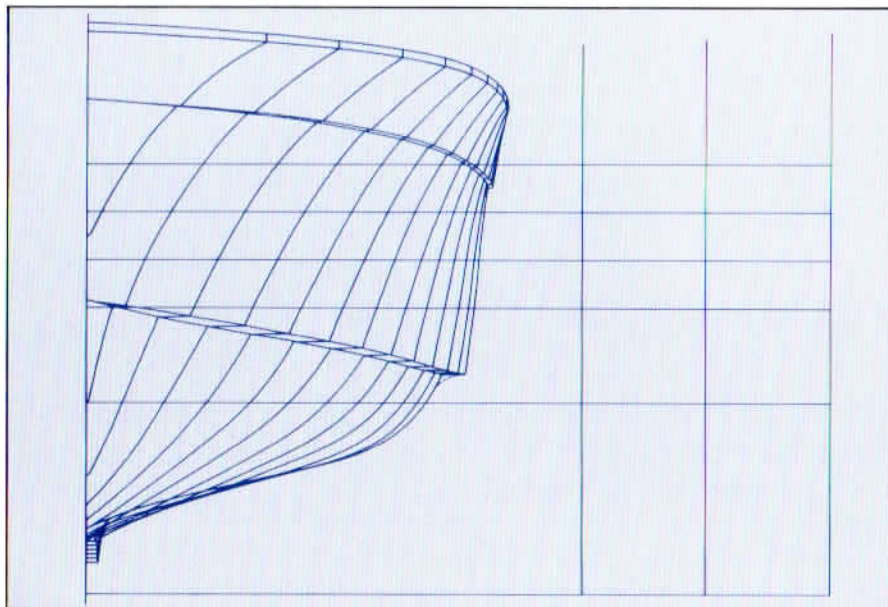
Interior accommodations also reflect Tollycraft's commitment to fine craftsmanship and meticulous attention to detail. From the well appointed aft salon, to the very private staterooms, the 61' Motor Yacht exemplifies superb layout and design.

The standard equipment list is very extensive, covering a wide array of features which will provide the owner with every comfort and convenience.



- A. Critical Stress Reinforcing:** 2" closed cell foam w/heavy fiberglass overlay.
- B. Solid Keel:** Keel filled w/silica/resin, high density closed cell foam & steel reinforcing bars. (Keel sides approximately 3/4" thick and keel bottom approximately 1 1/2" thick, solid fiberglass laminate).
- C. Full Length Fiberglass "Hat" Stringers:** Filled w/high density closed cell foam.
- D. Sandwich Core Construction:** 3/4" core sandwiched between solid fiberglass laminate on hull sides & bottom.
- E. High Strength Fuel Tank Mounts:** 4" x 4 3/8" Aluminum angle fuel tank mounts lag bolted into each stringer.

The 61' Motor Yacht is built on a new futuristic hull design, exhibiting outstanding handling and performance characteristics with minimum horsepower. The hull employs a full length spray knocker, varying from 4" to 9" in width, approximately 7" above the waterline. The wide spray knocker has been carefully faired in to eliminate any tendency to pound. This feature provides a dry ride, and less wetted surface at high speeds. An added bonus is the roll dampening effect it has in a beam sea. Sandwich core construction is utilized to reduce weight and provide a solid, quiet ride.



Standard Equipment*

Mechanical Equipment: Twin 6-71N Detroit Diesels, FWC, 2.5:1 Red., 310 HP Each • Air Compressor For Whistle & Engine Room • Alarm Systems-Audio on Temp, Oil • Battery Charger, 60 Amp, 120 Volt to 12 Volt • Batteries, H.D. 6—12 Volt, 230 Amp Hr. • Battery Isolator • Battery Switches, Vapor Proof • Belt Guards, Engines • Bilge Blowers, 2—4" 12 Volt • Bilge Pumps, 5 Automatic, 12 Volt • Circuits, Individually Fused & Color Coded, 12, 120 & 240 Volts • Clutch & Throttle Controls, Hydraulic, Dual Station • Compasses, 2-6" • Drainage System For Sinks, Showers & Deck, Discharge Through Transom • Fuel Tank Crossover For Port or Starboard Loading • Electrolysis Bonding System • Engine Hour Meter—2 • Engine Room Access From Cockpit w/Locked Door • Fuel-Water Separators, Dual • Full Instrumentation Both Stations • Generators, 20 KW & 7.7 KW, 120/240 Volts, FWC, Sound Shield, Mufflers, & Hour Meters • Instrumentation, Mechanical In Engine Room, Both Engines • Level Indicator On Water Tanks • Lights, Engine Room, 12 Volt • Mounts For Spare Propellers, Lazerette • Mounts, Engines, Rubber & Adjustable • Mufflers—2 • Oil Change Pump System, 12 Volt • Shaft Bearings, Rubber • Stainless Steel Prop Shafts, H.D. 2 1/4" • Steering, Hydraulic, 30" Vertical • Strainers, Intake Water (Engines & Generators) • Through Hull Fittings, Bronze • Underwater Gear, High Test Bronze V-Struts, Rudders w/Stainless Steel Post & Molded Urethane • Water Systems, Fresh Hot/Cold—Seawater To Deck Hose Bibs • 2—30 Amp, 120 Volt Shorepower Receptacles, Port & Starboard • 1—50 Amp 240 Volt Shorepower Receptacles, Port & Starboard • 2—50 Shorepower Cords • 120/240 Volt Circuit Breaker Panel w/Meters • 12 Volt Circuit Breaker Panels w/Meters • 30 Gal. Hot Water Heater, Heat Exchanger, & 240 Volt

Exterior Equipment: Anchor, (Navy Type), w/300' 3/8" Chain & Stainless Steel Bow Roller • Anchor Windlass, 12 Volt—w/Power Up & Down • Bell, Ships • Bottom Paint, Anti-Fouling w/Boot Stripe • Command Bridge w/Full Controls & Instrumentation • Command Bridge Seats, Bench Seating & Swivel Pilot Chairs • Command Bridge Canvas Cover • Cover, Pilot House Windshield • Davit Arm w/Electric Winch • Deck Hardware, Stainless Steel • Deck Lights, 12 Volt—8 • Decks, Simulated Teak & Non-Skid • Dinghy, 13'4" Coho • Doors, Sliding Port & Starboard On Pilot House • Ensign Staff, Teak • Handrails, Toe Rails, Caps & Trim—Teak & Stainless Steel • Horn, Air • Hullside Pressure Water Inlet • Life Rings—2 • Lights, Anchor, 12 Volt • Lights, Dash, 12 Volt Command Bridge • Lights, International Running, 12 Volt • Mast,

Wishbone, For Radar & Etc. • Mooring Lines, 4—3/4"x50" • Shaft Storage Tube • Tollycraft Pennant w/Bow Staff • Transom Door • Transom Step • Transom Step Swim Ladder • Wet Bar w/Icemaker, On Sun Deck • Window Screens, On Opening Windows • Windows, Tinted Safety Glass • Windshield, Command Bridge, Tinted Plexiglass • Windshield Wipers (Pilot House)—3

Interior Equipment: Aft Salon Bi-Fold Door • Buffet Bar w/Storage & Liquor Cabinet • Carpet, Floor, w/Padding Throughout • Carpet, Interior Hullsides Where Exposed • Chain Locker In Forepeak w/Door • Circular Staircase • Countertops, Mica Or Marbleized • Decor, Decorator Coordinated • Desk, Built-in, Salon, Teak • Dishwasher, 120 Volt • Doors, Slab Teak Or Painted • Draperies, Lined Throughout • Drawers For Charts (48" x 36"), Pilot House • Electronics Panel, Above Lower Station • Fire Extinguishers—8 • Fireplace, Salon, On Tile Base • Forward Cabin Deck Hatches w/Screens—3 • Garbage Disposal, 120 Volt • Heads, TDX (Mansfield) C.G. Approved w/Holding Tank • Headliner, Vinyl Throughout • Heaters, 240 Volt • Helm Seat, Pilot House, Portable • High-Low Cocktail/Dining Table • Insulation, Sound Shielded Engine Room • Intercom System, Pilot House, Engine Room, Master Stateroom & Command Bridge • Interior Woodwork, Teak In Salon, Galley, & Pilot House—Painted/Wallpapered in Sleeping Areas & Heads • Instant Hot Water Dispenser, 120 Volt • Lights, Cabin, Indirect • Lights, Dash, 12 Volt • Local Switching For Lights • Mattresses & Cushions, Polyfoam & Dacron • Microwave Oven, 120 Volt, w/Range Vent & Lights • Mirrors—6 • Owner Manual • Port Lights & Sliding Windows w/Screens • Power Ventilators, Heads & Galley • Queen Size Bunks, Master & Forward Stateroom • Radar Cabinet, Pilot House • Range, 4 Burner w/Oven, 240 Volt • Refrigerator, 120 Volt, 19.5 Cubic Foot (Includes Door Dispensed Ice/Water & 6.68 Deep Freeze) • Settee w/Table, Pilot House • Settee, Salon, Built-In w/Hide-A-Bed • Showers & Tub, w/Automatic Drain Pumps, 12 Volt • Sinks, Marbleized In Heads & Stainless Steel In Galley & Wet Bars • Stereo, AM/FM & Tape, w/Speakers • Telephone Jacks For Shore Phone • Towel Bars, Paper Holders & Soap Dishes • Trash Compactor, 120 Volt • Twin Bunks, Mid-Stateroom • Vacuum Cleaning System, 120 Volt • Washer & Dryer • Windshield Defogger System, Pilot House • Windshield Washer System, Pilot House



2200 Clinton Avenue
Kelso, Washington 98626
Phone (206) 423-5160

*Applies to hull #'s 11 and beyond

SPECIFICATIONS

(Tentative, based on present design and engineering)

Centerline Length	61'2"
Beam	17'8"
Freeboard Forward	9'0"
Freeboard Aft	6'0"
Height Above Waterline (Top of windshield)	15'0"
Height Above Waterline (Top of mast)	17'6"
Draft	4'0"
Weight (Average Displacement)	65,000 lbs.
Fuel Capacity	1,200 gals.
Water Capacity (Fresh)	400 gals.
Sleeping Accommodations (In 3 Staterooms plus Salon & Pilot House)	6

NOTE: Specifications contained in this brochure are based on the latest production information available at time of publication. The right is reserved to make changes at any time without notice in prices, color, materials, equipment, specifications and models.

Construction Features: Hand Laminated Sandwich Cored Hull, Foam Filled Full Length Longitudinal Stringers. Solid Keel—Filled With Foam & Silica/Resin. Hand Laminated Deck, Cored With End Grain Balsa On All Horizontal Surfaces.

ESTIMATED SPEEDS

(Not Guaranteed)

	(Knots)
Twin 210 H.P. Cat 3208	Cruise 12 / Top 13½
Twin 300 H.P. Cat 3208T	Cruise 15 / Top 16
Twin 310 H.P. GM 6-71N	Cruise 15 / Top 17
Twin 410 H.P. GM 6-71TI	Cruise 17 / Top 18½
Twin 435 H.P. GM 6V-92TA	Cruise 19 / Top 21
Twin 550 H.P. GM 8V-92TI	Cruise 20 / Top 22

LOCAL DEALER

Western Yacht Sales
2412 Westlake Ave. No.
Seattle, Washington 98109
(206) 282-3210