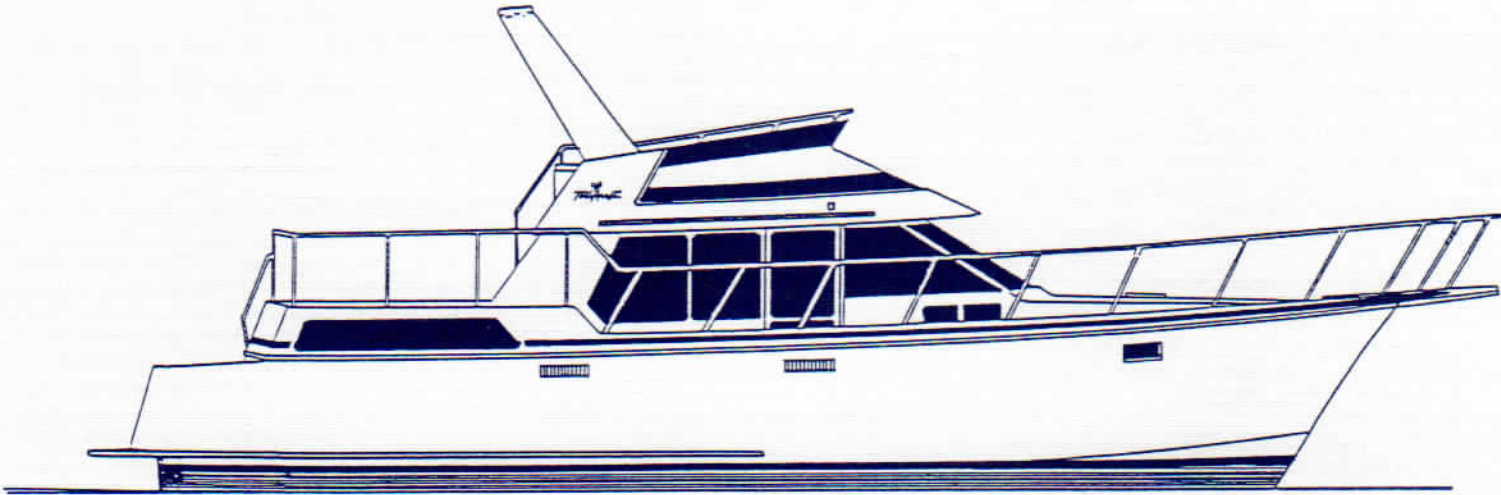



Tollycraft[®]
Yachts



TOLLYCRAFT 45' COCKPIT MOTOR YACHT

Quadra lift[™]

STANDARD EQUIPMENT

HARDWARE AND MISC EXTERIOR ITEMS:

Anchor Windlass with 200' chain, chain stop, anchor (includes power up and down)
Bow, stern staffs
Bow pulpit, fiberglass, with roller
Cleats: 2 bow, 2 stern, 4 springline
Deck Lights, 12 volt
Feature stripes: cabin, bridge, and hull
Gunwale trim, vinyl with stainless steel insert
Handrails and rail fittings, 1" 316L stainless steel (welded)
Hardware, stainless steel and chromed brass
Horn, electric
Ladder, cockpit to sundeck, stainless steel with teak step treads
Transom step, fiberglass
Trim tabs, hydraulic
Weather covers: bridge settee, helm chairs, and cabin windshield

ENGINE ROOM AND BILGES:

Belt covers engines
Bilge blowers (3)
Bilge pumps, automatic (4)
Common drainage system for sinks, showers, and decks
Electrolysis bonding system
Fuel water separating filters (Racor), (Diesel only)
Generator, 8.0kw Diesel (FWC), with sound shield and battery
Intake water valves (Ball valve)
Lights, 12 volt
Mufflers
Propeller shafts 1 1/4" stainless steel (Aquamet 22)
Propeller shaft seals (oil type)
Rudders, high test bronze
Sound insulation, engine room and lazarette
Strainers, intake water
Struts, bronze with cutlass bearings
Through hull fittings: bronze below waterline, nylon and bronze above waterline

ELECTRICAL SYSTEM AND COMPONENTS:

Alarm system, audio: temperature and oil pressure
Batteries, heavy duty 12 volt
Battery charger (Ratelco)
Battery isolator
Battery paralleling system (diesel only)
Battery switch, vapor proof
Electrical distribution and control panels with magnetic circuit breakers, amp and volt meters (12 and 120 volt)
Hour meters for main engines
Lights: 12 volt
Navigation lights
Outlets: duplex, 120 volt
Pressure water system, 12 volt
Shore power receptacle: 120 volt, 50 amp, with 50' cord
Water heater, 120 volt with heat exchanger

SALON:

Breakfast bar
Carpet with pad
Doors, access to sundeck and starboard side deck
Entertainment center cabinet, color TV, VCR, 12 volt stereo with cassette and compact disk player, speakers, cable TV and telephone inlet, tape and bottle storage
Hide-a-bed settee
Draperies, lined (panels)
Lights, 12 volt
Miniblinds
Overhead electronics panel

GALLEY/DINETTE:

Carpet with pad (dinette)
Dinette, raised with table (converts to berth)
Draperies, lined

Drawers
Lights, 12 volt
Lockers, storage
Pastry board
Range, 3 burners with convection/microwave oven
Refrigerator (12 volt/120 volt) (8 1/2 cubic feet capacity)
Sink, stainless steel
Steps, hinged, access to engine room
Teak and holly floor (galley)
Windows

MASTER STATEROOM:

Accent pillows, shams, bedspread in selected decor
Carpet with pad
Door, sliding, privacy
Double berth (oversized) with polyfoam and Dacron mattress
Draperies, lined
Hanging lockers (2)
Hatches, window (escape)
Lights, 12 volt
Mirrors
Nighstand with drawers
Vanity with lighted mirror

FORWARD STATEROOM:

Accent pillows, shams, bedspread in selected decor
Carpet with pad
Chain locker in forepeak with mirrored door
Deck hatch with screen (escape)
Door, privacy
V-berth with polyform and Dacron mattress
Draperies, lined
Hanging locker
Lights, 12 volt
Mirrors
Portlights with screens, stainless steel

HEADS:

Carpet with pad
Countertops and sinks, marbled
Doors, privacy
Drawers
Heads, VacuFlush with holding tank (12 macerator and deck discharge)
Lights, 12 volt
Mirrors
Portlights with screens, stainless steel (forward head)
Power ventilators (forward and aft heads)
Shower stall with privacy door and drain pump (12 volt), aft head
Shower pan with curtain (forward head)
Towel bars, paper holders, soap dishes

MISCELLANEOUS INTERIOR EQUIPMENT:

Air ventilator, storage lockers
Carpet, interior lockers
Central vacuum system
Countertops, high pressure laminate
Headliners, panelized
Lights, indirect, in valance and on steps (12 volt)
Owner's manual with pamphlet bag
Sliding tinted windows, with screens
120 volt duplex outlets

AFT DECK/COCKPIT:

Access hatches to lazarette bilge
Transom door
Cockpit seats (2) with cushions

BRIDGE:

Control station, upper helm with hydraulic steering, MMC electronic controls, full instrumentation, digital tachometers, compass and rudder angle indicator
L-settee (fiberglass with cushions)
Instrument lights, 12 volt
Pilot chairs (2)
Windshield, tinted plexiglass with hand rail, stainless steel

OPTIONAL EQUIPMENT

SAFETY OPTION GROUP:

S-1 SAFETY GROUP (GAS) INCLUDES:

Carbon monoxide detector, interior (2)
 Fire extinguishing system, Fireboy (Halon)
 Gas vapor detector (Sniffer), single station
 High water level alarm, bilge \$ _____

S-2 SAFETY GROUP (DIESEL) INCLUDES:

Carbon monoxide detector, interior (2)
 Fire extinguishing system, Fireboy (Halon)
 (MA) with engine shutdown/override system
 High water level alarm, bilge \$ _____

MECHANICAL:

A-1 Battery, house, extra, with switch \$ _____
 A-4 Oil change pump system (for main engines) \$ _____
 A-9 Grid for single side band (above waterline) \$ _____
 A-10 Electrical outlet (120 volt) exterior (with ground fault interrupter and cover) \$ _____
 A-20 Diesel furnace (Espar) \$ _____
 A-24 Generator, 6.5 KW gas (FWC) \$ _____
 A-25 Generator, 9.0 KW gas (FWC) \$ _____
 A-31 Propellers, additional set \$ _____
 A-34 Propeller shaft, additional \$ _____
 A-37 Shore power receptacle, extra \$ _____
 A-40 Synchronizer — MMC (electronic) \$ _____
 A-43 Synchronizer — Glenndenning \$ _____

EXTERIOR:

B-5 Dockside pressure water inlet \$ _____
 B-10 Transom step, swim ladder \$ _____
 B-11 Cockpit entry steps \$ _____
 B-21 Footrest for swivel chair (2) \$ _____
 B-23 Sony stereo, am/fm cassette, with 2 speakers and splash cover (command bridge) \$ _____
 B-31 Deck box with cushion \$ _____
 B-33 Dinghy davit \$ _____
 B-37 Hardtop with stainless steel supports (requires B-40) \$ _____
 B-40 Arch mast with light (not hinged) \$ _____
 B-42 Canvas dodgers for sundeck \$ _____
 B-45 Shower, remote mount, cockpit, fresh water \$ _____
 B-52 Washdown pump system (raw water outlet forward, fresh water aft) \$ _____

INTERIOR:

C-10 Air conditioning, reverse cycle \$ _____
 C-13 Am/fm stereo cassette \$ _____

INTERIOR: (Cont.)

C-14 Am/fm compact disk \$ _____
 C-16 Barrel chair, upholstered \$ _____
 C-18 Bar stool, upholstered \$ _____
 C-22 Lower control station with instrumentation \$ _____
 C-34 Heater \$ _____
 C-38 Hi-lo table \$ _____
 C-39 L-settee with hide-a-bed in lieu of standard \$ _____
 C-40 Ice maker in salon \$ _____
 C-52 Teak and holly dinette \$ _____
 C-53 Trash compactor \$ _____
 C-60 Watermaker \$ _____
 C-76 Washer and dryer \$ _____

MISCELLANEOUS:

E-1 Commissioning, dealer location \$ _____
 E-10 Bridge shipping cradle \$ _____
 E-16 Labor to install bridge \$ _____
 E-19 Labor to install customer's transducer (each) \$ _____
 E-21 Labor to install customer's radar cable \$ _____
 E-30 Commissioning, Port of Kalama \$ _____

DECOR:

Standard

Optional Upgrade

SPECIFICATIONS

CENTERLINE:

Bow to Transom	45'3"	13.79M
Bow Pulpit to Transom Step	50'7"	15.42M
Waterline	39'5"	12.02M
Beam	14'8"	4.47M

Freeboard:

Forward	76"	1.93M
Aft	44"	1.12M

Height Above Waterline:

Top of Venturi	12'0"	3.66M
Top of Mast	13'11"	4.24M

Draft	36"	.91M
-------	-----	------

Deadrise:

Midship	14 Degrees
Transom	10 Degrees

Fuel Capacity	398 Gal	1506L
---------------	---------	-------

Water Capacity	140 Gal	530L
----------------	---------	------

Holding Tank Capacity	56 Gal	211L
-----------------------	--------	------

Weight:

Average Displacement	28,000 lbs.	12700kg
Cabin Headroom:	6'3"	1.91M
Cockpit Area:	42 sq. ft.	3.9 sq. M
Sleeping Accommodations:	6 to 8	

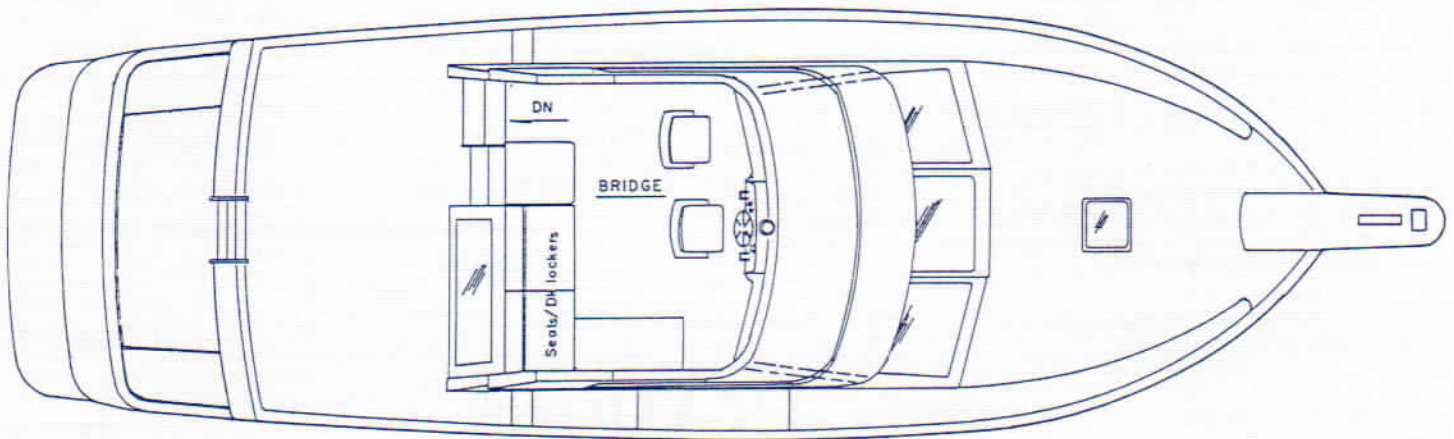
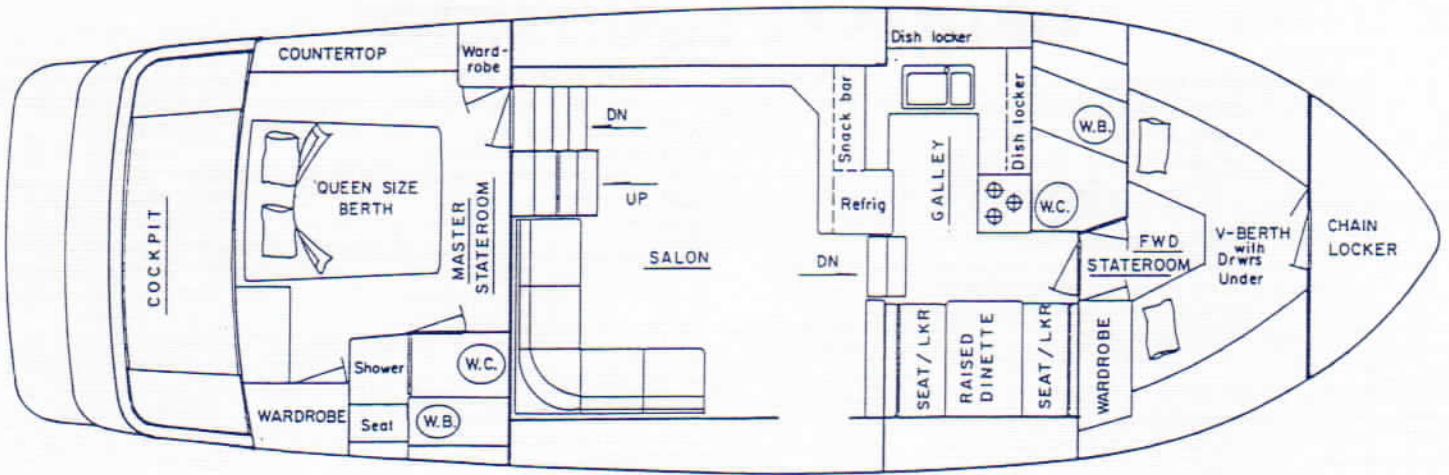
PROPULSION

STANDARD:

Twin 300hp, 3116 Caterpillar Diesel (FWC)

OPTIONAL:

Twin 7.4L, 340hp Mercruiser, Gas (FWC)
 Twin 8.2L, 400hp Mercruiser, Gas (FWC)
 Twin 300hp Volvo Diesel (FWC)
 Twin 380hp Volvo Diesel (FWC)
 Twin 430hp Volvo Diesel (FWC)
 Twin 320hp Caterpillar Diesel (3208TA) (FWC)
 Twin 375hp Caterpillar Diesel (3208TA) (FWC)
 Twin 425hp Caterpillar Diesel (3208TA) (FWC)
 Twin 250hp Detroit, Diesel (8.2T) (FWC)
 Twin 300hp Detroit, Diesel (8.2TI) (FWC)
 Twin 400hp Detroit, Diesel (6V53TI) (FWC)
 Twin 320hp MTU, Diesel (6RO99TB90) (FWC)
 Twin 330hp Luger, Diesel (L6108A) (FWC)
 Twin 300hp Cummins, Diesel (6BTA) (FWC)
 Twin 400hp Cummins, Diesel (6CTA) (FWC)



Tollycraft Yachts Corporation reserves the right to make changes in standard or optional equipment at any time without notice or obligation to alter models previously manufactured. No changes in equipment will be accepted after the yacht has been placed into production. All yachts are considered in production four weeks before hull lay-up. (Changes requested after this time will be accomplished after yacht's completion and charged out at time and material cost.) Tollycraft reserves the right to refuse any change due to excessive tear-out and rebuild time. All Tollycraft yachts meet the requirements of the NMMA Yachts Certification Program and carry a 15-year transferable hull warranty. For a copy of Tollycraft's complete warranty, contact your nearest Tollycraft dealer.

Tollycraft Yachts Corporation
 2200 Clinton Ave.
 Kelso, Washington 98626
 Rev. 08/92

BASE YACHT PRICE	\$ _____
OPTIONS	\$ _____
SUBTOTAL	\$ _____
LESS DEPOSIT	\$ _____
BALANCE DUE	\$ _____