

  
**Tollycraft**

1979



## ESPECIALLY FOR YOU...

Tollycraft builds a complete line of superb cruising yachts from 25 to 48 feet.

A Tolly brings to mind, the usual notions of recreation and sport, while saying several important things about her owner.

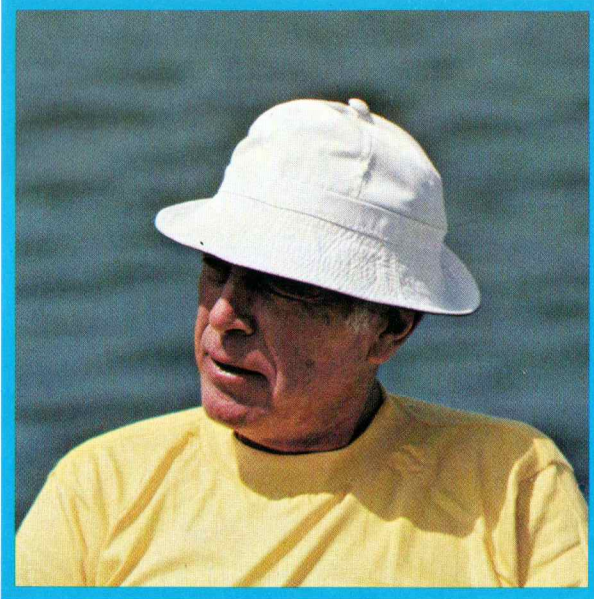
The Tolly owner is more concerned with value than with low cost. He expects and receives from his Tolly, the same patient attention to basics that he puts into his other affairs. He commands attention by his seemingly effortless accomplishments. He knows his world and what is important. Moreover, he knows how to say he knows—quietly, yet with authority.

A Tolly has become an ultimate statement of what a truly fine yacht must be. During the past 30 years Tollys have earned a well deserved reputation for strength, craftsmanship and elegance. Likewise, Tolly owners enjoy the recognition as being knowledgeable and mature yachtsmen.

A Tolly is designed and constructed with you, the owner, in mind. Each is equipped and appointed for lasting comfort, safety, and ease of maintenance. The strength, durability and comfort of a Tolly are major factors in prompting the Tolly owner to purchase a larger Tolly, when his family's desires dictate that a larger craft is needed.

A Tolly is more than an acquisition. She is a personal reflection of and about her owner.





### THE TOLLY OWNER

The Tolly owner combines yachting pleasure with sound investment practices. He has been boating for an average of over 16 years, when he purchases his first Tolly. He has been boating for almost 19 years when he purchases his second Tolly. Over fifty percent of the Tolly owners and their families are active members of a yacht club or cruising club. Having been in boating and enjoying its rewards for all these years, the yachtsman has reached a plateau with each new Tolly he acquires.

His own observations agree with those of his knowledgeable friends and associates: Tollycraft integrity serves a skipper well during their years together. Based on a recent survey of Tollycraft owners, 68 percent of new Tolly owners, bought their first Tolly because of the Tollycraft reputation and tradition of superior design and quality construction, while 31 percent bought their new Tolly, because of the valued recommendation of a friend and fellow boater.

A Tolly is her owner's statement of his commitment and knowledge of true yachting value.



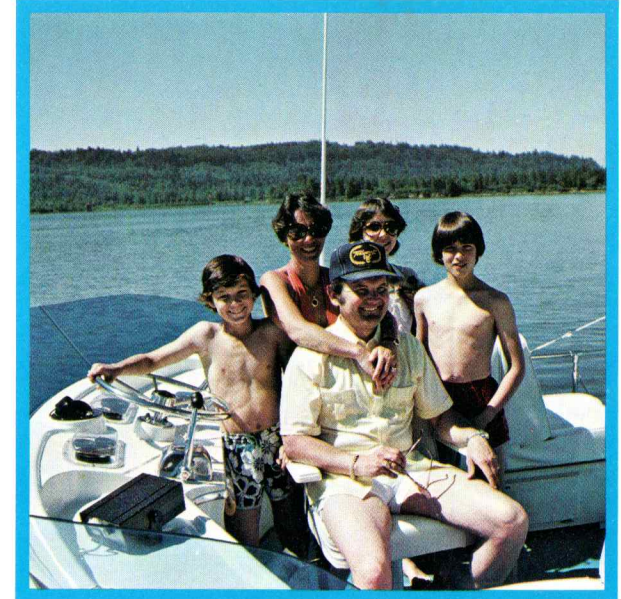
### A VALUED INVESTMENT

A Tolly is a remarkable investment. Yachtsmen appreciate and desire the fine wood interiors, accented with beautiful, hand rubbed teak. Structural wood cabinetry is joined with both glue and screws, and is reinforced with mahogany cleat stock. Tollycraft does not use press board or particle board in the construction of its interior cabins.

Any Tolly cabin is a marvel of warmth and efficiency as well as being a structural part of this rugged yacht. This structural integrity is made possible by Tollycraft's unitized construction process, in which the hull is bonded to the cabin interior unit to form an incredibly sound and solid cruiser.

A Tolly features such basic ideas as large diameter stainless steel propellor shafts, oversize bronze rudders for easy maneuvering, heavy duty struts, dual control stations-fully instrumented, and fresh water cooling on all inboard engines as standard equipment. These basic features plus many others, give the Tolly owner confidence and an assurance of value.

Tollycraft is proud of its craftsmen. The meticulous joiner work, the precise fittings of moldings, the hand detailing and luxurious upholstery are all reflections of skilled craftsmen. Tollycraft takes time to build a cruiser, and that's pride in one's product. This is one major reason why Tolly owners realize such a great return of their invested dollar, when it is time to trade up.



### A FAMILY AFFAIR

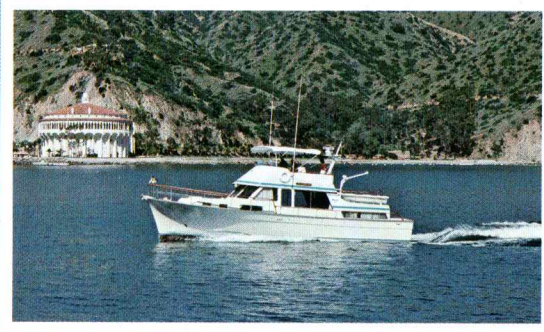
Cruising aboard a Tolly is very much a family affair, and Tollycraft builds its yachts for almost any size family. All models offer generous space for entertaining or quiet conversation, elbow room at meal time and sleeping accommodations you can roll over in.

Tollycraft does not compromise space for storage, interior movement or convenience. The galleys are spacious and efficient, dinettes and settees are large, soft and natural, even the head compartments all have room for changing and showering.

A Tolly is built to take her owner and his family out and return with total comfort, safety and peace of mind. Each model is engineered individually and is powered for efficiency and optimum performance.

Whether you are interested in exploring new waters, fishing, or entertaining at anchor, a Tolly is a multipurpose family home away from home.

There are eight new Tollycraft models available, one just right for your family's needs.

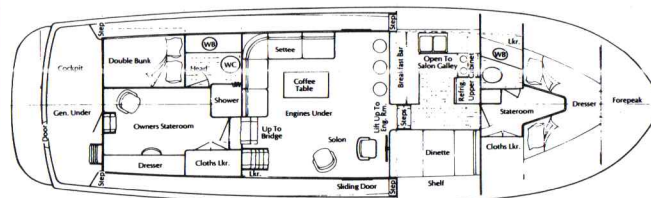
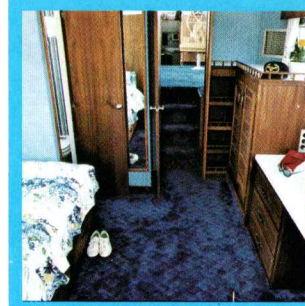
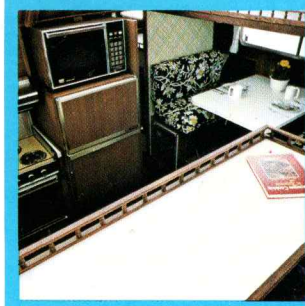


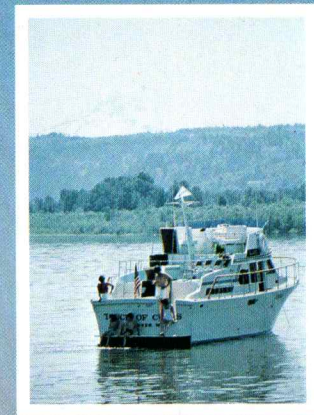
## 48' MOTOR YACHT

Regal elegance and superb performance highlight this queen of the Tollycraft fleet. The owner of this beautiful and dependable yacht, commands a sleek, powerful craft, built to tough, demanding standards, for long range ocean cruising.

**Features include:** Power: Twin 3208 Cat Diesels—or Twin 6-71 G. M. Diesels —12.5 K.W. diesel generator — 600 gallon fuel capacity — Two private staterooms — Two heads with showers — Separate dinette and galley — Hand-rubbed interior teak paneling — Direct access from bridge to salon— Transom door and transom step — Wide side deck — Teak handrails and toe rails — Heavy duty welded aluminum radar mast— Deck box with cushion— Trash compactor.

See page 13 for complete specifications  
See page 15 for warranty statement



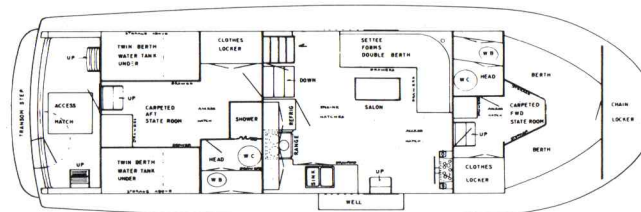
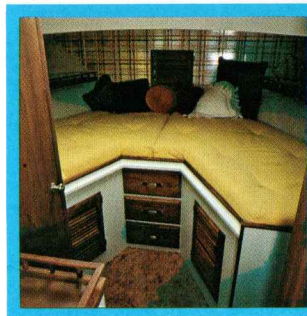


## 40' TRI-CABIN

The proven performance of this well-engineered, efficient tri-cabin cruiser, its handling and cruising characteristics in waters around the world, together with the luxury and comfort of life aboard, make it a prideful choice for the experienced and discriminating yachtsman.

**Features include:** Power: Twin 330 Mercs. FWC—Twin 3208 Cat Diesels (optional)—440 gallon fuel capacity—Two private staterooms—Two private heads with showers—Large galley in salon—Hand rubbed teak cabinetry—Direct access from bridge to salon—Transom door and transom step—Wide side decks—Teak handrails and toe rails—Folding mast—Deck box with cushion.

See page 13 for complete specifications  
See page 15 for warranty statement



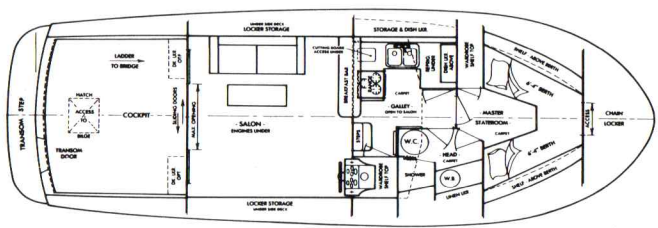
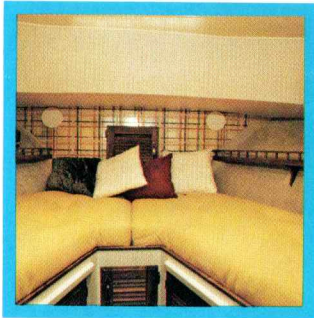
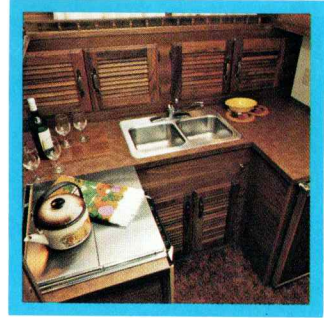


## 37' CONVERTIBLE SEDAN

A spectacular, tough performing blue water cruiser for extended cruising or fishing, with two distinct interior layouts; an upper galley plan, which offers two staterooms forward and sleeps six, or a plan which sleeps four, featuring an open galley forward, one stateroom and a wide open salon for entertaining. A lower control station and sliding glass cabin to cockpit doors are standard with either plan.

**Features include:** Power: Twin 330 Mercs. F.W.C. — Twin 3208 Cat Diesels (optional) — Seating for five on the command bridge — Transom Door and Transom Step — Forward stateroom with V-berth filler pad — Head with separate stall shower — Settee — High Low table — Hand rubbed teak cabinetry — Large uncluttered cockpit — Teak toe rails and cockpit cowlings — Exterior weather proof storage areas.

See page 13 for complete specifications  
See page 15 for warranty statement



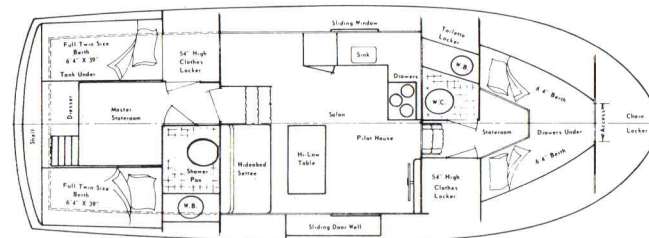
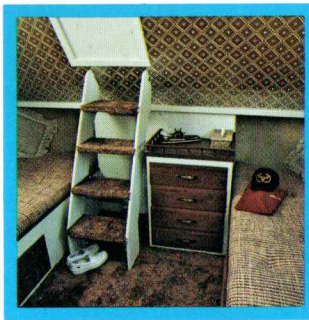


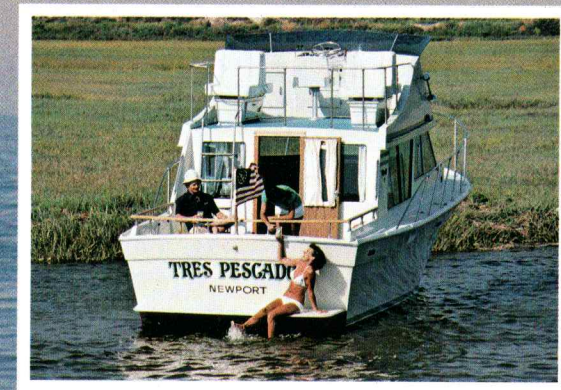
## 34' TRI-CABIN

A dependable three-cabin family cruiser that offers both exterior and interior spaciousness not found on any cruiser of its size or class. This amazing design offers luxury, roominess, privacy and sea kindness; all for an affordable price.

**Features include:** Power: Twin 255 Mercs. F.W.C. — Twin Volvo diesels (optional) — Large command bridge with seating for five — Master stateroom with twin beds (double bed optional) — Forward stateroom with V-berth filler pad — Two heads and two showers — Large salon with galley — Teak accented cabinetry — Settee — High Low table — Direct access to salon and master stateroom — Expansive aft. sun deck — Wide side decks.

See page 13 for complete specifications  
See page 15 for warranty statement



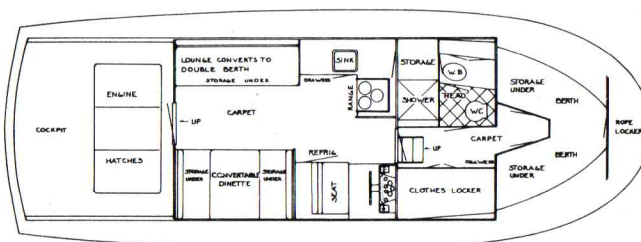
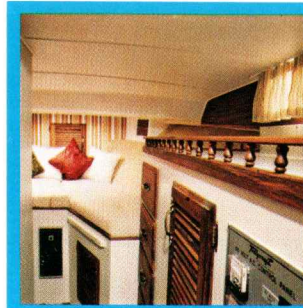


## 34' SEDAN

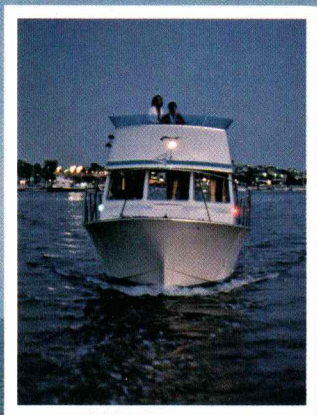
This offshore double cabin sedan offers you everything you want in a family sedan cruiser. Complete private stateroom forward, spacious salon, large cockpit area and huge command bridge, help make this modified deep-V sedan, a cruising yacht to excite family and guests.

**Features include:** Power: Twin 255 Mercs. F.W.C. — Twin Volvo diesels (optional) — Command bridge with seating for five — Luxurious forward stateroom — Head with separate stall shower — Convertible dinette — Settee — 6' 4" main cabin headroom — Teak accented cabinetry — Wide side decks — Teak taff rail around cockpit.

See page 13 for complete specifications  
See page 15 for warranty statement





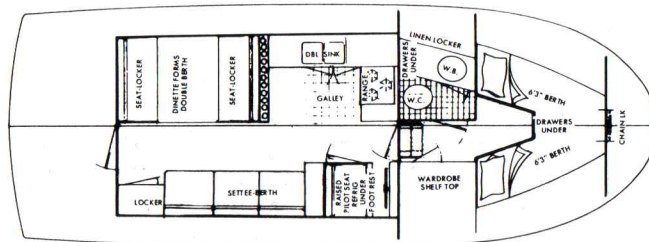
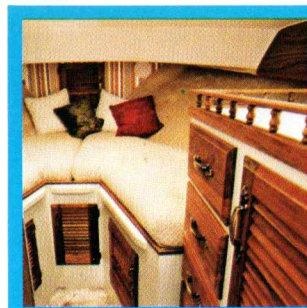
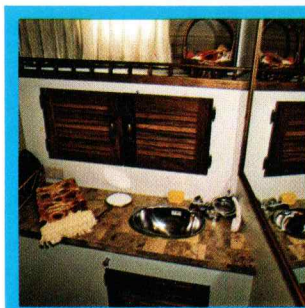


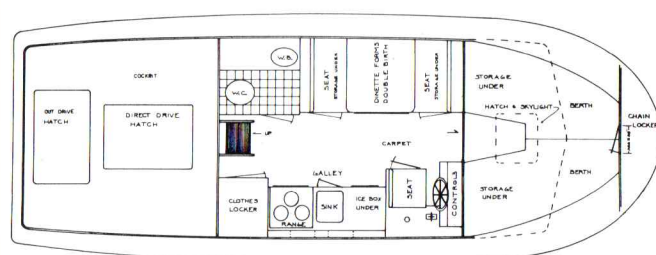
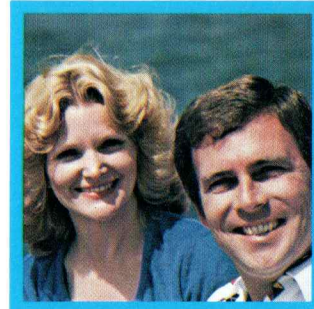
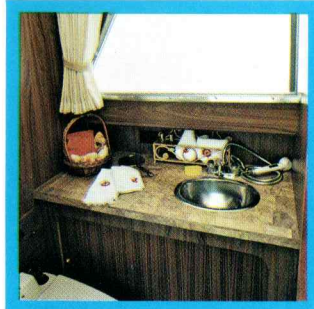
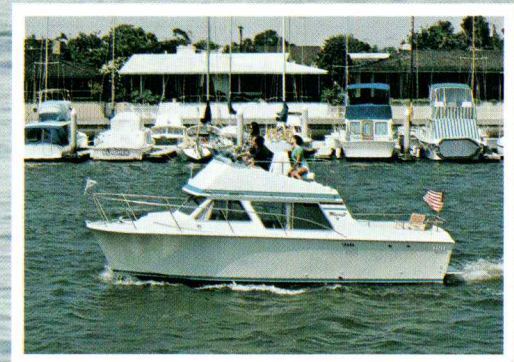
## 30' SEDAN

Just one look inside will convince you that the Tolly 30' is designed and built to be the roomiest 30' on today's cruiser market. A grand all around performer, fast yet economical, stable and dry. A dependable 30' with the interior space of a 35'. A Tolly in every sense of the word; durable, dependable, and designed for leisure living at its best.

**Features include:** Power: Twin 255 Mercs. F.W.C. — Twin Volvo diesels (optional) — Large command bridge with seating for five — Teak accented cabinetry — Large forward stateroom — Head with shower — Convertible dinette — Settee — Transom door and transom step — Large galley in salon — Wide side decks.

See page 13 for complete specifications  
See page 15 for warranty statement





## 26' SEDAN

**THE ALL-TIME BEST SELLING CRUISER IN TOLLYCRAFT'S HISTORY!**

Tollycraft's tough little-big cruiser, the 26' Sedan offers outstanding family comfort and a hull specifically designed for cruising comfort and safety. Incorporated into the 26' are the same famous design and construction features found in all larger Tolly's. She's a family cruiser for the young and old alike.

**Features include:** Power: 255 Merc V-drive F.W.C. — Twin 130 inboards F.W.C. (optional) — Single or twin Merc. I/O (optional) — Single Volvo Diesel I/O or V-Drive (optional) — Large command bridge with seating for five — 10 foot beam — Large cockpit with flush access hatches — Teak accented cabinetry — Convertible dinette — Large galley — 12 V/120 V refrigerator — Lower control station — Hot and cold pressure water — Head with shower — V-berth area with filler pad — Generous storage throughout.

See page 13 for complete specifications  
See page 15 for warranty statement

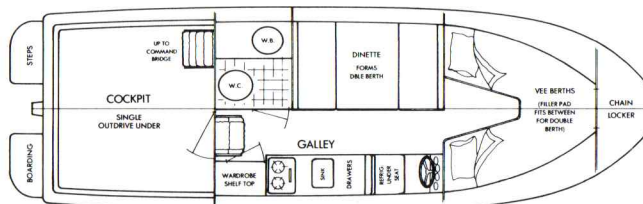
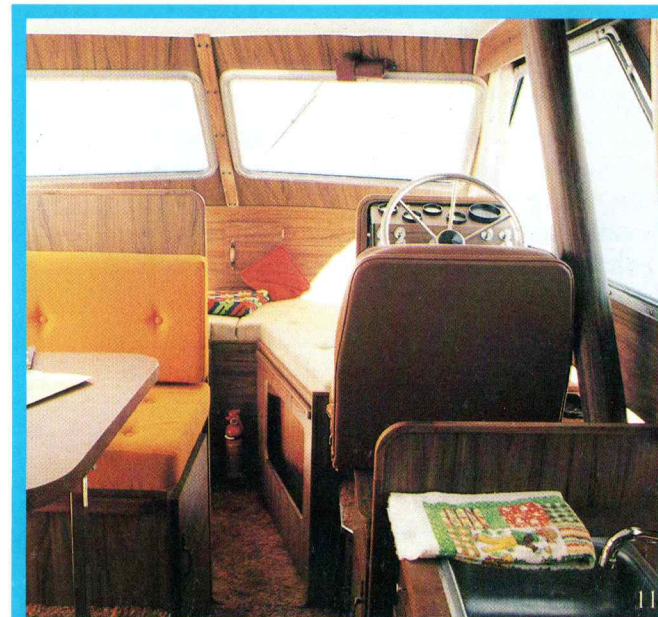
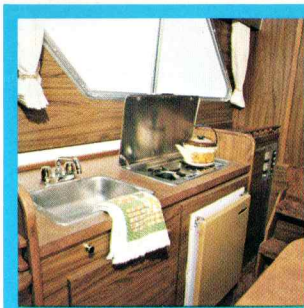
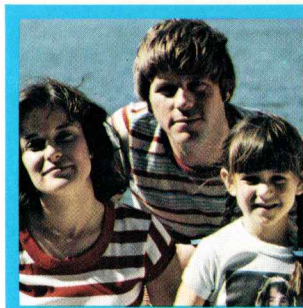


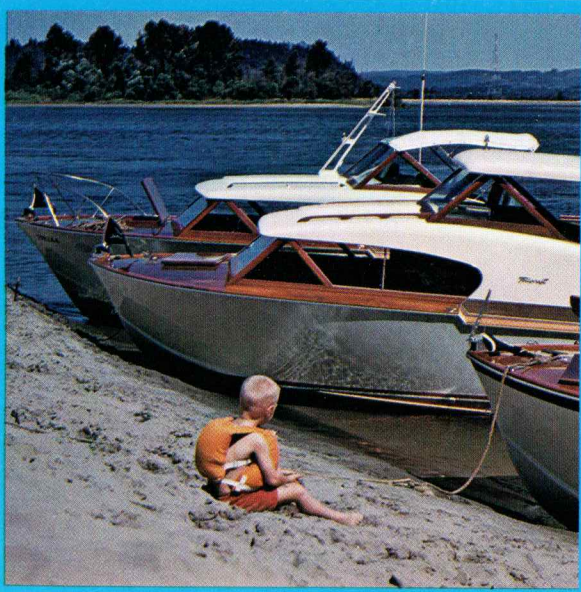
## 25' SEDAN

The new 25' Sedan offers the fine quality features of a larger Tolly, plus accommodations to sleep four, a dinette that seats four, and the convenience of being trailerable. As with all Tolly's, she offers swift, smooth performance coupled with interior roominess and elegance. For lake cruising or blue water cruising, here is a Tolly to take along with you.

**Features include:** Power: 255 H. P. I/O—130 H. P. Volvo diesel I/O (optional)—Large command bridge—Dual steering stations—8 foot beam—Large cockpit with flush access hatches—Walk around side decks—1" Stainless steel exterior railings—Convertible dinette—Large galley—12 V/120V refrigerator—Hot and cold pressure water—Head with shower—V-berth area with filler pad—Drapes—Screens on opening windows.

See page 13 for complete specifications  
See page 15 for warranty statement





## WHAT DREAMS ARE MADE OF

Something about a Tolly caught this youngster's eye many years ago. Now he's old enough to have his own Tolly. Without presuming on long ago thoughts, we suggest that the same family strengths imparted to a youngster are perceived in a Tolly.

Its uncompromising design and craftsmanship, its longevity and continual association with astute owners, all have an effect on the thoughtful observer. For over 30 years Tollycraft has insisted that its yachts meet or exceed the dreams of those who would own a handcrafted cruiser.

Tollycraft's success is mirrored in those who contemplate a Tolly before and after a day on the water. There is a quality about a Tolly which triggers imagination. This excitement has bonded generations of yacht owners, and will continue to do so in the future.

Tollycraft cruisers have standard features just not found in ordinary boats. The tried and true hull on a Tolly, is one major reason why knowing yachtsmen prefer Tollys. The hull is designed for a level attitude on and off plane. It is heavily built from many layers of fiberglass, reinforced even stronger in stress areas.



Within the hull, full-length fiberglass stringers, filled with high density foam, are glassed to the inside of the hull bottom. These integral stringers add extra stiffness to the hull for combatting rough water shock and are the structural members to which the engines and cabin liners are fastened.

All Tollycraft decks and cabin tops are made as a one-piece unit. This structural part of the cruiser is also constructed of fiberglass and additionally reinforced with end-grain balsa wood. This is why a Tolly deck feels so firm underfoot.

Every Tolly has a molded in keel. This provides additional strength as well as adding directional stability while under way.

Shaft logs are of heavy fiberglass tubing, permanently bonded to the hull. Every inboard model is equipped with an electrolysis bonding system which grounds all underwater gear and fittings to a sacrificial zinc plate on the transom.

Cabin windows are made of tinted safety glass, and are large enough to see out of while sitting down, and also to create a comfortable spaciousness, enhanced with natural light and more than ample cabin headroom.

All deck railing and fittings are corrosion resistant stainless steel, oversized and bolted *through* the deck. Unmatched dedication to basics puts a Tolly in a class of its own.

# THE LARGEST LIST OF STANDARD EQUIPMENT EVER OFFERED BY TOLLYCRAFT!

**Tollycraft challenges you to compare this list of standard equipment with those offered by other manufacturers. Compare the totally equipped price, and you will know why we are convinced that your best value in the cruiser market today is a Tolly.**

SPECIFICATIONS	48 MOTOR YACHT	40 TRI-CABIN	37 CONVERTIBLE SEDAN	34 TRI-CABIN	34 SEDAN	30 SEDAN	26 SEDAN	25 SEDAN
Center Line	48'2"	40'2"	37'4"	34'0"	33'7"	29'11"	26'8"	25'1"
Beam	15'2"	13'4"	13'2"	12'6"	12'3"	11'9"	10'0"	8'0"
Freeboard Forward	72"	79"	72"	72"	69"	53"	50"	50"
Freeboard Aft	51"	54"	50"	56"	45"	50"	41"	36"
Height Above Waterline	14'0"	13'4"	12'6"	12'6"	12'2"	13'2"	10'0"	9'0"
Draft	44"	38"	36"	34"	32"	30"	34"	34"
Fuel Capacity (gal.)	600	440	300	200	200	182	140	98
Water Capacity (gal.)	188	128	128	74	64	46	33	33
Weight (average displacement) (lbs.)	42,000	28,000	22,000	17,000	15,000	13,500	9,000	
Sleeping Accommodations	6 to 8	6	4 to 6	6	6	6	4	4
<b>MECHANICAL EQUIPMENT</b>								
*Twin 3208 Cat Diesel (FWC)	X	O	O					
*Twin 6-71 G. M. Diesel (FWC)	X							
Twin 330 Mercruiser (FWC)		X	X					
Twin 255 Mercruiser (FWC)				X	X	X		
Single 255 Mercruiser (FWC)							X	
Single 255 Volvo I/O								X
Alarm System Audio, Temp., Oil	X	X	X	X	X	X	X	X
Battery(s) H. D., 12 Volt	4	4	3	2	2	2	1	1
Battery Switch(es), Vapor Proof	X	X	X	X	X	X	O	O
Bearings, Rubber, Prop. Shaft	X	X	X	X	X	X	X	X
Belt Guards(s), Engine(s)	X	X	X	X	X	X	X	X
Bilge Blower(s), 12 Volt	3	2	2	1	1	1	1	1
Bilge Pump(s), 12 Volt	4	3	3	3	2	3	1	1
Circuits, Individually Fused, Color Coded	X	X	X	X	X	X	X	X
Compass(es)	2	2	2	2	2	2	2	1
Electrolysis Bonding System	X	X	X	X	X	X	X	X
Engine Hour Meter(s)	2	2	2	2	2	2	1	1
Full Instrumentation, Both Stations	X	X	X	X	X	X	X	X
Generator, 12.5 K. W., Diesel	X	O	O					
Lights, Engine Room, 12 Volt	X	X	X	X		X		
Mounts, Engine(s), Adjustable	X	X	X	X	X	X	X	X
Mufflers	X	X	X	X	X	X	X	X
Oil Change Pump System, 12 Volt	X	X	X	O	O	O	O	O
Stainless Steel Prop Shaft(s), H. D.	2"	1 1/2"	1 1/2"	1 1/2"	1 1/2"	1 1/2"	1 1/2"	1 1/2"
Steering, Hydraulic	X	X	X	X	X	X	X	X
Through Hull Fittings, Bronze Below								
Waterline, Nylon Above	X	X	X	X	X	X	X	X
Transmission, Hydraulic	X	X	X	X	X	X	X	X
Underwater Gear, High Test Bronze	X	X	X	X	X	X	X	X
120 Volt Shorepower, w/Outlets	X	X	X	X	X	X	X	X
50' Shorepower Cord(s)	2	1	1	1	1	1	1	1
120 Volt Circuit Breaker Panel	X	X	X	X	X	X	X	X
120 Volt Supplementary Breaker Panel	X							
12 Volt Circuit Breaker Panel	X	X	X					
12 Galton Hot Water Heater	X	X	X	X	X	X	X	X
<b>EXTERIOR EQUIPMENT</b>								
Anchor, w/Rode	X	X	X	X	X	X	X	X
Anchor Windlass, 12 Volt	X	O	O	O	O	O	O	O
Bell Ships	X	X	X	X	X	X	X	X
Bow Eye							O	X

	48 MOTOR YACHT	40 TRI-CABIN	37 CONVERTIBLE SEDAN	34 TRI-CABIN	34 SEDAN	30 SEDAN	26 SEDAN	25 SEDAN
Command Bridge, w/Control Station	X	X	X	X	X	X	X	X
Command Bridge Seats, w/Covers	X	X	X	X	X	X	X	X
Cover, Windshield (cabin)	X	X	X	X	X	X	X	X
Deck Box, w/Cushion	X	X	O	O				
Deck Hardware, Stainless Steel	X	X	X	X	X	X	X	X
Ensign Staff, Teak	X	X	X	X	X	X	X	X
Handrails, 1" Stainless Steel	X	X	X	X	X	X	X	X
Handrails, Teak	X	X			X			
Horn, Freon, 12 Volt	X	X	X					
Horn, 12 Volt				X	X	X	X	X
Hullside Water Inlet	X							
Ladders, Cockpit, Teak		X	X		X	X		
Ladders, Deck, 1" Stainless Steel	X	X	X	X	X	X	X	X
Life Ring Buoys, (2)	X							
Light, Anchor, 12 Volt	X	X	X	X	X	X	X	X
Lights, Dash, 12 Volt, Command Bridge	X	X	X	X	X	X	X	X
Lights, International Running, 12 Volt	X	X	X	X	X	X	X	X
Mast Aluminum	X							
Mast Wood		X		O				
Mooring Lines, (3)	X	X	X	X	X	X	X	X
Toe Rails, Teak	X	X	X					
Tollycraft Pennant, w/Bow Staff	X	X	X	X	X	X	X	X
Transom Door	X	X	X			X		
Transom Step	X	X	X	X	X	X	X	O
Venturi Windshield, Command Bridge	X	X	X	X	X	X	X	X
Window Screens On Opening Windows	X	X	X	X	X	X	X	X
Windows Tinted	X	X	X	X	X	X	X	X
Windshield Wiper(s)	3	3	3	3	3	3	2	1
<b>INTERIOR EQUIPMENT</b>								
Breakfast Bar	X		X					
Cabinet, Dish And/Or Glass	X	X	X	X		X		
Cabinet, Liquor	X	X						
Carpet, Cabin Sole	X	X	X	X	X	X	X	X
Carpet, Interior Hullside	X	X	X	X	X	X	X	X
Carpet Pad, All Cabins	X	X	X	X	X	X	X	X
Chain Locker In Forepeak, w/Door	X	X	X	X	X	X	X	X
Decor, Color Coordinated	X	X	X	X	X	X	X	X
Dinette, Convertible	X				X	X	X	X
Doors, Privacy, Fore And/Or Aft	X	X	X	X	X	X		
Draperies	X	X	X	X	X	X	X	X
Drawers, Wood	X	X	X	X	X	X	X	X
Fire Extinguishers	6	4	3	3	3	3	2	2
Formica Countertops	X	X	X	X	X	X	X	X
Forward Cabin Hatch, w/Screen	X	X	X	X	X	X	X	X
Heads, Self Contained, 12 Volt	2	2	1	2	1	1	1	1
Headliner, Cabin, Perforated Vinyl	X	X	X	X	X	X	X	X
Headliner, V-Berth Area, Carpet							X	X
High-Low Table	O	X	X	X				
Insulation, Engine Room(s)	X	X	X	X		X		
Interior Cabinetry, Teak	X	X	X					
Interior Cabinetry, Teak Accented	X	X	X	X	X	X	X	X

	48 MOTOR YACHT	40 TRI-CABIN	37 CONVERTIBLE SEDAN	34 TRI-CABIN	34 SEDAN	30 SEDAN	26 SEDAN	25 SEDAN
Ladders, Cabin, Teak	X	X	X	X	X	X	X	X
Lights, Cabin, 12 Volt/120 Volt	X	X	X	X	X	X	X	X
Lights, Cabin, 12 Volt				X	X	X	X	X
Lights, Dash, 12 Volt, Lower Control Station	X	X	X	X	X	X	X	X
Locker(s), Hanging	X	X	X	X	X	X	X	X
Lower Control Station	X	X	X	X	X	X	X	X
Mattresses And Cushions, Polyfoam And Dacron	X	X	X	X	X	X	X	X
Mirror(s)	X	X	X	X	X	X	X	X
Owner's Manual	X	X	X	X	X	X	X	X
Pastry Board	X	X	X	X	X	X	X	X
Port Lights, w/Screens	X	X	X	X	X	X	X	X
Power Ventilator, Head(s)	X	O	O	O	O	O	O	O
Propane Tank, w/Regulator		O	X	X	X	X	X	X
Range, 3 Burner, w/Oven, 120 Volt	X	X	O	O	O	O	O	O
Range, 3 Burner, w/Oven, Propane		O	X	X	X	X	X	X
Range, 2 Burner, Propane								X
Range Cover	X	X	X	X	X	X	X	X
Range Hood, w/Vent And Light, 12 Volt	X	X						
Refrigerator, 12 Volt/120 Volt	X	X	X	X	X	X	X	X
Settee, Convertible	O	X	X	X	X	X		
Showers(s), w/Drain Pump(s), 12 Volt	2	2	1	2	1	1	1	1
Sinks, Stainless Steel Or Marbleized	X	X	X	X	X	X	X	X
Sliding Salon Door, To Cockpit			X					
Trash Compactor, 120 Volt	X	O						
V-Berth Filler Pad		X	X	X	X	X	X	X
Water System, Pressure Hot And Cold	X	X	X	X	X	X	X	X

\*Price based on differential in engine prices.

Standard Equipment = X Optional Equipment = O Not Available (Blank)

Wherever possible, cruisers are shown with standard equipment. However, some cruisers are shown with additional optional equipment. See your dealer for complete listings of standard equipment and options available. Specifications contained in this brochure are based on the latest production information available at time of publication. The right is reserved to make changes at any time without notice in prices, color, materials, equipment, specifications and models. All cruiser weights listed are estimated weights.

Printed in U.S.A.



## PUT YOURSELF IN THIS PICTURE

The elegance and grace of a Tolly either at rest or while under way, reflects the overall attention to detail built into every model.

Interior spaces reflect this elegance naturally, evidenced by the richness of hand rubbed teak woodwork, and the spaciousness of cabin layouts. Tolly owners prefer these spacious areas for their families and friends. They deserve a cruiser tailored to their desires, not their compromises. Tollycraft has always designed cruisers for an owner's needs, not for ease of production.

Tollycraft insists on the warmth of a wood interior, including bulkheads, wardrobe lockers, cabinets, drawers with sea locks, and a myriad of teak cap rails and sea rails.

Felt but never seen is the luxury of high density foam cushions and bunks wrapped with Dacron for extra softness. Warm durable decorator fabrics are color coordinated on each model. Plush pile carpeting with foam padding is placed generously throughout each cabin.

Galleys are equipped and decorated like a kitchen ashore. Complete cooking and refrigeration systems are standard. The central location of the galley allows the chef to remain a member of the party while preparing meals, or just cleaning up.

Hot and cold pressure water systems are standard on all Tollys. Every system includes a 12 gallon hot water heater, plumbed entirely with copper tubing. A generous amount of fresh water onboard gives the owner and crew that extra capacity needed for extended cruising.

Interior styling and comfort is enhanced by bronze hardware, acoustic headliners, screened windows, decorator curtains and draperies with valances. Complete shorepower systems, and many other features found only in fine yachts, add to the pleasures of cruising a Tolly.

A Tolly has been painstakingly designed, constructed and brought to maturity. She offers you years of satisfaction and value.

Tollycraft is anxious to build your next cruising yacht and have you join our family of experienced, knowledgeable, and satisfied cruising families from around the world.

You have sampled several boats and have tasted the pleasure of cruising. You know what comfort, command and safety afloat is all about. You're ready for a great cruising yacht, you're ready for a Tolly.



## TOLLYCRAFT LIMITED WARRANTY

- 1) Tollycraft products are warranted by Tollycraft Corporation to be free from defects in material and/or workmanship under normal use and service for a period of one (1) year or two hundred (200) operating hours, from date of delivery of the boat, whichever occurs first, to the first consumer and any subsequent consumers who have ownership within this warranty period.
- 2) Warranty coverage can be activated only by the return to Tollycraft of the warranty registration card properly signed and filled out by the first consumer within thirty (30) days of date of delivery of the boat. In addition to activating the warranty, this card provides information required by the Federal Boat Safety Act.
- 3) The following items are not warranted by Tollycraft Corporation:
  - A) Propulsion engines, generator sets, electronic equipment, air conditioning equipment, and other equipment Tollycraft purchases as an assembly. These items are warranted by the company manufacturing these items and this warranty will be passed on to the consumer wherever possible;
  - B) Paints, varnishes, glass, gel coat, chrome plating and fabrics, because of the varying effects resulting from different use and climatic conditions;
  - C) Accessories not installed by Tollycraft;
  - D) Boats and accessories used for racing or any type of commercial application;
  - E) Any published or announced catalog performance characteristics of speed, fuel and oil consumption, and static and dynamic attitude in the water;
  - F) Any boat or part which has been altered so as to impair the original characteristics;
  - G) Transportation of boat or part to or from an authorized service location for warranty repairs;
  - H) Defects caused by normal wear and tear, abuse, or any failure due to lack of proper maintenance.
- 4) The obligation of Tollycraft under this warranty is limited to repairing or replacing at Tollycraft's option, any part during the warranty period which is proven to Tollycraft's satisfaction that there was a defect in material or workmanship.
- 5) Tollycraft or its dealers shall not be liable, under any circumstances, for incidental, consequential or indirect damages caused by defects in materials or workmanship or any delay in the repair or replacement thereof.
- 6) The consumer shall follow these steps in order to obtain performance by Tollycraft of the terms of this Limited Warranty:
  - A) The warranty registration card must be on file at Tollycraft;
  - B) The defects claimed must be described in writing by the consumer on Owner's Warranty Claim Request Form, available at your authorized Tollycraft dealership, or in your Tollycraft Owner's Manual, and submitted to your dealer within thirty (30) days of discovery of the defect.
  - C) Contact your authorized Tollycraft dealer for instructions as to delivery of boat or part for warranty repair. Cost of transportation is the sole responsibility of the consumer;
  - D) The Dealer will contact the Tollycraft Factory Service Manager to determine which of the following steps will be taken:
    1. Authorize repair or replacement of defective items under the terms of this "Limited Warranty";
    2. Reject the claim if it is not covered by this "Limited Warranty";
    3. Will arrange for a factory representative to make an inspection to determine whether or not the defect is covered by this "Limited Warranty" (within a reasonable length of time after inspection is made, the dealer will be notified of the determination).
  - E) Any warranty repairs or replacements made under the terms of this "Limited Warranty" will be completed within a reasonable length of time, depending on the complexity of the problem, by the authorized Tollycraft dealer, a subcontractor, an authorized repair facility for accessories or other components not of Tollycraft manufacture, or by Tollycraft at no cost to the consumer.
  - F) Consumers must negotiate all warranty claims through the authorized dealer and NOT with the Tollycraft Factory Service Department.
- 7) The Dealer is not an agent for Tollycraft and Tollycraft does not authorize the dealer or any other person to assume any liability in connection with this "Limited Warranty" or any other liability or expense incurred in the replacement or repairs of its products other than those expressly authorized herein.
- 8) Implied warranties including merchantability and fitness for a particular purpose are limited to the period of warranty set forth above and to the extent permitted by law only and all other implied warranties are excluded.
- 9) There is no other express warranty.
- 10) Legal remedies are available for breach of the foregoing "Limited Warranty". If the consumer of a Tollycraft boat is concerned with such remedies, it is advised that an attorney be consulted.

A copy of this Limited Warranty may be obtained on request by writing to Tollycraft Corporation, Kelso, Washington 98626.

(Prepared in Accordance with The Magnuson-Moss Warranty Improvement Act, U.S. Public Law 93-647.)

**Tollycraft**

Kelso, Washington 98626

**Dolphin**  **INC.**  
**MARINA**

**DOLPHIN MARINA**  
115 First Avenue  
Washougal, Washington 98671  
(206) 835-2157

