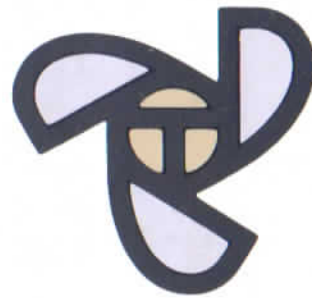




TOLLYCRAFT





Compare with any boat afloat—hand craftsmanship makes Tollycraft superior



HIS kind of pleasure



HER kind of leisure



RAFT IS BUILT FOR CONVENIENCE

Boats are built with the *woman* in mind... give freedom and relaxation to the woman to enjoy herself and escape from care.

Being at a Tollycraft is a pleasure, with the sleek, superstructures... clean, sweeping hulls... wide, non-skid side decks and safety railings... lots of chrome and mahogany everywhere. Life is pure delight, with thoughtful, luxurious touches everywhere. Tollycraft... special conveniences that add much in liveability.

Each color coordinate bestows your individuality into every stunningly beautiful cabin and... interiors warm with mahogany panelling... large glass windows that slide easily... deep pile carpets... French-pleated draperies... gorgeous fabrics in warm or cool tones... all charmingly decorator harmonized.

Sleeping quarters in every Tollycraft cruiser are arranged for maximum comfort, privacy and versatility, from deep foam padded V-bunks with filler pad for converting into roomy double bunk... versatile dinettes

convert quickly and easily into comfortable bunks in bunks or inner-spring double bed in private

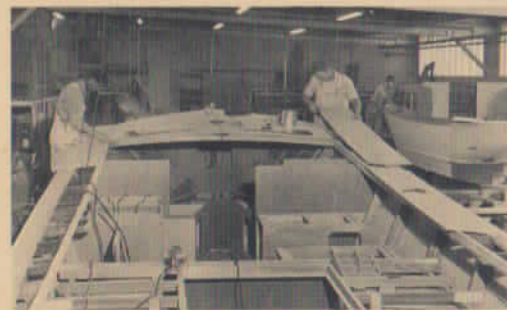
Every Tollycraft cruiser has the convenience of a head, from the toilet to luxurious enclosed heads with tiled floors, large mirrors, towel racks, storage and molded shower stalls.



TOLLYCRAFT IS BUILT FOR PERFORMANCE

Tollycraft boats are built to give the higher performance, low-cost maintenance and life-long service every man should expect when making an investment in boating pleasure. Your critical attention to the smallest construction detail is invited... you'll discover Tollycraft gives you better craftsmanship... better quality... better handling capability... all-around, much more boat for your money!

The remarkable CONOLIFT hull immediately makes your Tollycraft boat superior, gives you perfect handling in any kind of water. Featuring a modified deep-V design, the CONOLIFT hull gives you less noise and slapping, more buoyancy and smooth, level riding qualities.



Custom-specified premium marine plywood, exceeding Grade AA standards, goes into every Tollycraft hull and is equal in impact and racking strength to twice its thickness in a planked boat. A Tollycraft marine plywood hull with its higher strength-to-weight ratio, pound-for-pound, is stronger than steel!

Tollycraft's fiberglass overlay puts *lightness* and *speed* into every boat, makes it possible to use less horsepower to attain cruising speed... gives *greater economy!* The fiberglass overlay shields the entire Tollycraft hull, makes it impervious to leaks because there are no seams, protects it from damage by marine borers.

A Tollycraft hull *stays* lighter, too, because there is absolutely no water absorption. With Tollycraft, there is no possibility of moisture penetrating the multiple veneer layers and fiberglass overlay... no dry rot problems. Molded fiberglass superstructures and decks mean easy maintenance... life-long beauty.



17' ROUSTABOUT

For the boaters who like to move fast in outboards.

Race over the waterways in this big, beamy beauty and the wind will sing a thrilling song! Trim, fast lines . . . a luxurious mahogany hull . . . chrome sparkling from bow ring to stern light . . . durable upholstery that is yours in a choice of two striking colors. Here is the roomiest outboard, ruggedly built for power and rough water. Yet its perfect Tollycraft handling capabilities give you a smoothness of ride . . . an economy of operation . . . that make ownership a lasting pleasure. Ideal for trailering, too.

For specifications see reverse side





TOLLYCRAFT 17' ROUSTABOUT

SPECIFICATIONS

Center-line length	17' 0"
Over-all length	17' 1"
Beam	6' 7"
Freeboard forward and aft	28" and 21"
Bottom planking	Marine fir plywood $\frac{3}{8}$ ", 5 ply, fiberglass overlay
Side planking	African mahogany 10 mm, 7 ply
Frames	Mahogany $\frac{3}{4}$ " x $2\frac{1}{2}$ "
Aft and forward deck	African mahogany plywood, fiberglass overlay, simulated planks
Inner keel	Oak $1\frac{1}{8}$ " x $3\frac{1}{2}$ "
Stem	Mahogany $2\frac{1}{2}$ " x 3"
Longitudinal stringers	4, Mahogany 1- $\frac{1}{16}$ "
Fuel capacity	Optional equipment—32 gallons
Deck and interior hardware	Chrome plated
Approximate shipping weight	825 pounds

BRONZE FASTENINGS USED THROUGHOUT



STANDARD EQUIPMENT Wrap-around safety plate windshield, Mahogany dash panel, Mechanical steering, starboard, Deluxe steering wheel, Chrome plated deck hardware, Combination bow light with staff, Combination stern light and flag pole, chrome plated, Tollycraft pennant, Hull bottom fiberglass covered, Racing bronze on hull bottom, Chrome plated ski-tow rings, Chrome plated bow ring, Silver boot stripe, After deck handrails, chrome plated, Alumilited trim moulding, Transom drain plug, Transom boarding steps and braces, Motor board braces, Aft deck hatch for storage, Upholstered seats, over polyfoam and No-Sag springs, Side panels upholstered, Glove box center of forward seat, Soft crash padding around interior, Vinyl deck matting, Forward, aft and side deck hatch cover, fiberglass overlay, finished clear, with simulated deck planks, Choice of two color combinations in upholstery.

SEE YOUR DEALER FOR LIST OF OPTIONAL EQUIPMENT



17' SPORTABOUT

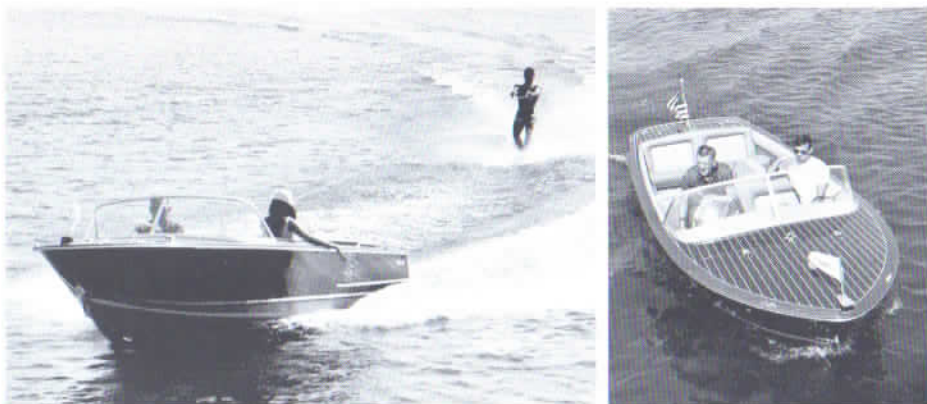
For those who want the perfect combination of speed, luxury and dependability.

For specifications see reverse side

High speed and flying spray accent your awareness that you own the fastest, most beautiful boat in its class! Watch people's faces as they see the rich, deep gleam of the mahogany hull . . . listen to the throaty snarl of power in the Interceptor 210 as it skims water-skiers in its wake . . . settle down for a pleasant cruise amid the elegance of chrome, carpets and upholstery that is yours in a choice of two exciting colors. You *know* you've got more boat . . . better quality . . . the great handling and smooth ride that is every Tollycraft's mark of distinction.



TOLLYCRAFT 17' SPORTABOUT



STANDARD EQUIPMENT 210 hp Interceptor V-8 motor, adjustable rubber mounts, Hydraulic reverse gear, 35 amp alternator, Dual exhausts, Single lever clutch and throttle control, Mahogany dash panel, Complete instrument panel gauges, Key ignition starter switch, Push-pull cable steering, Individually fused electric circuit, Four barrel, down-draft carburetor, automatic choke, Heavy duty battery, 12 volt (with plastic cover) Padded motor box, insulated, Motor compartment vents, 32 gallon fuel tank, seam-welded, hot dipped galvanized, Electric gasoline gauge, Hull bottom fiberglass overlay, Racing bronze on hull bottom, All underwater fittings, manganese bronze, Bronze propeller shaft, 1". Marine rubber bearings, Ni-bral propeller, 12 x 13, super cup, Transom boarding step and braces, Combination stern light and flag pole, chrome plated, Chrome plated deck hardware, Chrome plated deck vents, Dry chemical fire extinguisher, Lifting rings, bronze, chrome plated, Alumilited trim moulding, Chrome plated bow ring, Combination bow light with staff, Tollycraft pennant, Silver boot top, Side and aft deck chrome plated handrails, Wrap-around safety plate windshield, Soft crash padding around interior, Ski storage compartments, Upholstered seats, two color, over polyfoam and No-Sag springs, Side panels upholstered, Two jump seats facing aft, upholstered, Vinyl matting on cockpit deck, Center deck ski-tow post, chrome plated, Upholstery and carpet, color coordinated, Forward, side and aft deck fiberglass overlay, finished clear, with simulated deck planks, Choice of two color combinations in upholstery.

SEE YOUR DEALER FOR LIST OF OPTIONAL EQUIPMENT

SPECIFICATIONS

Center-line length	17' 0"
Over-all length	17' 1"
Freeboard forward and aft	28" and 21"
Bottom planking	Marine fir plywood, 1/2", 5 ply, fiberglass overlay
Side planking	African mahogany, 10 mm, 7 ply
Engine stringers	1-13/16" mahogany and 3/4" fir plywood gusset
Frames	Mahogany 3/4" x 2 1/2" oak
Aft and forward deck	African mahogany plywood, fiberglass overlay, simulated planks
Inner keel	1 1/8" x 3 1/2" oak
Stem	Mahogany 2 1/2" x 3"
Longitudinal stringers	4, mahogany, 1-1/16"
Fuel capacity	32 gallons
Deck and interior hardware	Chrome plated
Underwater fittings	Manganese bronze
Shaft	Tru-Shaft, 1"
Propeller	12 x 13 Ni-bral, super cup
Standard power	210 hp Interceptor, adjustable rubber mounts
Approximate shipping weight	1650 pounds
Weight, fully loaded	1950 pounds

BRONZE FASTENINGS USED THROUGHOUT



20' CRUISETEER — outboard

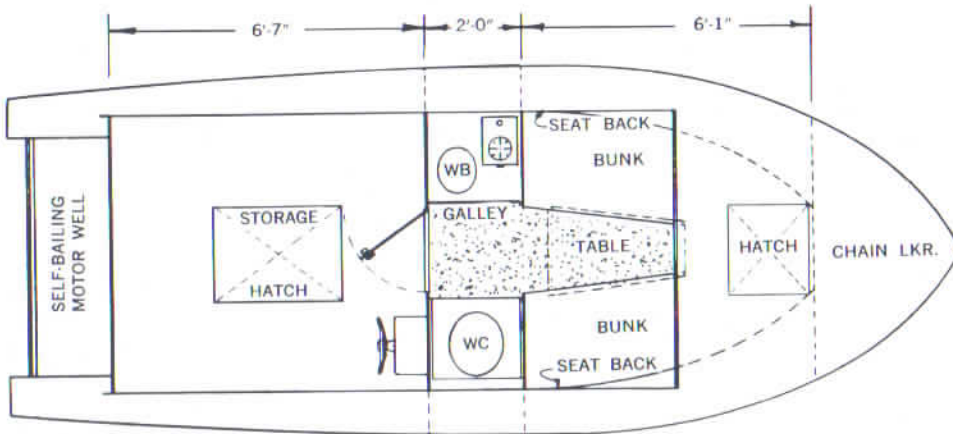
*For the traveller who likes an outboard cruiser
and wants to take it with him.*

For specifications see reverse side

Wherever your travels wander, wherever the waterway lies, this beautiful, versatile outboard cabin cruiser goes with you! Slick and fast as it slices smoothly through river, lake or open sea . . . snug and light on its trailer as it awaits your next vista of adventure. The comfortable, roomy cabin is completely equipped with fresh water, galley, marine head, filler pad for converting V-bunks to comfortable double bunk, your choice of two carpet and cushion color coordinates, storage space and many other features . . . including the famed CONOLIFT hull with fiberglass overlay for easy maintenance and smooth, perfect handling.



TOLLYCRAFT 20' CRUISETEER — outboard



STANDARD EQUIPMENT Molded fiberglass control console, Mechanical steering, Fused electric circuit, Chrome spoke ship's wheel, 18", Transom boarding steps and braces, Self-bailing water-tight motor well, Motor board braces, Transom drain plug, Mast light on flying bridge windshield, Combination bow light with staff, Tollycraft pennant, Hinged well curtain panel, Four hull side vents to tank compartment, with vent duct, Chrome plated deck hardware, Forward deck hatch, molded fiberglass, hinged, with light, Side and forward deck fiberglass overlay, painted non-skid, Hull sides, bottom and transom fiberglass overlay, Racing bronze on hull bottom, Sliding glass windows, stainless steel, channel, glass stops, locks and drains, Alumilited trim moulding, Inland navigational lights, Molded fiberglass cabin top, two-tone, white and turquoise, Mahogany flying bridge, side wings, painted white, Cabin top handrails, chrome plated, Chrome plated bow ring, Turquoise boot top and gunwale trim, Mahogany door to cabin, Vinyl matting on cockpit deck, 11 gallon fresh water tank, with hand pump, Molded fiberglass ledge and basin, One burner alcohol stove, Folding table and hanger brackets, Forward V-bunks, polyfoam mattresses, with filler pad, Hinged upholstered seat backs, Cabin bracket lights, Carpet on cabin floor, Marine toilet, with shut-off valve, box enclosed, Interior mahogany, semi-gloss varnish in mahogany color, Carpet and mattresses, color coordinated, Choice of two color combinations in upholstery.

SEE YOUR DEALER FOR LIST OF OPTIONAL EQUIPMENT

SPECIFICATIONS

Center-line length	20' 3"
Over-all length	20' 4"
Beam	7' 8"
Freeboard forward and aft	43" and 34"
Headroom in cabin	5' 4 1/2"
Bottom planking	Marine fir plywood 3/8", 5 ply, fiberglass overlay
Side planking	African mahogany plywood, 10 mm, 7 ply, fiberglass overlay
Frames	Mahogany, 3/4" x 4"
Side and forward deck	Marine fir plywood 3/8", 5 ply, fiberglass overlay, painted non-skid
Inner keel	Air dried fir, 1 3/4" x 5"
Stem	Mahogany, 2 1/4" x 3 1/2"
Longitudinal stringers	Mahogany, 1 3/4", plus 2 bottom battens
Fuel capacity	40 gallons (optional extra)
Fresh water capacity	11 gallons
Deck and interior hardware	Chrome plated
Underwater fittings	Manganese bronze
Approximate shipping weight	1100 pounds
Weight, fully loaded	1600 pounds
Height on shipping cradle, flying bridge model	8' 1"

CONOLIFT hull, modified deep-V.
BRONZE FASTENINGS USED THROUGHOUT



20' WEEKENDER — outdrive

For the family who wants power and plenty of speed when they trailer to new horizons.

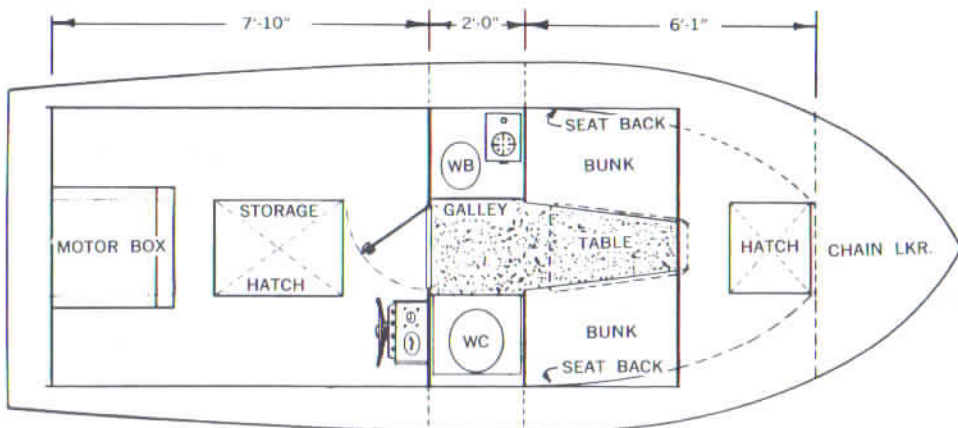
Let the whole family step aboard into an exciting world of discovery! The spirit of adventure breathes in this sleek outdrive cruiser, with its stylish molded fiberglass cabin top . . . flying bridge with side wings . . . and deep cockpit that has the youngsters in mind. Delightfully pleasant cabin appointments, roomy and completely equipped for comfortable cruising, with a choice of two color-coordinated decorator interiors. Everyone will enjoy the smooth, even ride of the CONOLIFT hull, with its fiberglass overlay for strength and lifelong service.

For specifications see reverse side





TOLLYCRAFT 20' WEEKENDER — outdrive



STANDARD EQUIPMENT 150 OMC with power lift, 35 amp alternator, Single lever clutch and throttle control, Instrument panel, Molded fiberglass control console, mahogany base, Push-pull cable steering, Individually fused electric circuits, color coded, Chrome spoke ship's wheel, 18", Dry chemical fire extinguisher, Heavy duty battery, 12 volt with cover, Motor box insulated, Motor compartment vents, hull side and transom, Transom drain plug, 40 gallon gas tank, seam-welded, hot dipped galvanized, Gasoline measuring stick, Propeller, Mahogany transom boarding steps and braces, Chrome plated deck hardware, Forward deck hatch, molded fiberglass, hinged, with light, Side and forward deck fiberglass overlay, painted non-skid, Hull bottom, sides and transom fiberglass overlay, Racing bronze on hull bottom, Sliding glass windows, stainless steel channels, glass stops and drains, Aluminum trim moulding, Inland navigation lights, Pole mast light on flying bridge windshield, Combination bow light with staff, Tollycraft pennant, Vinyl cockpit deck matting, Upholstered motor box, Molded fiberglass cabin top, two-tone, white and turquoise, Mahogany flying bridge, side wings, painted white, Cabin top handrails, chrome plated, Turquoise boot top and gunwale trim, Chrome plated bow ring, Mahogany door to cabin, 11 gallon fresh water tank, with hand pump, Molded fiberglass galley ledge and basin, One burner alcohol stove, Folding table and hanger brackets, Forward V-bunks, polyfoam mattresses, with filler pad, Hinged, upholstered seat backs, Cabin bracket lights, Carpet on cabin floor, Marine toilet, with shut-off valve, box enclosed, Interior mahogany, semi-gloss varnish, in mahogany color, Carpet and mattresses, color co-ordinated, Exterior is white and turquoise, with mahogany trim.

SEE YOUR DEALER FOR LIST OF OPTIONAL EQUIPMENT

SPECIFICATIONS

Center-line length	20' 3"
Over-all length	20' 4"
Beam	7' 8"
Freeboard forward and aft	43" and 34"
Headroom in cabin	5' 4 1/2"
Bottom planking	Marine fir plywood, 3/8", 5 ply, fiberglass overlay
Side planking	African mahogany plywood, 10 mm, 7 ply, fiberglass overlay
Frames	Mahogany, 3/4" x 4"
Side and forward deck	Marine fir plywood, 3/8", 5 ply, fiberglass overlay painted non-skid
Inner keel	Air dried fir, 1 3/4" x 5"
Stem	Mahogany, 2 1/4" x 3 1/2"
Longitudinal stringers	Mahogany, 1 3/4", plus bottom battens
Fuel capacity	40 gallons
Fresh water capacity	11 gallons
Deck and interior hardware	Chrome plated
Approximate shipping weight	1600 pounds
Weight, fully loaded	2100 pounds
Height on shipping cradle	8' 1"

CONOLIFT hull, modified deep-V.
BRONZE FASTENINGS USED THROUGHOUT



20' SPORTFISHER — outdrive

For the sporting man and woman who want to go after the big ones and scoff at the weather.

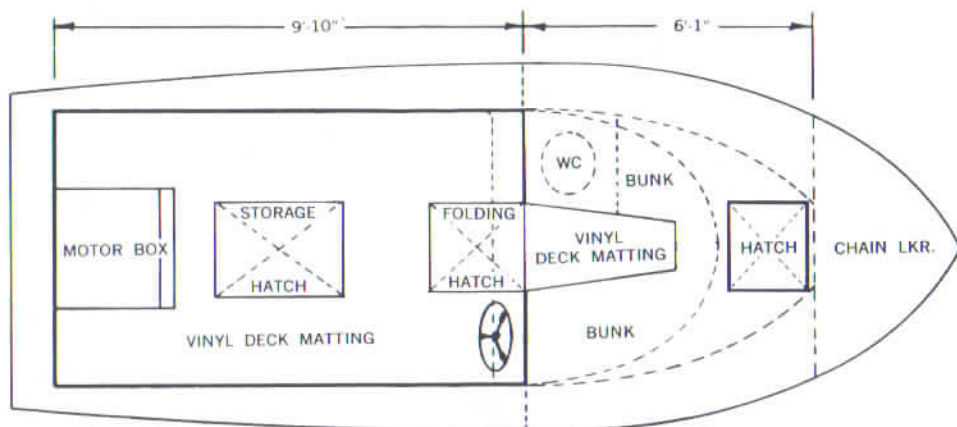
When the lure of the line draws you . . . when the big ones are biting and you want to be there . . . you own the perfect boat! This one-piece molded fiberglass cabin is completely weatherproof . . . shrugs off the elements as easily as a fat Rainbow, a fighting bass or a 40-pound Chinook. The big cockpit gives the whole crowd plenty of fishing room. You get to the fishing fast and smooth with the CONOLIFT fiberglass overlay hull . . . you enjoy the trip in the smartly decorated, weather proof cabin. And you'll discover this versatile sportsman's boat is great for water-skiing, exploring and packing on the trailer, too.



For specifications see reverse side



TOLLYCRAFT 20' SPORTFISHER — outdrive



STANDARD EQUIPMENT 150 hp OMC with power lift, 35 amp alternator, Single lever clutch and throttle control, Instrument panel, Molded fiberglass control console, mahogany base, Push-pull cable steering, individually fused electric circuits, color coded, Dry chemical fire extinguisher, Heavy duty battery, 12 volt with cover, Motor box insulated, Motor compartment vents, hull side and transom, Transom drain plug, 40 gallon gas tank, seam-welded, hot dipped galvanized, Gasoline measuring stick, Chrome spoke ship's wheel, 18", Propeller, Mahogany transom boarding steps and braces, Chrome plated deck hardware, Forward deck hatch, molded fiberglass, hinged, with light, Molded fiberglass deck and cabin, one piece, Hull bottom, sides and transom fiberglass overlay, Racing bronze on hull bottom, Aluminum trim moulding, Inland navigation lights, Pole mast light on flying bridge windshield, Tollycraft pennant, Combination bow light with staff, Stern flag pole, Upholstered motor box, Mahogany flying bridge windshield, side glass, painted white, Turquoise boot top and gunwale trim, Chrome plated bow ring, Cabin door with hasp, V-bunks, polyfoam mattresses, Cabin bracket lights, Vinyl matting on cabin floor and cockpit deck, Matting and mattresses, color co-ordinated, Exterior is white and turquoise, Toilet with sea cock on pick-up.

SEE YOUR DEALER FOR LIST OF OPTIONAL EQUIPMENT



SPECIFICATIONS

Center-line length	20' 3"
Oven-all length	20' 4"
Beam	7' 8"
Freeboard forward and aft	43" and 34"
Headroom in cabin	5' 4 1/2"
Bottom planking	Marine fir plywood, 3/8", 5 ply, fiberglass overlay
Side planking	African mahogany plywood, 10 mm, 7 ply, fiberglass overlay
Frames	Mahogany, 3/4" x 4"
Side, forward deck and cabin	Molded fiberglass, one piece
Inner keel	Air dried fir, 1 3/4" x 5"
Stem	Mahogany, 2 1/4" x 3 1/2"
Longitudinal stringers	Mahogany, 1 3/4", plus bottom battens
Fuel capacity	40 gallons
Deck and interior hardware	Chrome plated
Approximate shipping weight	1600 pounds
Weight, fully loaded	2100 pounds
Height on shipping cradle	7' 7"

CONOLIFT hull, modified deep-V.
BRONZE FASTENINGS USED THROUGHOUT



26' VACATIONER — outdrive

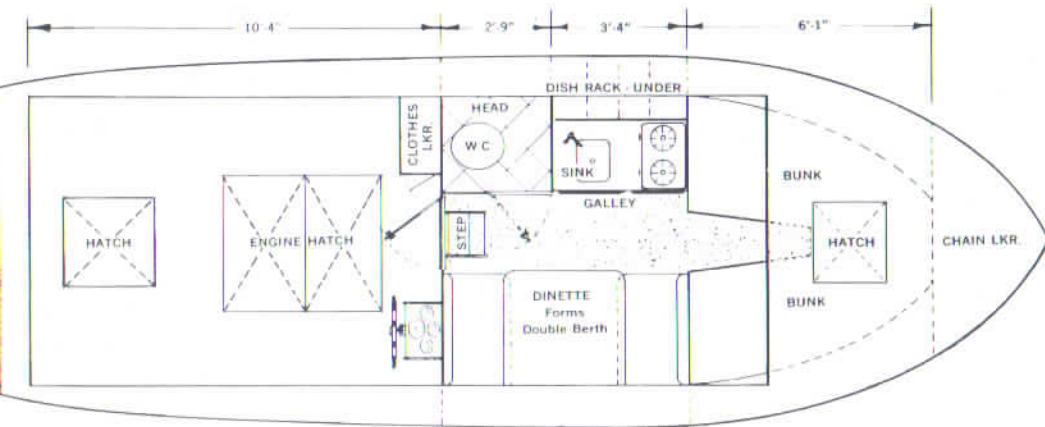
For the fun-seeking sociables who like to welcome family and friends aboard.

Exciting trips and sea-going adventure await you in this powerful, spacious cabin cruiser! Complete livability warmly invites the young family, the sociable company of friends. Fast CONOLIFT hull, with fiberglass overlay . . . flying bridge with side wings . . . molded fiberglass cabin top . . . walk-around side decks . . . gleaming chrome fittings . . . quiet trolling or exhilarating speed and maneuverability tell one and all your boat is for *living* . . . for *cruising* . . . for *fun!*

For specifications see reverse side



TOLLYCRAFT 26' VACATIONER — outdrive



STANDARD EQUIPMENT Power, 200 hp OMC with power lift, 35 amp alternator, Single lever clutch and throttle control, power shift, Instrument panel and gauges, Molded fiberglass control console, Individually fused electric circuits, color coded, Chrome spoke wheel, 18", Heavy duty battery, 12 volt with plastic cover, Hatch cover motor sound insulated, 66 gallon gas tank, seam welded, hot dipped galvanized, Gasoline gauge, electric, Mahogany transom boarding steps and braces, Wide walk-around side decks, Cast bronze deck hardware, chrome plated, Forward deck hatch, molded fiberglass, hinged with light, Side and forward deck, fiberglass overlayed, Hull sides, bottom, and transom fiberglass overlay, Racing bronze on hull bottom, Sliding glass windows, stainless steel channels, glass stops, locks and drains, Alumilited trim molding, International Navigational lights, Pole mast light on flying bridge windshield, Electric horn, Dry chemical fire extinguisher, Motor compartment light, Tollycraft pennant, Mahogany cockpit handrails, chrome plated stanchions, Molded fiberglass cabin top, two-tone, white and turquoise, mahogany flying bridge, side wings, Cabin top handrails, chrome plated, Water-tight cockpit with transom drains, Four hull side ventilators to bilge, Headliner over forward V-bunks, Headliner in cabin, All cockpit hatches bound with metal trim, Turquoise boot top and gunwale trim, Chrome plated bow ring, Mahogany door, hatch, with adjuster, to cabin, Chain locker in forepeak, 15 gallon fresh water tank, deck filled and vented, 50 pound ice box, molded fiberglass interior, Molded fiberglass galley ledge and sink, Glass rack, Five storage drawers, molded plastic, Two burner alcohol stove, Dish locker, Pastry board, Hand operated galley fresh water pump, Combination dinette and bunk, Dinette cushions of polyfoam, Clothes locker, Forward V-bunks, polyfoam mattresses and filler pad, Dome and bracket light fixtures, 12 volt, Carpet on cabin floors, Vinyl tile on head floor and in front of galley, Fully enclosed head, Marine toilet with shut-off valve, Bracket light in head, Mirror in head, Interior mahogany semi-gloss varnish, Dinette cushions, V-bunk mattresses and carpet, color co-ordinated, Vinyl cockpit deck matting, Exterior in white, turquoise and mahogany trim, Choice of two color combinations in upholstery, Paint touch-up kit with instructions.

SEE YOUR DEALER FOR LIST OF OPTIONAL EQUIPMENT

SPECIFICATIONS

Center-line length	26' 1 $\frac{1}{4}$ "
Over-all length	26' 4 $\frac{1}{4}$ "
Beam	9' 0"
Freeboard forward and aft	42" and 37"
Headroom in cabin	6' 1"
Bottom planking	Marine fir plywood, 5 ply, $\frac{1}{2}$ ", fiberglass overlay
Side planking	African mahogany plywood, 7 ply, 10 mm, fiberglass overlay
Frames	Mahogany, $\frac{3}{4}$ " x 4"
Forward, side and aft deck	Marine fir plywood, 5 ply, $\frac{3}{8}$ " fiberglass overlay
Inner keel	Air dried fir, 1 $\frac{3}{4}$ " x 5 $\frac{1}{2}$ "
Stem	Mahogany, 2 $\frac{1}{2}$ " x 3 $\frac{1}{2}$ "
Longitudinal stringers	Vertical grain fir, air-dried, 1 $\frac{3}{4}$ ", plus bottom battens
Fuel capacity	66 gallons
Fresh water capacity	15 gallons
Deck and interior hardware	Cast bronze, chrome plated
Underwater fittings	Manganese bronze
Water tight bulkhead	One
Standard power	200 hp OMC
Approximate shipping weight	4400 pounds
Weight, fully loaded	5000 pounds
Height on shipping cradle, flying bridge model	10' 2"
Height on shipping cradle, hard top model	10' 4"

CONOLIFT hull, modified deep-V.

BRONZE FASTENINGS USED THROUGHOUT



For specifications see reverse side

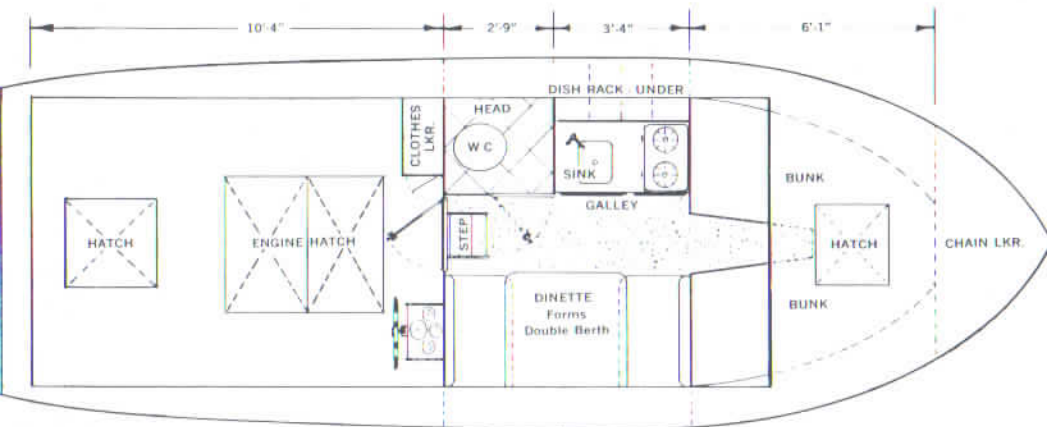
26' VACATIONER — inboard

For the boater who prefers quiet power and superb handling at all speeds.

Open the cabin door and be happy! Elegant mahogany panelling . . . luxurious carpeting and interior furnishing, with your choice of two matched color schemes . . . compact galley, with ample fresh water, two-burner stove, modern ice-box, dish locker, glass rack, pastry board . . . molded plastic storage drawers . . . attractive dinette that converts easily into comfortable bunk . . . roomy forward V-bunks with color-coordinated mattresses and filler pad . . . fully enclosed head with mirror and tile . . . these are a few of the extra conveniences and pleasures that come with owning a boat designed and crafted for the *discriminating* adventurer!



TOLLYCRAFT 26' VACATIONER — inboard



Shown with optional hardtop and enclosure

STANDARD EQUIPMENT 210 Interceptor marine motor, adjustable rubber mounts, Hydraulic reverse gear, 35 amp alternator, 2 barrel Down-draft carburetor, automatic choke, Single lever clutch and throttle control, Complete motor instrument panel gauges, with lights, Heavy duty positive rack and pinion steering, Molded fiberglass control console, Chrome spoke ship's wheel, 18", Heavy duty battery, 12 volt with plastic cover, Hatches over motor sound insulated, One 66 gallon fuel tank, seam welded, hot dipped galvanized, Gasoline gauge, electric, All underwater fittings, manganese bronze, Bronze propeller shaft, 1", Marine rubber bearings, Zinc electrolysis plate, transom mounted 36 sq. in., Ni-bral propeller, super-cup, 14 x 8 or 13 x 10, Four hull side ventilators to bilge, Mahogany transom boarding step and braces, Stern flag pole with holder, Wide walk-around side decks, Cast bronze deck hardware, chrome plated, Forward deck hatch, molded fiberglass, hinged with light, Forward, side and aft deck fiberglass overlay, painted non-skid, Hull bottom, sides, and transom fiberglass overlay, Racing bronze on hull bottom, Sliding glass windows, stainless steel channel, glass stops, locks, and drains, Alumilited trim moulding, International Navigational lights, Pole mast light on flying bridge windshield, Mahogany cockpit handrails, chrome plated stanchions, Tollycraft pennant, Headliner in cabin and over forward V-bunks, Electric horn, Dry chemical fire extinguisher, motor compartment light, Vinyl deck matting in cockpit, Molded fiberglass cabin top, two-tone, white and turquoise, Mahogany flying bridge, side wings, Cabin top handrails, chrome plated, Water tight cockpit, with transom drains, All cockpit hatches bound with metal trim, Turquoise boot top and gunwale trim, Chrome plated bow ring, Mahogany door, hatch, with adjuster, to cabin, Clothes locker in cockpit, Chain locker in forepeak, 15 gallon fresh water tank, deck filled and vented, 50 lb. ice box, molded fiberglass interior, Molded fiberglass galley ledge and sink, Five storage drawers, molded plastic, Two burner alcohol stove, Dish locker, Pastry board, Hand operated galley fresh water pump, Combination dinette and bunk, Formica table top in dinette (Dinette cushions of polyfoam), Glass rack, Headliner in cabin and over forward V-bunks, Forward V-bunks, polyfoam mattress and filler pad, Dome and bracket light fixtures, 12 volt, Carpet on cabin floors, Mirror in head, Vinyl tile on head floor and in front of galley, Fully enclosed head, Marine toilet with shut-off valve, Bracket light in head, Interior mahogany, semi-gloss varnish, Dinette cushions, V-bunk mattresses and carpet, Exterior mahogany trim painted white, Choice of two color combinations in upholstery, Paint and touch-up kit with manual.

SEE YOUR DEALER FOR LIST OF OPTIONAL EQUIPMENT

SPECIFICATIONS

Center-line length	26' 1 $\frac{1}{4}$ "
Over-all length	26' 4 $\frac{1}{4}$ "
Beam	9' 0"
Freeboard forward and aft	42" and 37"
Headroom in cabin	6' 1"
Bottom planking	Marine fir plywood, 5 ply, $\frac{1}{2}$ ", fiberglass overlay
Side planking	African mahogany plywood, 7 ply, 10 mm, fiberglass overlay
Engine stringers	Fir or mahogany, 1 $\frac{3}{4}$ "
Frames	Mahogany, $\frac{3}{4}$ " x 4"
Forward, side and aft deck	Marine fir plywood, 5 ply, $\frac{3}{8}$ ", fiberglass overlay
Inner keel	Air dried fir, 1 $\frac{3}{4}$ " x 5 $\frac{1}{2}$ "
Stem	Mahogany, 2 $\frac{1}{2}$ " x 3 $\frac{1}{2}$ "
Longitudinal stringers	Vertical grain fir, air dried, 1 $\frac{3}{4}$ " plus bottom battens
Fuel capacity	One 66 gallon tank
Fresh water capacity	15 gallon
Deck and interior hardware	Cast bronze, chrome plated
Underwater fittings	Manganese bronze
Shaft	Tru-Shaft, 1"
Propeller	Ni-Bral, 14 x 8 or 13 x 10
Water-tight bulkhead	One
Standard power	210 hp V-8 Interceptor, direct drive
Approximate shipping weight	4500 pounds
Weight, fully loaded	5500 pounds
Height, on shipping cradle, flying bridge model	10' 2"
Height on shipping cradle, hard top model	10' 4"

CONOLIFT hull, modified deep-V.

BRONZE FASTENINGS USED THROUGHOUT



28' VOYAGER

For the family who enjoys the pleasure of long, fun-filled cruises.

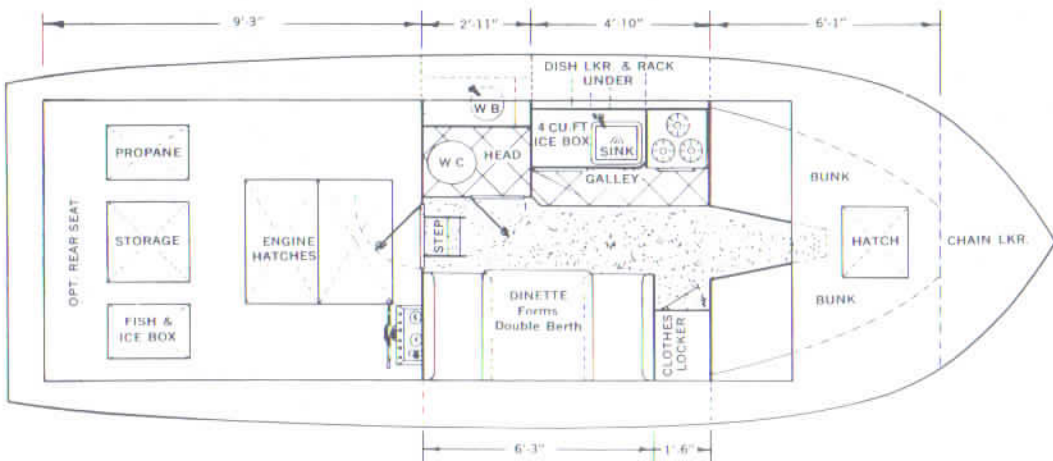
From the first moment you step aboard this exciting cruiser, you are ready for a voyage to limitless pleasure! Stow away your gear and stock the food lockers . . . everything else is ready in this *completely* equipped cruiser. The spacious cabin will reach out to welcome your family and friends with beautiful decorator-toned furnishings in a color and atmosphere you personally selected. Pleasant surprises await you on your voyage as you discover the pressure water system, the efficient galley complete with three-burner range *and oven* . . . the inviting dinette . . . comfortable sleeping accommodations for four inside the cabin, more in the large, roomy cockpit. Take the helm of this streamlined beauty . . . check the complete motor instrument gauges on the control console . . . thrill as the surge of power races the famed CONOLIFT hull cleanly and smoothly through the water. Bon voyage . . . you are bound for intriguing new horizons!

For specifications see reverse side





TOLLYCRAFT 28' VOYAGER



Shown with optional hardtop and enclosure



STANDARD EQUIPMENT Gray Marine motor, 220 hp, direct drive adjustable rubber mounts, Opt. Gray Marine motor, 220 hp 1.57:1 red., Hydraulic reverse gear, 35 amp alternator, Down-draft carburetors, automatic choke, Dual exhausts with high-lift risers, Single lever clutch and throttle controls, Complete motor instrument panel gauges, with lights, Heavy duty positive rack and pinion steering, Molded fiberglass control console, Individually fused electric circuits, color coded, Chrome spoke ship's wheel, 22", Ship's bell, Master battery switch, vapor proof type, Heavy duty battery, 12 volt with plastic cover, Hatches over motor sound insulated, Two 54 gallon fuel tanks, seam welded, hot dip galvanized, Gasoline gauge, electric, Six hull side ventilators, Strut and rudder, manganese bronze, Bronze propeller shaft, 1"-opt. 1 $\frac{1}{4}$ " on red., Marine rubber bearing, Zinc electrolysis plate, transom mounted, 36 sq. in., Ni-bral propeller, 14 x 8, super cup on D.D., Mahogany transom boarding step and braces, Mahogany cockpit handrails, chrome plated stanchions, Two side storage compartments in cockpit, Stern flag pole holder, Wide walk around side decks, Cast bronze deck hardware, chrome plated, Forward deck hatch, molded fiberglass, hinged, with adjuster and with light, Side and forward deck, fiberglass overlay, painted non-skid, Flared bow section cedar planked, double fiberglass overlay, Hull sides, bottom and transom, fiberglass overlay, Sliding side window glass, stainless steel channel, with glass stops, locks and drains, Alumilited trim moulding, Stainless steel and alumilited trim around side window openings, International Navigational lights, Electric horn, Electric windshield wiper, Two dry chemical fire extinguishers, 5 $\frac{1}{2}$ lb. propane tank, flush mounted in fiberglass well, vented overboard, Motor com-

SPECIFICATIONS

Center-line length	28' 2"
Over-all length	28' 5"
Beam	10' 3"
Freeboard forward and aft	55" and 39"
Headroom in cabin	6' 2"
Bottom planking	Marine fir plywood, $\frac{1}{2}$ ", 5 ply, fiberglass overlay
Side planking	Marine fir plywood, $\frac{1}{2}$ ", 5 ply, fiberglass overlay
Engine stringers	Fir or mahogany, 1 $\frac{3}{4}$ "
Frames	Mahogany, 1-1/16" x 4"
Side and forward deck	Marine fir plywood, 5 ply, $\frac{3}{8}$ ", fiberglass overlay
Inner keel	Air dried fir, 1 $\frac{3}{4}$ " x 5 $\frac{1}{2}$ "
Stem	Mahogany, 2 $\frac{1}{2}$ " x 4"
Longitudinal stringers	2, air dried fir, 1 $\frac{3}{4}$ " plus bottom battens
Fuel capacity	2 tanks, 54 gallons each
Fresh water capacity	32 gallons
Deck and interior hardware	Cast bronze, chrome plated
Underwater fittings	Manganese bronze
Shaft	Tru-Shaft, 1"-1 $\frac{1}{4}$ " tru shaft on opt. reduct drive
Propeller	14 x 8, Ni-bral, super cup
Water tight bulkheads	One
Standard power	220 hp Gray Marine, direct drive, (optional 1.57:1 reduct)
Approximate shipping weight	5500 pounds
Weight, fully loaded	7000 pounds
Height on shipping cradle, flying bridge model	10' 2"
Height on shipping cradle, hard top model	10' 5"

CONOLIFT hull, modified deep-V.

BRONZE FASTENINGS USED THROUGHOUT

partment light, Tollycraft pennant, Molded fiberglass cabin top, two-tone, white and turquoise, Mahogany flying bridge, side wings, Cabin top handrails, chrome plated, Flying bridge side wing handrails, chrome plated, Water tight cockpit with transom drains, Insulated fish and ice box, in cockpit deck, over-board drain, Paint touch-up kit with instructions, Vinyl matting, non-skid type, cemented to cockpit deck, All cockpit hatches bound with metal trim, Turquoise boot top and gunwale trim, Chrome plated bow ring, Mahogany door, hatch, with lock and adjuster, to cabin, Chain locker in forepeak, Cabin top headliner, 32 gallon fresh water tank, deck filled, vented, Molded fiberglass icebox, 3 $\frac{1}{2}$ cu. ft., 50 lb., Formica galley ledge, stainless steel sink, Three burner propane range, with oven, Dish locker, under side deck, sliding decorative plastic panels, Glass rack, 110 volt shore connection, 3 convenient outlets, with polarity indicator, Pastry board, Pressure water system, Five molded plastic drawers, Headliner over forward bunks, Side panels in V-bunk area, Combination dinette and bunk, Formica table top in dinette, Dinette cushions of polyfoam, Forward V-bunks, polyfoam mattresses, with filler pad, Hanging clothes locker, Four dome lights in cabin, Carpet on cabin floors, Vinyl tile in head and in front of galley, Fully enclosed head, Molded fiberglass ledge and basin in head, Marine toilet, with shut-off valve, Mirror in head, Bracket light in head, Chrome toilet fixtures, Interior mahogany, semi-gloss varnish, Sliding side window drapes, All interior fabrics, upholstery, drapes and carpet, color co-ordinated, Exterior in white, turquoise and mahogany trim, Choice of two color combinations in upholstery.

SEE YOUR DEALER FOR LIST OF OPTIONAL EQUIPMENT



32' EXPLORER EXPRESS

For the big family with bold ideas about broad horizons.

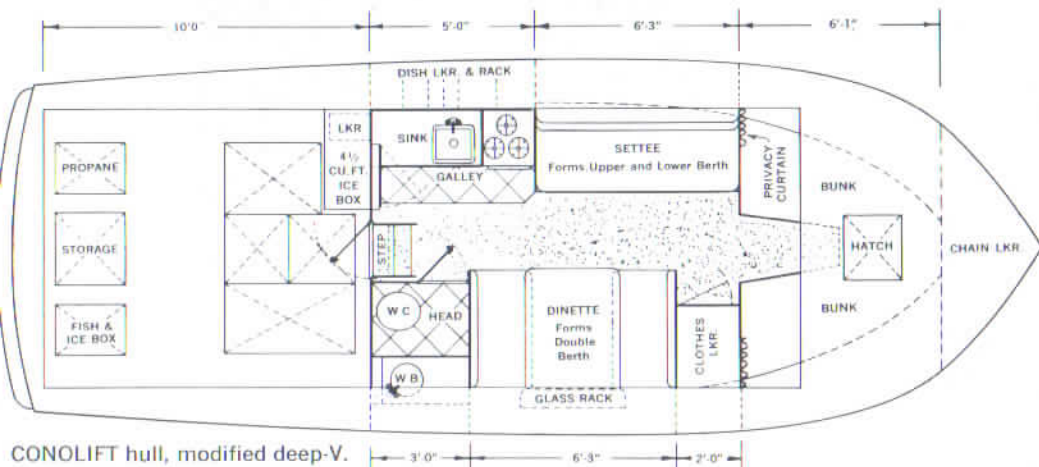
Come aboard! This is a boat built for pleasure and for people—lots of them! Plenty of room for family *and* friends in this honest six sleeper. The luxurious cabin is completely factory outfitted for privacy, comfort and that wonderful feeling of elegance afloat. Beautiful color-coordinated interiors, with your personal choice of deep pile carpeting, pleated draperies and stunning upholsteries. A galley to delight, with hot and cold water, electric pressure water system that operates in both galley and enclosed head... eye-level ice-box... three-burner range and oven... roomy dinette... wide, no-bumping aisle... tiled work area... ample drawers and storage. There's so much more in this tremendous cruiser... so come aboard and get acquainted!



For specifications see reverse side



TOLLYCRAFT 32' EXPLORER EXPRESS



CONOLIFT hull, modified deep-V.



optional command bridge

STANDARD EQUIPMENT Twin Gray Marine motors, 220 hp direct drive, adjustable rubber mounts, Hydraulic reverse gears, 35 amp alternator on each motor, Down-draft carburetor, automatic choke, Dual exhausts with high-lift risers, Single lever clutch and throttle controls, Complete motor instrument panel gauges, with lights, Heavy duty positive rack and pinion steering, Molded fiberglass control console, Individually fused electric circuits, color coded, Chrome spoke ship wheel, 22", Ship's bell, Two master battery switches, vapor proof type, Two heavy duty batteries, 12 volt, plastic cover, Electric bilge blower, Hatches over motors sound insulated, Two 70 gallon fuel tanks, seam welded, hot dipped galvanized, Gasoline gauge, electric, Ten hull side ventilators to bilge, Struts and rudders, manganese bronze, All underwater fittings, manganese bronze, Bronze propeller shaft, 1", Marine rubber bearings, Motor compartment light, Zinc electrolysis plate, transom mounted, 72 sq. in., Ni-bral propellers, 14x9 super cup, Mahogany transom boarding step and braces, Mahogany cockpit handrails, nylon weather cloth, Stern flag pole and holder, Wide walk-around side decks, Cast bronze deck hardware, chrome plated, Enclosed chain locker, forepeak, Cabin top headliner, Three storage compartments in cockpit, under side and aft decks, Forward deck hatch, molded fiberglass, hinged with adjusters and lock, with light, Side and forward deck fiberglass overlay painted non-skid. Flared bow section cedar planked, double fiberglass overlay. Hull sides, bottom and transom completely fiberglass overlay, Sliding side window glass, stainless steel channel, with glass stops, locks and drains, Alumilited trim moulding, Stainless steel and alumilited trim around side window openings, International navigation lights, Electric horn, Electric windshield wiper, Two dry chemical fire extinguishers, One 5½ lb. propane tank, flush mounted cockpit, vented overboard, Molded fiberglass cabin top, two tone, white and turquoise, Mahogany flying bridge, side wings, with glass,

SPECIFICATIONS

Center-line length	31' 7"
Over-all length	32' 1"
Draft	2' 4"
Beam	11' 3½"
Freeboard forward and aft	68" and 41"
Headroom in cabin	6' 3"
Bottom planking	Marine fir plywood, 5/8", 7 ply, fiberglass overlay
Side planking	Marine fir plywood, 1/2", 5 ply, fiberglass overlay
Engine stringers	Air dried, fir, 1¾"
Frames	Mahogany, 1-1/16" x 4"
Side and forward deck	Marine fir plywood, 5 ply, 1/2", fiberglass overlay
Inner keel	Air dried fir, 1¾" x 5½"
Inner chines	Oak
Stem	Mahogany, 2¼" x 4"
Longitudinal stringers	4, vertical grain fir, air dried, 1¾"
Fuel capacity	Two tanks, 70 gallons each
Fresh water capacity	40 gallons
Deck and interior hardware	Cast bronze, chrome plated
Underwater fittings	Manganese bronze
Shafts	Tru-Shaft, 1"
Propellers	14 x 9, Ni-bral, super cup
Water tight bulkhead	One
Standard power	Twin 220 hp Gray Marine, direct drive
Approximate shipping weight	8750 pounds
Weight, fully loaded	10,900 pounds
Height on shipping cradle, hard top model	13' 6"

BRONZE FASTENINGS USED THROUGHOUT

Helmman seat, 24", Cabin top handrails, chrome plated, Flying bridge side wing handrails, chrome plated, water tight cockpit with transom drains, Insulated fish and ice box, in cockpit deck, overboard drain, Vinyl matting, non-skid type, cemented to cockpit deck, All cockpit hatches bound with metal trim, Turquoise boot top and gunwale trim Chrome plated bow ring, Mahogany door, folding hatch, with lock adjuster, to cabin, 40 gallon fresh water tank, deck filled and vented, Pressure hot and cold water system, Molded plastic ice box, 4½ cu. ft. (electric refrigeration optional), eye level installation, Formica galley ledge, stainless steel sink, Three burner propane range, with oven and cover, Dish locker, under side deck, sliding decorative plastic panels, Glass rack, 110 volt shore power connection, 3 convenience outlets with polarity indicator, wired to hot water tank, Pastry board, Four molded plastic drawers in galley, Combination dinette and bunk, Formica table top in dinette, Dinette cushions of polyfoam, Five molded plastic drawers under dinette, Hot water tank, 8 gallon, insulated, heated by exchanger from motor, and 110 volt shore power, Headliner over forward bunk area, Side panels over V-bunk area, Settee, upper and lower bunk, with polyfoam cushions, Storage under settee, sliding doors for easy access, Forward V-bunks, polyfoam mattresses, with filler pad, Sliding privacy curtain aft of forward V-bunks, Hanging clothes locker, Four dome lights in cabin, Carpet on cabin floor, Sliding side window drapes, canvas windshield cover, All interior fabrics, upholstery, drapes and carpet color co-ordinated, Interior mahogany, semi-gloss varnish, in mahogany color, Fully enclosed head, Vinyl tile in front of galley and in head, Molded fiberglass ledge and wash basin in head, Marine toilet, with shut-off valve, Mirror in head, Bracket light in head, Chrome toilet fixtures, Choice of two color combinations in upholstery, Paint touch-up kit with instructions.

SEE YOUR DEALER FOR LIST OF OPTIONAL EQUIPMENT



For specifications see reverse side

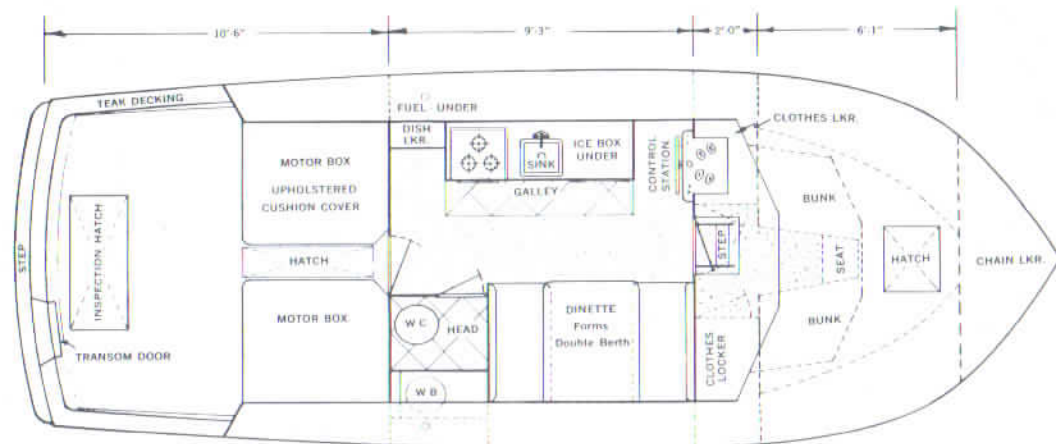
32' EXPLORER SEDAN

For the boaters who enjoy togetherness and want everything on one level without steps.

An exciting newcomer joins our fleet . . . with one level cabin and cockpit convenience! The deck on this spacious, powerful sedan is built long and low . . . lets a tall man stand straight . . . the whole family enjoys the cruise together in one cabin. The deck and cabin structures are completely molded of fiberglass. Here is roominess, comfort and visibility like you've never seen before in a 32-footer . . . from the fully instrumented forward control station to the smallest luxurious cabin detail. A *completely* outfitted cabin cruiser all as standard equipment . . . with thoughtful conveniences deliberately designed to captivate the heart and imagination of every woman aboard! Big fuel capacity means many miles of uninterrupted cruising adventure . . . and the stronger-than-steel plywood and fiberglass overlay CONOLIFT hull means smoother handling in all weather. With the optional molded command bridge (shown above), there is plenty of room for everyone topside for lounging and fishing.



TOLLYCRAFT 32' EXPLORER SEDAN



STANDARD EQUIPMENT Twin Gray Marine motors, 220 hp direct drive adjustable rubber mounts, 35 amp alternator on each motor, Hydraulic reverse gears, Down-draft carburetor, automatic choke, Dual exhausts with high-lift risers, Single lever clutch and throttle controls, Complete motor instrument panel gauges, with lights, Heavy duty positive rack and pinion steering, Mahogany control console, Individually fused electric circuits, color coded, Chrome spoke ship wheel, 22", Ship's bell, Two master battery switches, vapor proof type, Two heavy duty batteries, 12 volt with plastic covers, Bilge blower, electric, Hatches over motors, sound insulated, 120 gallon fuel tank, seam welded, hot dipped galvanized, Gasoline gauge, electric, Ten hull side ventilators, Struts and rudders, manganese bronze, All underwater fittings, manganese bronze, Bronze propeller shaft, 1", Marine rubber bearings, Zinc electrolysis plate, transom mounted, 72 sq. in., Ni-bral propellers, 14 x 9 super cup, Mahogany transom boarding step and braces, Stern flag pole and holder, Wide walk-around side decks, Cast bronze deck hardware, chrome plated, Enclosed chain locker, forepeak, Cabin top headliner, Forward deck hatch, molded fiberglass, with light, adjusters and lock, Side and forward deck fiberglass molded including forward trunk cabin, Motor boxes with upholstered cushions, Flared bow section cedar planked, double fiberglass overlay, Transom door, Hull sides, bottom and transom completely fiberglass overlay, Aft deck trimmed in teak, Sliding side window glass, stainless steel channel, with glass stops, locks and drains, Alumilited trim moulding, Stainless steel and alumilited trim around side window openings, Lou-

SPECIFICATIONS

Center-line length	31' 7"
Over-all length	32' 1"
Draft	2' 4"
Beam	11' 3 1/2"
Freeboard forward and aft	68" and 41"
Headroom in cabin	6' 5"
Bottom planking	Marine fir plywood, 5/8", 7 ply, fiberglass overlay
Side planking	Marine fir plywood, 1/2", 5 ply, fiberglass overlay
Engine stringers	Air dried, fir, 1 3/4"
Frames	Mahogany, 1-1/16" x 4"
Side and forward deck	Marine fir plywood, 5 ply, 1/2", fiberglass overlay
Inner keel	Air dried fir, 1 3/4" x 5 1/2"
Inner chines	Oak
Stem	Mahogany, 2 1/4" x 4"
Longitudinal stringers	4, vertical grain fir, air dried, 1 3/4"
Fuel capacity	One tank, 120 gallons
Fresh water capacity	40 gallons
Deck and interior hardware	Cast bronze, chrome plated
Underwater fittings	Manganese bronze
Shafts	Tru-Shaft, 1"
Propellers	14 x 9, Ni-bral, super cup
Water tight bulkhead	One
Standard power	Twin 220 hp Gray Marine, direct drive
Approximate shipping weight	8,750 pounds
Weight, fully loaded	10,900 pounds

CONOLIFT hull, modified deep-V.

BRONZE FASTENINGS USED THROUGHOUT

vered glass window in cabin bulkhead, International navigation lights, Electric horn, Electric windshield wiper, Two dry chemical fire extinguishers, One 5 1/2 lb. propane tank, Molded fiberglass cabin top, Cabin top handrails, chrome plated, Water tight cockpit with transom drains, Vinyl matting, non-skid type, cemented to cockpit deck, All cockpit hatches bound with metal trim, Turquoise boot top and gunwale trim, Chrome plated bow ring, Mahogany door to cabin with lock, 40 gallon fresh water tank, deck filled and vented, Pressure hot and cold water system, Molded plastic ice box, (electric refrigeration optional), Formica galley ledge, stainless steel sink, Three burner propane range, with oven, Formica cover over range, Glass rack, 110 volt shore power connection, 4 convenience outlets with polarity indicator, Pastry board, Combination dinette and bunk, Formica table top in dinette, Dinette cushions of polyfoam, Five molded plastic drawers under dinette, Enclosed forward stateroom with full headroom, Headliner over forward bunk area, Side panels over V-bunk area, Forward V-bunks, polyfoam mattresses, with filler pad, Hanging clothes locker, Eight dome lights in cabin, Carpet on cabin floor, Sliding window drapes, canvas windshield cover, All interior fabrics, upholstery, drapes and carpet color co-ordinated, Interior mahogany, semi-gloss varnish, in mahogany color, Fully enclosed head, Vinyl tile in front of galley and in head, Molded fiberglass ledge and wash basin in head, Marine toilet, with shut-off valve, Mirror in head, Bracket light in head, Chrome toilet fixtures, Choice of two color combinations in upholstery, Paint touch-up kit with instructions.

SEE YOUR DEALER FOR LIST OF OPTIONAL EQUIPMENT



38' MARINER

For those who wish everything in a boat, who like to breathe deep and live upon the sea.

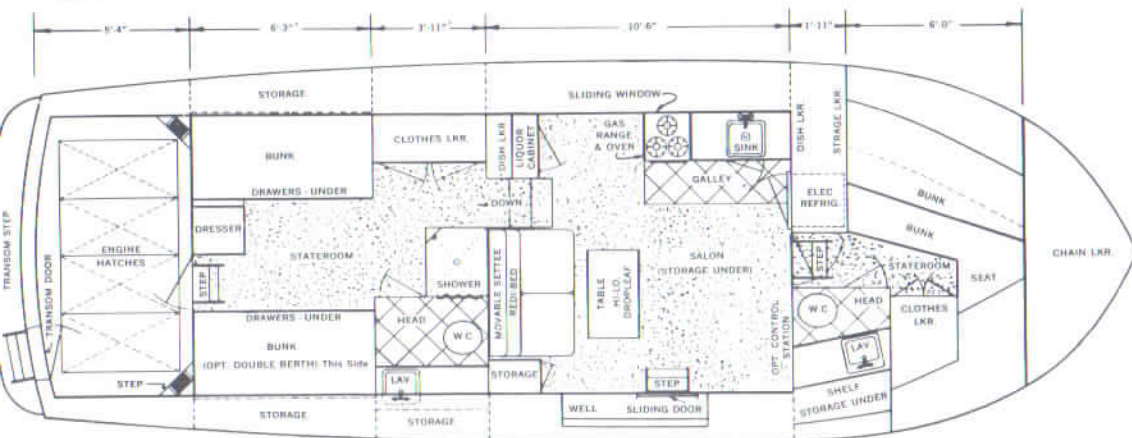
Here is a boat that is many boats... a unique cabin cruiser that combines every feature wanted by boaters... a boat that is all things for those who wish a home-upon-the-sea! The richness of mahogany panelling... stunning interior decor, with colors and materials personally selected and coordinated throughout... two truly luxurious private staterooms... a beautiful and spacious main salon for delightful entertaining and relaxation... a tiled galley complete with hot and cold water, water pressure system, electric refrigerator, three-burner range and oven... two tiled heads, one with shower... and a full hold for tremendous storage! Optional dual controls let you enjoy fair weather or foul... with fresh water and fuel for up to 400 miles of pleasure cruising. Top-side of the molded fiberglass cabin and deck structure is a fisherman's delight... a sun-drenched haven for the loafer... while the amazing CONOLIFT hull, with its strong fiberglass overlay, maintains a smooth, level ride in all water even at high speed.

For specifications see reverse side





TOLLYCRAFT 38' MARINER



STANDARD EQUIPMENT Twin 220 hp Gray Marine motors, 1.77 to 1 reduction Crusader V-drive, Borg-Warner reverse gears, 35 amp alternator on each motor, Down-draft carburation, fuel filter, oil filter, Special copper exhaust system with San Juan mufflers, Single lever clutch and throttle controls on single control model, Individual clutch and throttle controls for dual installations, Complete motor instrument panel gauges, with lights including engine hour meter, Heavy duty rack and pinion push-pull cable steering, Molded fiberglass control console on command bridge, Individually fused electric circuits, color coded, 12 volt and 110 volt, Chrome navy type ship's wheel, ship's bell, Two vapor proof battery switches, Four heavy duty 12 volt batteries with plastic covers, Bilge blower, Sound insulated motor compartment, Ten hull side vents to bilge, Two 135 gallon fuel tanks, galvanized, Electric fuel gauges, Complete electrical grounding copper strap, All under-water fittings, manganese bronze, Tru-shaft, bronze propeller shaft, 1 1/4", Marine rubber bearings, Zinc electrolysis plate, transom mounted, 72 sq. in., Motor compartment light, Ni-bral propellers, Steps from command bridge to aft deck and to cockpit steps, Mahogany transom boarding platform with door through transom from aft cockpit, Folding mast with yardarm and jack staff, Wide walk-around side decks, Stainless steel and chrome safety rails on command bridge, Cast bronze deck hardware chrome plated, Molded fiberglass forward deck hatch, with adjuster and lock plus light in hatch, Four 5" x 12" cast aluminum port lights with screens, Aluminum trim around window opening, International navigation lights, Three dry chemical fire extinguishers, Two electric bilge pumps, Electric air horn, Weather stripped aft hatch from stateroom to cockpit, One 5 1/2 lb. propane tank mounted on command bridge, Fiberglass aft cabin and forward trunk cabin molded in one piece with decks, Large command bridge pilot seat with

SPECIFICATIONS

Center-line length	38' 3"
Over-all length	39' 2"
Draft	2' 9"
Beam	13' 2"
Freeboard, forward and aft	70" and 54"
Cabin headroom	6' 2"
Bottom planking	Marine fir plywood, 5/8", 7 ply, fiberglass overlay
Side planking	Marine fir plywood, 5/8", 7 ply, fiberglass overlay
Engine stringers	Fir, 1 3/4" molded to bottom
Frames	Mahogany, 1 1/8" x 4"
Side, forward and aft decks	One piece molded fiberglass
Inner chines	Oak, 1 1/4" x 2 1/2"
Inner keel	Fir, 1 3/4" x 5"
Outer keel	Fir, 2 1/2" x 4"
Stem	African mahogany, 2 3/4" x 5"
Longitudinal stringers	Fir, 1 3/4", full length
Fuel capacity	270 gallons in two tanks
Fresh water capacity	140 gallons, one tank
Deck and interior hardware	Bronze, chrome plated
Underwater fittings	Manganese bronze
Shafts	Tru-Shaft, 1 1/4"
Propeller	Ni-bral, 3 blade, 18 x 16
Standard power	220 hp Twin Gray Marine, 1.77 to 1 reduction with Crusader V-drives
Water tight bulkheads	Two
Approximate shipping weight	14,000 pounds
CONOLIFT hull, modified deep-V.	
BRONZE FASTENINGS USED THROUGHOUT	

storage under, Sliding side door in deck well and sliding sash over galley, Tollycraft pennant, Enclosed forepeak chain locker, Vinyl headliner throughout cabins, Vinyl tile and wall covering in head, Fiberglass molded shower stall, Electric shower drain pump, 140 gallon fresh water tank, stainless steel, 8 gallon hot water tank with 110 volt heating element, Flared bow planking of red cedar, double fiberglass overlay, Door between aft stateroom and salon. Hull sides, bottom and transom fiberglass overlay, Sliding side window, stainless steel channel, with glass stops, locks and drains, Turquoise boot top, Pressure hot and cold water system, Electric 12 volt and 110 volt refrigeration, molded interior, Formica galley ledge, stainless steel sink with swing faucet, Formica cover for range top, Three burner propane stove with oven, Dish locker, 110 volt shore power connection, 5 convenience outlets and polarity indicator, Pastry board, Plastic drawers in galley and staterooms, Combination hi-lo coffee and dining table, Redi-bed in salon (makes into double bed), Forward stateroom with upper and lower bunk, Enclosed head with formica ledge and vitrous china lavatory, Clothes and storage lockers, Two marine toilets by Raritan with shut-off valves, Polyfoam mattresses on forward bunks, Combination box and polyfoam mattresses and spring in owner's stateroom, Built-in dresser with mirror in owner's stateroom, Dome and bracket lights throughout cabins, Hanging locker, 3' 10", in aft stateroom, Sliding drapes throughout, Canvas cover for forward cabin windshield, Color co-ordinated interior by famous interior decorator, Enclosed aft head with shower, Formica vitrous china lavatory in aft head, Mirrors in heads, sliding shower curtain, Bunk spreads, Toilet fixtures, towel and glass racks, Interior in semi-gloss light mahogany finish, Fully carpeted, Canvas cover for command bridge and seat, Molded fiberglass forward deck hatch with light, Paint touch-up kit with instructions.

SEE YOUR DEALER FOR LIST OF OPTIONAL EQUIPMENT



50' DISCOVERER *For those who seek the finest and enjoy the elegant way of life afloat.*

Tollycraft 50' Discoverer at the Seattle Yacht Club, Seattle, Washington.

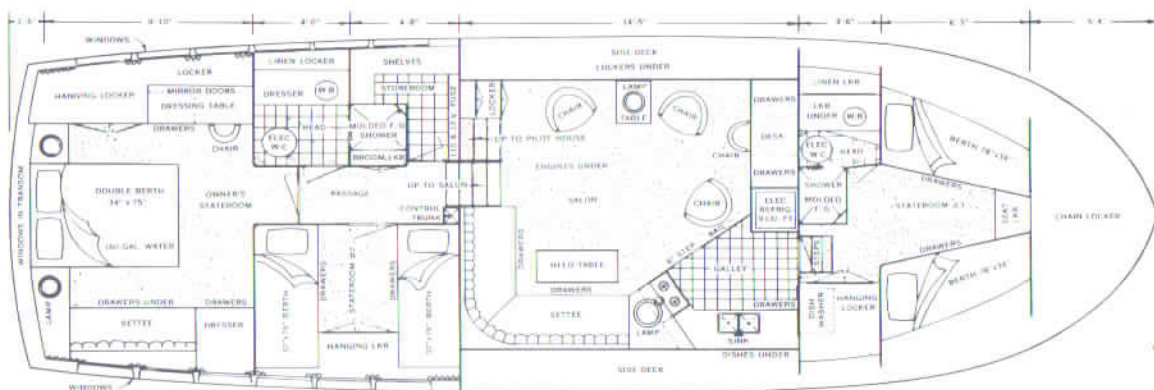
The world of discovery begins with your first glimpse of this superb, sea-going cruiser... the bold, clean sweep of the hull... wide side-decks... gleaming chrome fittings... a warm glow of mahogany... the completely instrumented, comfortable pilot house, including a built-in bar with glass and bottle racks, optional ice maker and running water! Dream of a floating palace... then discover reality in the beautifully paneled main salon with its rich mahogany panelling, deep pile nylon carpets, French-tinted draperies and distinctive fabrics all fashion coordinated to suit your personal tastes. Discover the three luxuriously comfortable private staterooms, with dressers,

tables, night stands, roomy hanging lockers and large mirrors... two tiled heads, finely appointed with china wash basins, large mirrors, electric marine toilets and fiberglass shower stalls. Watch *her* face as she discovers a dream galley—electric refrigeration, formica counter tops, stainless steel dual sinks, 3-burner electric range with oven, automatic dishwasher, optional deep freeze, tiled deck, fan, pastry board, plastic storage drawers, pressure hot and cold water throughout. After the wonderful discovery of this magnificent boat... there lies before you a whole world of discovery... smooth cruising... trouble-free pleasure... for a lifetime!

For specifications see reverse side



TOLLYCRAFT 50' DISCOVERER



SPECIFICATIONS

Center-line length	49' 3"
Overall length	51' 0"
Draft	3' 5"
Beam	15' 8"
Freeboard forward and aft	6' 10" and 5' 10"
Bottom planking	Two 1/2" 7 ply plywood, fiberglass overlay
Side planking	5/8" 7 ply plywood, fiberglass overlay
Longitudinal motor stringers	2 5/8" x 40' molded to bottom planking
Sawn frames	1 3/8" x 4" mahogany
Decks	1/2" plywood, fiberglass overlay, painted non-skid
Inner keel	4" x 6" vertical grain fir, full length
Outer keel	4" x 10", full length
Chines	1 5/8" x 3 1/2" oak
Fuel capacity	400 gallons, in two tanks
Water capacity	160 gallons, one stainless steel tank
Shafts	1 3/4" Tru-shaft
Propellers	Four blade, 24 x 20
Water-tight bulkheads	Two
Standard power	Twin 280 hp Gray Marine V-8, 3 to 1 reduction
Approximate shipping weight	28,500
Weight fully loaded (estimated)	36,500

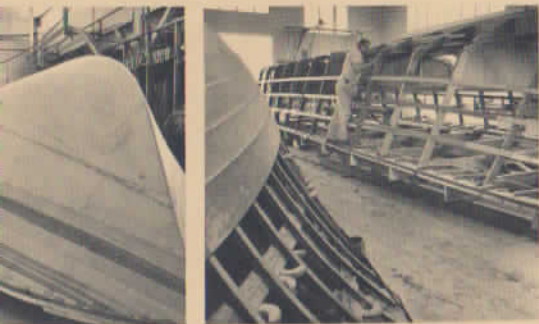
CONOLIFT hull, modified deep-V.

BRONZE FASTENINGS USED THROUGHOUT

STANDARD EQUIPMENT Twin 280 hp Gray Marine Motors, 3 to 1 reduction, adjustable rubber mounts, Hydraulic reverse gears, 35 amp alternator on each motor, Down-draft carburation, four barrels, automatic choke, Copper exhaust system, water cooled collector rizers, Mufflers, Morse single lever clutch and throttle controls, Complete motor instrument panel gauges, with lights, Smith Urban safety monitor system, Model 404, Morse heavy duty rack and pinion cable steering, Molded fiberglass control console, Individually fused 12 and 110 volt electric circuits, color coded, Chrome spoked ship's wheel with outer rim, Ship's bell, Two vapor proof master battery switches, Four 205 amp hour 12 volt batteries, Three bilge pumps, manual, electric, Bilge blower, Sound insulated motor room, 1 1/2" foam, Motors ventilated through hull vents, Vinyl matting in motor compartment, Motor compartment painted, Motor compartment lights, 400 gallons fuel in two tanks, Complete electrical grounding strip, inside full, Zinc electrolysis plate, transom mounted, All under water fittings of manganese bronze, 10 hull side ventilators, Chrome handrails on cabin top and hardtop, 1 3/4" Tru-shaft propeller shafts, Three 1 3/4" B-J rubber bearings on each propeller shaft, Four blade propellers, Ni-bral, Center sash of bridge windshield opens, with adjusters, 1/4" plate glass throughout, Pilot house seat, locker and bar, with hot and cold water, glass and bottle racks, Transom seat and back, with cushions, storage under, 24' Transom step with boarding ladder, Stern flag pole, 21" walk-around side decks, Cast bronze deck hardware, chrome plated, Forward and aft deck hatches, Side, aft and forward decks of 1/2" plywood, fiberglass covered, painted non-skid, Six 7" x 18" aluminum port lights with screens, Sixteen 12" x 30" ports in aft cabin, Pulpit and life lines, stainless steel, chrome fittings, Inter-

national running lights, Alumilited trim molding, Three electric windshield wipers, 5" spherical compass, Four 2 1/2 lb. dry chemical fire extinguishers, Cabin top and hard top, molded fiberglass, Forward seat locker, molded fiberglass, with vinyl cushions, Pilot house enclosed three sides, with drop curtain (folding doors as option), 110 volt shore power, ten convenience outlets, polarity indicator, Enclosed chain locker in forepeak, with light, One inch fiberglass insulation at cabin and deck overhead, vinyl headliner, Two molded fiberglass shower stalls, Vinyl tile on deck of heads, galley and storeroom, Automatic shower drain pump, 160 gallon stainless steel water tank, Pressure hot and cold water system, 20 gallon hot water tank, electric, heated off one motor, Three private staterooms, hanging lockers, storage and drawer space in each, Electric refrigeration, 12 and 110 volt, Formica galley ledge, Stainless steel dual sinks, 3 burner electric range with oven, 6 1/2 KW Kohler, automatic start, generator, Electric heat throughout, Galley exhaust fan, Built-in dish locker, Pastry board, Automatic dishwasher in galley, Plastic storage drawers throughout, Decor in carpets, drapes and spreads to owner's choice, Hi-low dining and coffee table, Double bed, springs and mattresses, aft stateroom, Pin-core latex 5" mattress in guest staterooms, Built-in dressing table, night stand, dresser and large hanging locker in aft stateroom, Large mirror in each stateroom and in both heads, Electric marine toilets, Formica dresser tops, china wash basin, each head, Settee and desk in salon, color and fabric to owner's choice, Lights over each berth, Interior mahogany, semi-gloss varnish, hand rubbed, Turquoise boot top, Hull and cabin top color or colors to owner's choice. Exterior painted in white.

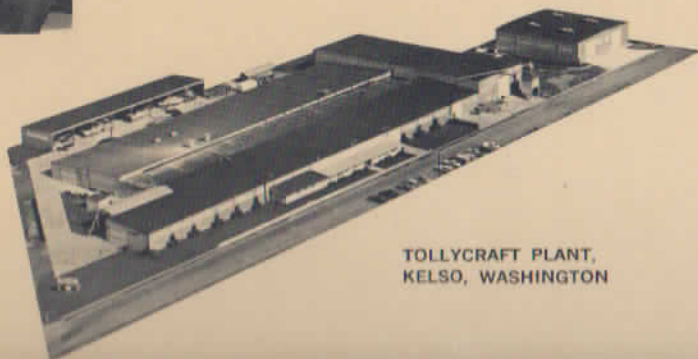
SEE YOUR DEALER FOR LIST OF OPTIONAL EQUIPMENT



boats perform better because they are constructed better. Tollycraft gives you six coats of varnish... the beautiful beauty of finish... stays beautiful because of the five fiberglass overlay seals out moisture. Care is shown in the vinyl deck matting... motor compartment matting and insulation... individually fused and shielded electrical circuits... single lever clutch and control... hydraulic gears... chrome plated deck... and many, many extra features that are standard equipment only on a Tollycraft!



Tollycraft Corporation president R. M. (Tolly) Tollefson, left, and renowned marine architect Ed Monk.



TOLLYCRAFT PLANT,
KELSO, WASHINGTON



In your Tollycraft galley you have the ultimate in convenience! Molded fiberglass or formica counter tops... plastic storage drawers with rounded corners that are easy to clean, slide effortlessly... glass racks... dish racks... the exclusive Tollycraft pastry board... one-burner, two-burner and three-burner ranges with ovens that make cooking a pleasure... molded fiberglass ice box or electric refrigeration... hot and cold water... pressure water systems... roomy aisles that give elbow room without bumping... tiled deck... attractive dinettes with comfortable seating. You'll find no galley slaves aboard a Tollycraft!

So many other features show you the planning and care from the woman's point of view that goes into your Tollycraft... good ventilation... no musty odors because a Tollycraft, with its fiberglass overlay and extra dry-rot protection, keeps dampness out... complete utilization of storage space with many more drawers and hanging lockers — take a walk through and count them! And Tollycraft's single lever control and complete instrumentation lets any woman handle the biggest cruiser with ease and confidence!



Naturally, not all these luxuries are found on every boat — although you'll find as many as can be packed aboard. You will also find on every boat the same minute attention to detail and superb convenience that make every moment of a woman's life aboard a Tollycraft cruiser carefree and delightfully elegant!

